

MARKET SCREEN

6 September 2018

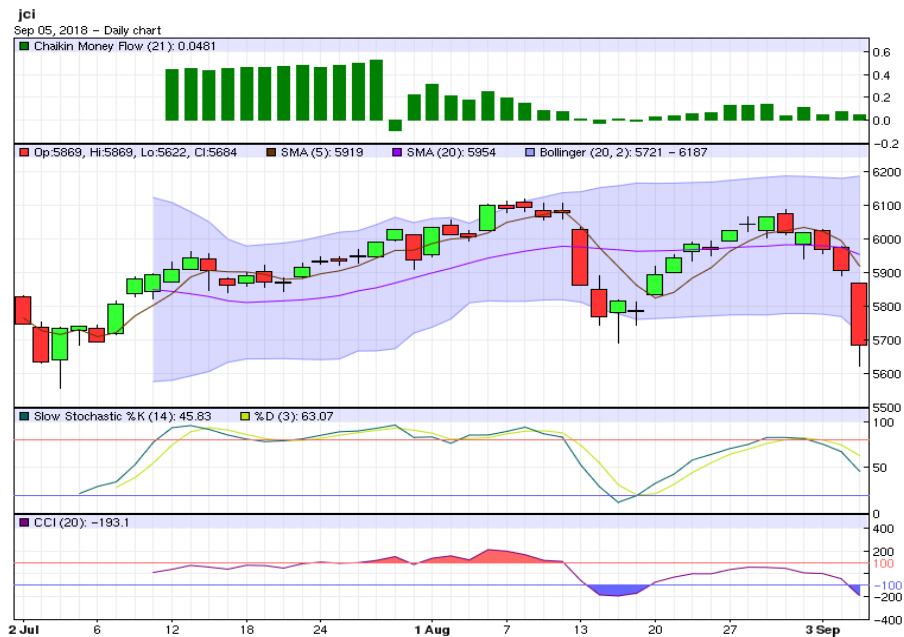
Periode Minor (1-5 hari) : Melemah
Periode Intraday : Menguat
Support-Resistance : 5,477.5 - 5,971.8

Saham yang layak dicermati

JSMR, RAJA, TBIG, MEDC, PTBA, ANTM, AKRA, ASGR, MNCN, APLN, KJJA, BKSL, SMRA, TOTL

Perkembangan Terkini

- Aksi jual melanda bursa saham regional, yang membuat indeks saham Asia memerah diperdagangkan kemarin. IHSG sendiri terjerembab hingga 3,76 persen kelevel 5.683,50. Hal senada juga terjadi dipasar uang, dengan mayoritas nilai tukar negara Asia kompak melemah atas Dolar AS.
- Sementara itu, bursa AS ditutup bervariasi pada perdagangan lalu. Indeks saham Dow Jones (+0,09%) dan S&P 500 (-0,28%) masing-masing bergerak kelevel 25.974,99 dan 2.888,60. Tekanan jual saham-saham teknologi, menyebabkan indeks saham melemah. Perhatian investor terhadap negosiasi dagang AS-Kanada dan publikasi terbaru data ekspor-impor AS, turut memengaruhi arah dan laju pasar.
- Dari sisi ekonomi AS, nilai ekspor dan impor dibulan Juli masing-masing mencapai US\$211,1 miliar dan US\$ 261,2 miliar, yang membawa defisit perdagangan luar negeri meningkat menjadi US\$ 50,1 miliar. Defisit Juli menjadi yang tertinggi dalam 5 bulan terakhir, menyusul impor yang naik kencang dan ekspor yang menurun. Sepanjang periode Januari-Juli 2018, defisit perdagangan luar negeri AS telah meningkat 7,0% yoy, menjadi US\$ 22,0 miliar. Defisit perdagangan dibulan Juli dengan Tiongkok dan Uni Eropa meningkat masing-masing menjadi US\$ 34,1 miliar dan US\$ 14,5 miliar.
- Mayoritas bursa Asia pagi ini dibuka melemah. Harga minyak Brent (WTI) turun kelevel US\$ 77,00 (US\$ 68,50) perbarell, dan harga emas menguat kelevel US\$ 11.204,90/troy ounce.



Pola Indikator Teknikal

- Aaron Down naik diatas Aaron Up, sementara indikator ADX memperlihatkan sinyal indeks bergerak trading melemah.
- Chaikin Volatility dan trend Bollinger Bands Width naik. Volatilitas pasar melonjak dan rentang pergerakan harga mulai melebar.
- Indikator CCI dan Williams%R turun masuk area jenuh jual, sebagai indikasi potensi indeks melemah dalam jangka pendek.
- Slow Stochastic %K bergerak dibawah indikator pemicunya, %D menuju area jenuh beli, yang menunjukkan potensi indeks melemah dalam jangka pendek.
- Indikator Chaikin Money Flow diatas nol, dengan dominasi tekanan beli kategori lemah.
- Artinya secara teknikal, diperiode menengah (1-5 hari kedepan) pasar diprediksi **melemah**. Sedangkan untuk hari ini, indeks diperkirakan bergerak **menguat**.

Seleksi Saham, 6 September 2018

Panduan Penggunaan

- ✓ Tabel ini berguna untuk menyeleksi saham-saham yang menarik untuk diperdagangkan hari ini, berdasarkan sinyal dari sejumlah indikator teknikal seperti Fast Stochastic, Slow Stochastic, RSI, dan StochRSI.
- ✓ Fokuskan analisis Anda pada saham-saham yang memberikan sinyal sama dan terbanyak, baik (B) atau (S). Perhatikan juga saham-saham dengan indikator utama Fast Stochastic (FS), Slow Stochastic (SS) yang menunjukkan sinyal (B) atau (S) secara bersamaan.
- ✓ Sebelum melakukan aksi beli atau jual, Anda wajib melakukan analisis teknikal untuk saham yang sudah dipilih sebelumnya. Meskipun indikator teknikal suatu saham memberikan banyak sinyal beli (B), bukan berarti posisi beli atau potensi kenaikan yang mutlak terjadi. Anda tetap diwajibkan menganalisis kondisi dan timing pergerakan saham tersebut, dengan analisis teknikal.
- ✓ Rentang pergerakan harga *support resistance* harian ini dihitung dengan menggunakan metode pivot point dan data input harian.
- ✓ Informasi ini juga bisa Anda dapatkan di website dmia.danareksaonline.com.

	Kode	Aneka Industri	MACD	FS	SS	RSI	StochRSI	CCI	S2	S1	R1	R2
1	ASII	ASTRA INTERNATIONAL Tbk	S	S	S	S	S	S	6,592	6,683	6,908	7,042
2	AUTO	ASTRA OTOPARTS Tbk	S		S	S	S	S	1,297	1,338	1,413	1,447
3	GJTL	GAJAH TUNGGAL Tbk	S	S	S	S	S	S	570	580	610	630
4	MYRX	HANSON INTERNATIONAL Tbk	B	S	S	S	S	S	124	127	131	132
5	IMAS	INDOMOBIL SUKSES INTERNASIONAL Tbk	S	B	B	S	S	S	1,382	1,523	1,833	2,002
6	INDS	INDOSPRING Tbk	S	S	S	S	S	S	1,657	1,753	1,993	2,137
7	KBLI	KMI Wire and Cable Tbk	S	B	S	S	S	S	235	247	273	287
8	MASA	MULTISTRADA ARAH SARANA TBK	S	S		S	S	S	301	307	315	317
9	PBRX	PAN BROTHERS Tbk	S	B	B	B	B	B	493	512	552	573
10	ADMG	POLYCHEM INDONESIA Tbk	S	S	S	S	S	S	282	302	346	370
12	RICY	RICKY PUTRA GLOBALINDO Tbk	S		S	S	S	B	157	163	171	173
13	SMSM	SELAMAT SEMPURNA Tbk	B	S	S	S	S	S	1,283	1,312	1,362	1,383

	Kode	Industri Barang Konsumsi	MACD	FS	SS	RSI	StochRSI	CCI	S2	S1	R1	R2
1	ADES	AKASHA WIRA INTERNATIONAL Tbk	S		B	S	S	S	892	898	918	932
3	GGRM	GUDANG GARAM Tbk	S		S	S	S	S	68,125	69,425	72,550	74,375
4	HMSP	HANJAYA MANDALA SAMPOERNA Tbk	B			S	S	S	3,517	3,583	3,753	3,857
5	ICBP	INDOFOOD CBP SUKSES MAKMUR Tbk	S		S	S	S	S	8,150	8,275	8,575	8,750
6	INDF	INDOFOOD SUKSES MAKMUR Tbk		S		S	S	S	5,717	5,833	6,183	6,417
7	KLBF	KALBE FARMA Tbk		S	S	S	S	S	1,150	1,180	1,250	1,290
8	KDSI	KEDAWUNG SETIA INDUSTRIAL Tbk	S		B	S	S	S	800	820	880	920
9	KAEF	KIMIA FARMA (PERSERO) Tbk	S	B	S	S	S	S	1,853	1,997	2,297	2,453
10	MYOR	MAYORA INDAH Tbk	S			S	S	S	2,640	2,710	2,850	2,920
11	ROTI	NIPPON INDOSARI CORPINDO Tbk	B	S		S	S	S	930	940	955	960
13	TSPC	TEMPO SCAN PACIFIC Tbk		S	S	S	S	S	1,430	1,440	1,470	1,490
15	ULTJ	ULTRAJAYA MILK IND AND TRDG CO	B	S	S	S	S	S	1,150	1,175	1,225	1,250
16	UNVR	UNILEVER INDONESIA Tbk	B		S	S	S	S	39,233	40,417	43,367	45,133

	Kode	Industri Kimia	MACD	FS	SS	RSI	StochRSI	CCI	S2	S1	R1	R2
4	ALMI	ALUMINDO LIGHT METAL INDUSTRY Tbk	S	S	S	S	S	S	273	289	331	357
2	ARNA	ARWANA CITRAMULIA Tbk	S	S	S	S	S	S	327	335	351	359
5	BTON	BETONJAYA MANUNGGAL Tbk	S	B	S	S	S	S	203	219	255	275
6	BUDI	BUDI STARCH AND SWEETENER Tbk		S	S	S	S	S	98	100	106	110
7	IGAR	CHAMPION PACIFIC INDONESIA Tbk	S		B	S	S	S	380	380	380	380
8	TPJA	CHANDRA ASRI PETROCHEMICAL Tbk	B	S	S	S	S	S	4,750	4,850	5,100	5,250
9	CPIN	CHAROEN POKPHAND INDONESIA Tbk	S	S	S	S	S	S	4,270	4,430	4,840	5,090
10	EKAD	EKADHARMA INTERNATIONAL Tbk	S		B	S	S	S	683	702	737	753
11	ETWA	ETERINDO WAHANATAMA Tbk	S			S	S	S	79	80	84	87
12	GDST	GUNAWAN DIANJAYA STEEL Tbk		S	S	S	S	S	114	130	166	186
13	SMCB	HOLCIM INDONESIA Tbk		S	S	S	S	S	802	853	953	1,002
14	INKP	INDAH KIAT PULP AND PAPER Tbk	S	S	S	S	S	S	16,550	17,100	18,400	19,150
16	INTP	INDOCEMENT TUNGGAL PRAKARSA Tbk	B	S	S	S	S	S	15,108	15,717	16,717	17,108
17	IPOL	INDOPOLY SWAKARSA INDUSTRY Tbk	S	S	S	S	S	S	89	91	98	103
18	JPFA	JAPFA COMFEED INDONESIA Tbk	S	S		S	S	S	1,767	1,893	2,158	2,297
19	JPRS	JAYA PARI STEEL Tbk	B		B	S	S	S	230	230	230	230
20	MAIN	MALINDO FEEDMILL Tbk	S			S	S	S	965	1,085	1,290	1,375
21	TKIM	PABRIK KERTAS TJIWI KIMIA Tbk	S	S	S	S	S	S	11,167	12,083	13,908	14,817
22	SMGR	SEMEN INDONESIA (PERSERO) Tbk	B	S		S	S	S	8,100	8,475	9,250	9,650

No	Kode	Industri Keuangan	MACD	FS	SS	RSI	StochRSI	CCI	S2	S1	R1	R2
1	ADMF	ADIRA DINAMIKA MULTI FINANCE Tbk	S		S	S	S	S	7,858	7,992	8,267	8,408
3	INPC	BANK ARTHA GRAHA INTERNASIONAL Tbk	B		S	S	S	S	70	71	73	74
4	BBKP	BANK BUKOPIN Tbk		S		S	S	S	351	361	385	399
5	BBCA	BANK CENTRAL ASIA Tbk		S	S	S	S	S	23,200	23,600	24,450	24,900
6	BNGA	BANK CIMB NIAGA Tbk	S		S	S	S	S	837	858	908	937
7	BDMN	BANK DANAMON INDONESIA Tbk	S	S	S	S	S	S	6,433	6,542	6,792	6,933
8	BNII	BANK INTERNASIONAL INDONESIA Tbk			S	S	S	S	197	201	207	209
9	BJBR	BANK JABAR BANTEN Tbk		S	S	S	S	S	1,733	1,767	1,862	1,923
10	BMRI	BANK MANDIRI (PERSERO) Tbk	S	S	S	S	S	S	6,025	6,175	6,500	6,675
11	BBNI	BANK NEGARA INDONESIA Tbk		S		S	S	S	6,758	6,917	7,317	7,558
12	PNBN	BANK PAN INDONESIA Tbk	B	S	S	S	S	S	810	835	880	900
13	BNLI	BANK PERMATA Tbk	S		S	S	S	S	455	463	483	495
14	BBRI	BANK RAKYAT INDONESIA (PERSERO) Tbk	S	S	S	S	S	S	2,797	2,863	3,033	3,137
15	AGRO	BANK RAKYAT INDONESIA AGRONIAGA Tbk		S		S	S	S	325	339	369	385

No	Kode	Industri Keuangan	MACD	FS	SS	RSI	StochRSI	CCI	S2	S1	R1	R2
2	BBTN	BANK TABUNGAN NEGARA (PERSERO) Tbk		S	S	S	S	S	2,320	2,400	2,570	2,660
3	BTPN	BANK TABUNGAN PENSIUNAN NASIONAL Tbk	S	S	S	S	S	S	3,753	3,817	3,977	4,073
4	BVIC	BANK VICTORIA INTERNATIONAL Tbk	S	S	S	S	S	S	190	192	198	202
5	BFIN	BFI FINANCE INDONESIA Tbk		S	S	S	S	S	560	590	660	700
6	CFIN	CLIPAN FINANCE INDONESIA Tbk	S		BB	S	S	S	241	245	257	265
7	KREN	KRESNA GRAHA SEKURINDO Tbk		S		S	S	S	663	682	737	773
8	MFIN	MANDALA MULTIFINANCE Tbk	S	BB	BB	S	S	S	758	787	842	868
10	PNLF	PANIN FINANCIAL Tbk	B	S	S	S	S	S	192	198	210	216
11	PANS	PANIN SEKURITAS Tbk	S		B	S	B	B	1,428	1,492	1,627	1,698
12	PNIN	PANINVEST Tbk	S			S	S	S	850	875	950	1,000
13	TRIM	TRIMEGAH SECURITIES Tbk		B	S	S	S	S	107	110	115	117
14	VRNA	VERENA MULTI FINANCE Tbk	S	S	S	B	S	B	104	106	110	112
15	WOMF	WAHANA OTTOMITRA MULTIARTHA Tbk	S	S	S	S	S	S	266	276	298	310

No	Kode	Infrastruktur	MACD	FS	SS	RSI	StochRSI	CCI	S2	S1	R1	R2
1	CMNP	CITRA MARGA NUSAPHALA PERSADA Tbk	S	B	S	S	S	S	1,258	1,282	1,317	1,328
2	JSMR	JASA MARGA (PERSERO) Tbk	S		B	S	S	S	4,040	4,170	4,460	4,620
3	WEHA	PANORAMA TRANSPORTASI Tbk	B			S	S	S	142	144	146	146
4	TMAS	PELAYARAN TEMPURAN EMAS Tbk	B	B	B	S	S	S	750	775	830	860
5	PGAS	PERUSAHAAN GAS NEGARA (PERSERO)		S	S	S	S	S	1,762	1,823	1,963	2,042
6	RAJA	RUKUN RAHARJA Tbk	S	B	B	S	S	S	447	474	521	541
7	TLKM	TELEKOMUNIKASI INDONESIA Tbk	B	S	S	S	S	S	3,157	3,213	3,363	3,457
8	TBIG	TOWER BERSAMA INFRASTRUCTURE Tbk	S	B	B	B	S	B	5,350	5,500	5,725	5,800
9	TRAM	TRADA MARITIME Tbk	B	S	S	S	S	S	189	197	216	227
10	WINS	WINTERMAR OFFSHORE MARINE Tbk	S	B	S	S	S	S	263	265	267	267
11	EXCL	XL Axiata Tbk	S	S	S	S	S	S	2,667	2,733	2,883	2,967

No	Kode	Pertambangan	MACD	FS	SS	RSI	StochRSI	CCI	S2	S1	R1	R2
1	ADRO	ADARO ENERGY Tbk	S	S	S	S	S	S	1,630	1,665	1,770	1,840
2	ANTM	ANEKA TAMBANG Tbk	S	B	S	S	S	S	732	753	798	822
3	CTTH	CITATAH Tbk	B	S	S	S	S	S	79	82	87	89
4	ENRG	ENERGI MEGA PERSADA Tbk	S	S	S	S	S	S	105	110	125	135
6	HRUM	HARUM ENERGY Tbk	S	S	S	S	S	S	2,203	2,267	2,407	2,483
7	ITMG	INDO TAMBANGRAYA MEGAH Tbk		S	S	S	S	S	25,350	25,625	26,350	26,800
8	MEDC	MEDCO ENERGI INTERNASIONAL Tbk	S	B	B	S	S	S	667	713	813	867
9	MITI	MITRA INVESTINDO Tbk		S	S	S	S	S	59	64	76	83
12	KKGI	RESOURCE ALAM INDONESIA Tbk	B	S	S	S	S	S	329	341	359	365
13	PTBA	TAMBANG BATUBARA BUKIT ASAM (PERSE)	S	B	S	S	S	S	3,563	3,677	3,947	4,103
14	TINS	TIMAH Tbk	S	S	S	S	S	S	688	707	752	778
15	INCO	VALE INDONESIA Tbk	S	S	S	S	S	S	2,990	3,090	3,360	3,530

No	Kode	Pertanian dan Perkebunan	MACD	FS	SS	RSI	StochRSI	CCI	S2	S1	R1	R2
1	AALI	ASTRA AGRO LESTARI Tbk	S	S		S	S	S	12,400	12,700	13,225	13,450
2	BISI	BISI INTERNATIONAL Tbk	B		B	S	S	S	1,290	1,350	1,440	1,470
3	BWPT	BW PLANTATION Tbk.	S	S	S	S	S	S	174	184	206	218
4	DSFI	DHARMA SAMUDERA FISHING INDUSTRIES		S	B	S	S	S	88	92	100	104
5	LSIP	PP LONDON SUMATRA INDONESIA Tbk	S	S	S	S	S	S	1,195	1,245	1,335	1,375
6	SGRO	SAMPOERNA AGRO Tbk	S	B		S	S	B	2,313	2,317	2,327	2,333
7	TBLA	TUNAS BARU LAMPUNG Tbk	B	S	S	S	S	S	915	1,005	1,160	1,225

No	Kode	Perdagangan dan Jasa	MACD	FS	SS	RSI	StochRSI	CCI	S2	S1	R1	R2
1	ACES	ACE HARDWARE INDONESIA Tbk	S			S	S	S	1,222	1,258	1,333	1,372
2	AKRA	AKR CORPORINDO Tbk	S	B	B	S	S	S	3,077	3,203	3,483	3,637
3	ASGR	ASTRA GRAPHIA Tbk	S	B	B	S	S	S	1,373	1,437	1,557	1,613
4	BUVA	BUKIT ULUWATU VILLA Tbk	S			S	S	S	257	259	265	269
5	CSAP	CATUR SENTOSA ADIPRANA Tbk	S		S	S	S	B	532	563	613	632
6	CLPI	COLORPAK INDONESIA Tbk	S	B	S	S	S	S	768	777	797	808
9	BMTR	GLOBAL MEDIACOM Tbk	B	S	S	S	S	S	374	386	414	430
10	HEXA	HEXINDO ADIPERKASA Tbk		S	S	S	S	S	2,957	3,073	3,303	3,417
12	JTPE	JASUINDO TIGA PERKASA Tbk	B	S	B	S	S	S	323	329	341	347
13	LTLS	LAUTAN LUAS Tbk	B		B	S	S	S	475	500	540	555

No	Kode	Perdagangan dan Jasa	MACD	FS	SS	RSI	StochRSI	CCI	S2	S1	R1	R2
1	MPPA	MATAHARI PUTRA PRIMA Tbk		B	S	S	S	S	163	170	187	197
2	MNCN	MEDIA NUSANTARA CITRA Tbk	S		B	S	S	S	800	840	900	920
3	MTDL	METRODATA ELECTRONICS Tbk		S	S	S	S	S	593	617	677	713
4	SDPC	MILLENNIUM P. INTERNATIONAL Tbk	S		S	B	S	B	96	98	100	100
5	MAPI	MITRA ADIPERKASA Tbk	S	S	S	S	S	S	712	738	803	842
6	MICE	MULTI INDOCITRA Tbk	S		B	S	S	S	356	366	396	416
8	PANR	PANORAMA SENTRAWISATA Tbk	B	S	S	S	S	S	400	406	422	432
9	RALS	RAMAYANA LESTARI SENTOSA Tbk			S	S	S	S	962	1,093	1,313	1,402
11	AMRT	SUMBER ALFARIA TRIDAYA Tbk	B	S		S	S	S	745	780	850	885
12	SCMA	SURYA CITRA MEDIA Tbk	B	S	S	S	S	S	1,763	1,837	1,997	2,083

No	Kode	Properti dan Real Estat	MACD	FS	SS	RSI	StochRSI	CCI	S2	S1	R1	R2
1	ADHI	ADHI KARYA (PERSERO) Tbk	S	S	S	S	S	S	1,302	1,338	1,438	1,502
2	APLN	AGUNG PODOMORO LAND Tbk		B	B	S	S	S	133	139	151	157
3	ASRI	ALAM SUTERA REALTY Tbk	S	S	S	S	S	S	268	278	306	324
4	BSDE	BUMI SERPONG DAMAI Tbk		S	S	S	S	S	1,023	1,062	1,157	1,213
5	CTRA	CIPUTRA DEVELOPMENT Tbk	S	B	S	S	S	S	690	720	795	840
8	COWL	COWELL DEVELOPMENT Tbk	B	S	S	S	S	S	588	602	632	648
9	DILD	INTILAND DEVELOPMENT Tbk	S		S	S	S	S	291	299	321	335
10	KDJA	KAWASAN INDUSTRI JABABEKA Tbk	S	B	B	S	S	S	199	203	211	215
11	LPCK	LIPPO CIKARANG Tbk	B		B	S	S	S	1,728	1,802	1,912	1,948
12	LPKR	LIPPO KARAWACI Tbk		S		S	S	S	301	313	347	369
14	MDLN	MODERNLAND REALTY Tbk				S	S	S	195	211	243	259
15	DGJK	NUSA KONSTRUKSI ENJINIRING Tbk	B			S	S	S	50	50	50	50
16	PWON	PAKUWON JATI Tbk	S		S	S	S	S	477	488	513	527
17	PTPP	PP (PERSERO) Tbk		S	S	S	S	S	1,535	1,600	1,765	1,865
18	BKSL	SENTUL CITY Tbk	S	B	S	S	S	S	96	101	111	116
19	SMRA	SUMMARECON AGUNG Tbk		B	S	S	S	S	572	593	633	652
20	SSIA	SURYA SEMESTA INTERNUSA Tbk	S	S		S	S	S	419	431	457	471
21	TOTL	TOTAL BANGUN PERSADA Tbk	S	B	S	S	S	S	573	587	612	623
22	WIKA	WIJAYA KARYA (PERSERO) Tbk	S		S	S	S	S	1,352	1,403	1,528	1,602

Keterangan: B: Buy, S: Sell,

Perhitungan level *support* dan *resistance* dilakukan menggunakan *pivot point*

FS : Fast Stochastic

SS : Slow Stochastic

RSI : Relative Strength Index

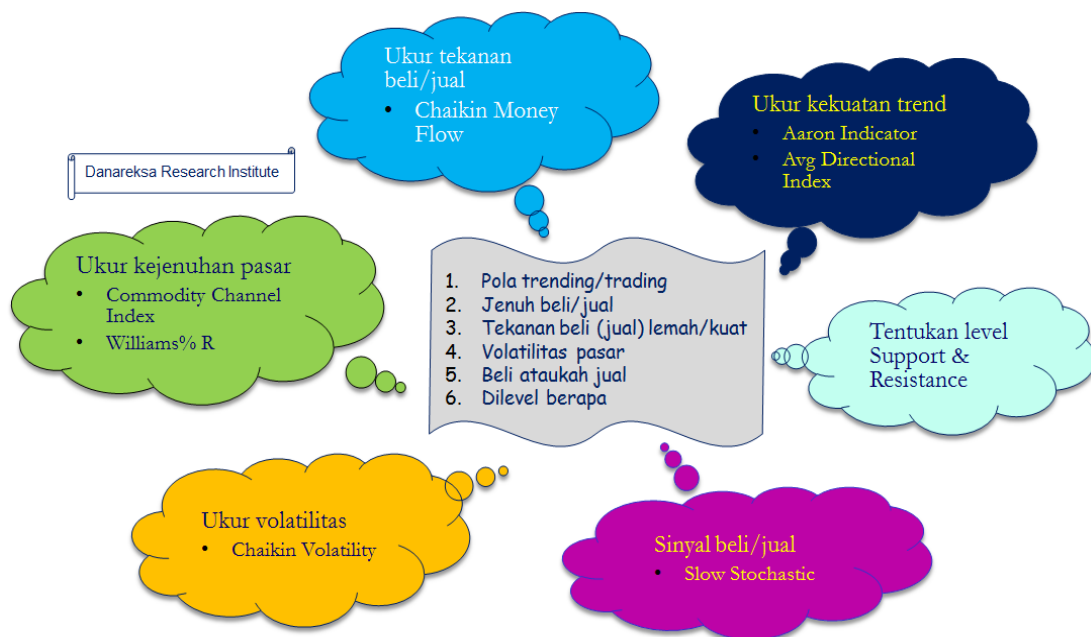
StochRSI : Stochastic RSI

CCI : Commodity Channel Index

S : Support

R : Resistance

Analisis Teknikal Lebih Cepat



Disclaimer:

The information contained in this report has been taken from sources which we deem reliable. However, none of Danareksa Research Institute and/or its affiliated companies and/or their respective employees and/or agents makes any representation or warranty (express or implied) or accepts any responsibility or liability as to, or in relation to, the accuracy or completeness of the information and opinions contained in this report or as to any information contained in this report or any other such information or opinions remaining unchanged after the issue hereof. We have no responsibility to update this report in respect of events and circumstances occurring after the date of this report. We expressly disclaim any responsibility or liability (express or implied) of Danareksa Research Institute and/or its affiliated companies and/or their respective employees and/or agents whatsoever and howsoever arising (including, without limitation for any claims, proceedings, actions, suits, losses, expenses, damages or costs) which may be brought against or suffered by any person as a result of acting in reliance upon the whole or any part of the contents of this report and neither Danareksa Research Institute and/or its affiliated companies and/or their respective employees and/or agents accepts liability for any errors, omissions or mis-statements, negligent or otherwise, in this report and any liability in respect of this report or any inaccuracy herein or omission herefrom which might otherwise arise is hereby expressly disclaimed.

Accordingly, none of Danareksa Research Institute and/or its affiliated companies and/or their respective employees and/or agents shall be liable for any direct, indirect or consequential loss or damage suffered by any person as a result of relying on any statement or omission in any information contained in this report. This report is prepared for general circulation. It does not have regard to the specific person who may receive this report.