

MARKET SCREEN

6 SEPTEMBER 2017

Periode Minor (1-5 hari) : Melemah

Periode Intraday : Melemah

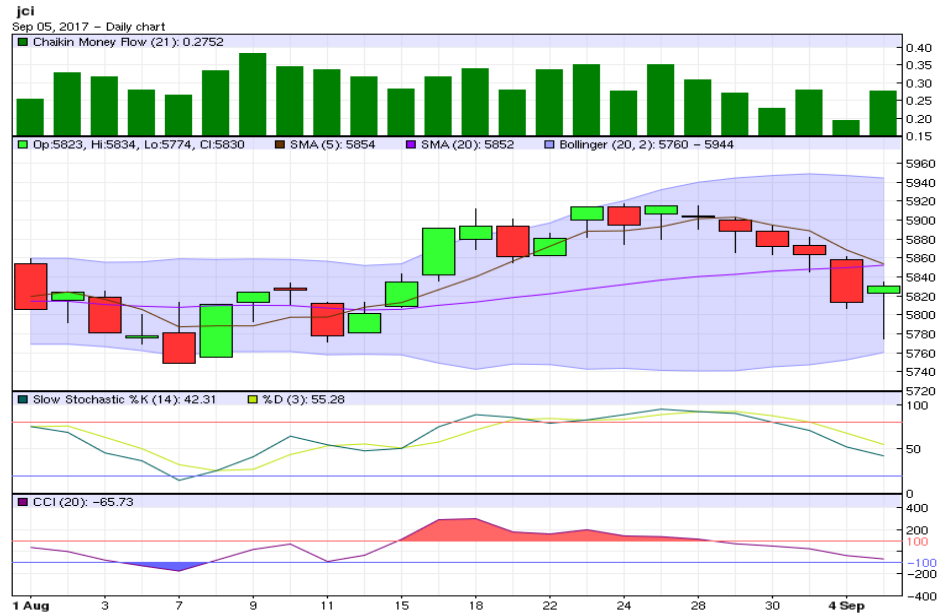
Support-Resistance : 5,752.9 - 5,872.7

Saham yang layak dicermati

ROTI, ULTJ, UNVR, INKP, BJBR, BMRI, BSIM, BBTN, TBIG, BWPT, BMTR, AKRA, ADHI, MDLN, PTPP, WIKA

Perkembangan Hari Ini

- ✓ Bursa Asia cenderung menguat ditengah tekanan geopolitik Semenanjung Korea. IHSG sendiri berhasil masuk zona positif dan naik 0,28 persen kelevel 5.829,98. Publikasi ekonomi terbaru datang dari Tiongkok. Indikator perkembangan sektor jasa-Caixin China General Services PMI bulan Agustus naik kelevel 52,7 dari level Juli, 51,5. Ekspansi aktivitas sektor jasa meningkat seiring tumbuhnya output dan order baru yang diterima bisnis.
- ✓ Sementara itu, bursa AS ditutup turun tajam pada perdagangan lalu. Indeks saham Dow Jones (-1,07%) dan S&P 500 (-0,75%) masing-masing bergerak kelevel 21.753,31 dan 2.457,85. Klaim kesuksesan tes bom hidrogen oleh Korea Utara memicu spekulasi ancaman serangan rudal balistik sejumlah negara tetangga. Naiknya potensi peperangan dikawasan Semenanjung Korea menjadi tekanan pergerakan pasar.
- ✓ Dari sisi ekonomi AS, pesanan yang diterima oleh pabrikan AS turun 3,3 persen mom dibulan Juli, setelah mampu meningkat 3,2 persen mom dibulan sebelumnya. Penurunan ini merupakan yang terbesar sejak Agustus 2014, meski sejalan dengan ekspektasi pasar. Turunnya order pabrikan terutama terjadi pada produk transportasi, kendaraan bermotor dan suku cadang, serta produk mesin.
- ✓ Mayoritas bursa Asia pagi ini dibuka melemah. Harga minyak Brent (WTI) turun kelevel US\$ 53,16 (US\$ 48,59) perbarell, dan harga emas menguat kelevel US\$ 1.346,50/troy ounce.



Pola Indikator Teknikal

- Aaron Down naik diatas Aaron Up, sementara indikator ADX memperlihatkan sinyal awal indeks bergerak trending melemah.
- Chaikin Volatility meningkat dan trend Bollinger Bands Width flat. Volatilitas pasar menguat dan rentang pergerakan harga melebar.
- Indikator CCI dan Williams%R keluar dari area jenuh beli, sebagai indikasi potensi indeks melemah dalam jangka pendek.
- Slow Stochastic %K memotong kebawah indikator pemicunya, %D diatas area jenuh beli, yang menunjukkan potensi indeks melemah dalam jangka pendek.
- Indikator Chaikin Money Flow berada diatas nol, dengan dominasi tekanan beli kategori semi kuat.
- Artinya secara teknikal, diperiode menengah (1-5 hari kedepan) pasar diprediksi **melemah**. Sedangkan untuk hari ini, indeks diperkirakan bergerak **melemah**.

Seleksi Saham, 6 September 2017

Panduan Penggunaan

1. Tabel ini berguna untuk menyeleksi saham-saham yang menarik untuk diperdagangkan hari ini, berdasarkan sinyal dari sejumlah indikator teknikal seperti Fast Stochastic, Slow Stochastic, RSI, dan Stoch RSI.
2. Fokuskan analisis Anda pada saham-saham yang memberikan sinyal sama dan terbanyak, baik (B) atau (S). Perhatikan juga saham-saham dengan indikator utama Fast Stochastic (FS), Slow Stochastic (SS) yang menunjukkan sinyal (B) atau (S) secara bersamaan.
3. Sebelum melakukan aksi beli atau jual, Anda wajib melakukan analisis teknikal untuk saham yang sudah dipilih sebelumnya. Meskipun indikator teknikal suatu saham memberikan banyak sinyal beli (B), bukan berarti posisi beli atau potensi kenaikan yang mutlak terjadi. Anda tetap diwajibkan menganalisis kondisi dan timing pergerakan saham tersebut, dengan analisis teknikal.
4. Rentang pergerakan harga *support resistance* harian ini dihitung dengan menggunakan metode pivot point dan data input harian.
5. Informasi ini juga bisa Anda dapatkan di website dmia.danareksaonline.com.

	Kode	Aneka Industri	MACD	FS	SS	RSI	StochRSI	CCI	S2	S1	R1	R2
1	ASII	ASTRA INTERNATIONAL Tbk	B		S	S	S	B	7,583	7,692	7,867	7,933
2	AUTO	ASTRA OTOPARTS Tbk	B	S	B	S	S	S	2,443	2,607	2,857	2,943
3	GJTL	GAJAH TUNGGAL Tbk	S	S	B	S	S	S	715	740	805	845
4	MYRX	HANSON INTERNATIONAL Tbk	B	S		B	B	B	129	131	133	133
5	IMAS	INDOMOBIL SUKSES INTERNASIONAL	S	B	B	S	S	S	898	902	907	908
6	INDS	INDOSPRING Tbk	S	S	S	S	S	S	987	993	1,008	1,017
7	KBLI	KMI Wire and Cable Tbk	S	B	BB	S	S	S	386	394	410	418
8	MASA	MULTISTRADA ARAH SARANA TBK	B	B	B	B	B	B	192	206	232	244
9	PBRX	PAN BROTHERS Tbk	B	S	B	S	S	S	435	443	455	459
10	ADMG	POLYCHEM INDONESIA Tbk	S	B	B	S	S	S	174	176	179	180
11	PRAS	PRIMA ALLOY STEEL UNIVERSAL Tbk	B		S	B	S	B	225	239	261	269
13	SMSM	SELAMAT SEMPURNA Tbk	B	S	B	B	B	B	1,132	1,138	1,153	1,162

	Kode	Industri Barang Konsumsi	MACD	FS	SS	RSI	StochRSI	CCI	S2	S1	R1	R2
1	ADES	AKASHA WIRA INTERNATIONAL Tbk	S	S	S	S	S	S	1,005	1,005	1,005	1,005
2	DVLA	DARYA - VARIA LABORATORIA Tbk	S			S	S	S	1,960	1,960	1,960	1,960
3	GGRM	GUDANG GARAM Tbk	S	S	S	S	S	S	64,767	65,433	67,083	68,067
4	HMSP	HANJAYA MANDALA SAMPOERNA Tbk	B		S	B	B	B	3,537	3,603	3,703	3,737
5	ICBP	INDOFOOD CBP SUKSES MAKMUR Tbk	B	S	S	S	S	S	8,475	8,525	8,650	8,725
6	INDF	INDOFOOD SUKSES MAKMUR Tbk	B		S	S	S	S	8,225	8,300	8,425	8,475
7	KLBF	KALBE FARMA Tbk	S		S	S	S	B	1,682	1,698	1,723	1,732
8	KDSI	KEDAWUNG SETIA INDUSTRIAL Tbk	S	B	B	S	S	S	477	477	479	481
9	KAEF	KIMIA FARMA (PERSERO) Tbk	S	S	S	S	S	S	3,077	3,133	3,233	3,277
10	MYOR	MAYORA INDAH Tbk	B	S	S	S	S	S	1,943	1,957	1,992	2,013
11	ROTI	NIPPON INDOSARI CORPINDO Tbk	B	B	B	B	B	B	1,208	1,222	1,247	1,258
12	PYFA	PYRIDAM FARMA Tbk	S			S	S	S	191	191	191	191
13	TSPC	TEMPO SCAN PACIFIC Tbk	S	S	S	S	S	S	1,870	1,880	1,905	1,920
14	AISA	TIGA PILAR SEJAHTERA FOOD Tbk	B	S	S	S	S	S	988	997	1,022	1,038
15	ULTJ	ULTRAJAYA MILK IND AND TRDG CO	B	B	B	B	B	B	1,182	1,213	1,263	1,282
16	UNVR	UNILEVER INDONESIA Tbk	B	B		B	B	B	50,183	50,592	51,217	51,433

No	Kode	Industri Kimia	MACD	FS	SS	RSI	StochRSI	CCI	S2	S1	R1	R2
2	ARNA	ARWANA CITRAMULIA Tbk	S	B	B	S	S	B	423	429	439	443
4	APLI	ASIPLAST INDUSTRIES Tbk	S	S	S	S	S	S	86	88	91	92
5	BTON	BETONJAYA MANUNGAL Tbk	B	B		B	B	B	109	111	115	117
6	BUDI	BUDI STARCH AND SWEETENER Tbk			S	S	S	S	95	95	96	97
8	TPIA	CHANDRA ASRI PETROCHEMICAL Tbk	S	B	S	S	S	B	20,933	21,042	21,217	21,283
9	CPIN	CHAROEN POKPHAND INDONESIA Tbk		S	S	S	S	S	2,643	2,677	2,747	2,783
10	EKAD	EKADHARMA INTERNATIONAL Tbk	S		B	S	S	S	623	637	667	683
12	GDST	GUNAWAN DIANJAYA STEEL Tbk	S	B	S	S	S	S	93	94	96	97
13	SMCB	HOLCIM INDONESIA Tbk	S	B	S	S	S	S	773	782	797	803
14	INKP	INDAH KIAT PULP AND PAPER Tbk	B	S	B	B	B	B	3,033	3,077	3,157	3,193
16	INTP	INDOCEMENT TUNGGAL PRAKARSA Tbk	S	S	S	S	S	S	17,933	18,267	19,017	19,433
17	IPOL	INDOPOLY SWAKARSA INDUSTRY Tbk	S		S	S	B	S	161	165	172	175
18	JPFA	JAPFA COMFEED INDONESIA Tbk	B	S		S	S	S	1,125	1,145	1,185	1,205
19	JPRS	JAYA PARI STEEL Tbk	S		B	S	S	S	134	136	140	142
20	MAIN	MALINDO FEEDMILL Tbk	B	S	S	S	S	B	885	895	920	935
21	TKIM	PABRIK KERTAS TJIWI KIMIA Tbk	B	S	S	B	B	B	1,603	1,657	1,757	1,803
22	SMGR	SEMEN INDONESIA (PERSERO) Tbk	S	S	S	S	S	S	9,483	9,592	9,917	10,133

No	Kode	Industri Keuangan	MACD	FS	SS	RSI	StochRSI	CCI	S2	S1	R1	R2
1	ADMF	ADIRA DINAMIKA MULTI FINANCE Tbk	S	B	S	S	S	S	6,658	6,717	6,817	6,858
3	INPC	BANK ARTHA GRAHA INTERNASIONAL Tbk	S	BB	B	S	S	S	89	89	90	91
4	BBKP	BANK BUKOPIN Tbk	B		S	S	S	S	592	593	598	602
5	BBCA	BANK CENTRAL ASIA Tbk	S		S	B	S	B	18,567	18,783	19,108	19,217
6	BNGA	BANK CIMB NIAGA Tbk	S	S	S	B	S	B	1,337	1,353	1,383	1,397
7	BDMN	BANK DANAMON INDONESIA Tbk	S	S	S	S	S	S	5,183	5,242	5,392	5,483
8	BNII	BANK INTERNASIONAL INDONESIA Tbk	S	S	S	S	S	S	291	295	303	307
9	BJBR	BANK JABAR BANTEN Tbk	S	B	B	S	S	S	2,423	2,477	2,567	2,603
10	BMRI	BANK MANDIRI (PERSERO) Tbk	S	B	B	S	S	S	12,808	12,942	13,142	13,208
11	BBNI	BANK NEGARA INDONESIA Tbk	S		S	S	S	B	7,025	7,125	7,275	7,325
12	PNBN	BANK PAN INDONESIA Tbk	S	S	S	S	S	S	990	1,005	1,040	1,060
13	BNLI	BANK PERMATA Tbk		S	S	S	S	S	678	687	707	718
14	BBRI	BANK RAKYAT INDONESIA (PERSERO) Tbk	S		S	S	S	B	14,650	14,825	15,150	15,300
15	AGRO	BANK RAKYAT INDONESIA AGRONIAGA Tbk			B	S	B	B	454	500	573	600

No	Kode	Industri Keuangan	MACD	FS	SS	RSI	StochRSI	CCI	S2	S1	R1	R2
1	BSIM	BANK SINAR MAS Tbk	B	S	B	S	S	S	863	867	877	883
2	BBTN	BANK TABUNGAN NEGARA (PERSERO) Tbk	B	B	B	B	B	B	3,013	3,087	3,207	3,253
3	BTPN	BANK TABUNGAN PENSUNAN NASIONAL Tbk	S	S	S	S	S	S	2,483	2,507	2,557	2,583
4	BVIC	BANK VICTORIA INTERNATIONAL Tbk	S	B	S	S	S	S	200	208	222	228
6	CFIN	CLIPAN FINANCE INDONESIA Tbk	S	B	BB	S	S	S	297	299	301	301
7	KREN	KRESNA GRAHA SEKURINDO Tbk	B			S	S	S	434	440	452	458
8	MFIN	MANDALA MULTIFINANCE Tbk	B	S	S	B	B	B	1,140	1,155	1,180	1,190
9	APIC	PACIFIC STRATEGIC FINANCIAL Tbk	B		B	S	S	S	453	455	459	461
10	PNLF	PANIN FINANCIAL Tbk	S	S		S	S	S	237	241	249	253
11	PANS	PANIN SEKURITAS Tbk	B	S		S	B	B	2,263	2,317	2,397	2,423
12	PNIN	PANINVEST Tbk	B	S	S	B	B	B	812	818	828	832
13	TRIM	TRIMEGAH SECURITIES Tbk	S	B		B	B	B	146	148	152	154
14	VRNA	VERENA MULTI FINANCE Tbk	S			S	S	S	95	95	97	99
15	WOMF	WAHANA OTTOMITRA MULTIARTHA Tbk	B		B	S	S	S	195	197	204	209

No	Kode	Infrastruktur	MACD	FS	SS	RSI	StochRSI	CCI	S2	S1	R1	R2
1	CMNP	CITRA MARGA NUSAPHALA PERSADA Tbk	B			S	S	S	1,317	1,333	1,363	1,377
2	JSMR	JASA MARGA (PERSERO) Tbk	B		B	B	B	B	5,667	5,758	5,908	5,967
3	WEHA	PANORAMA TRANSPORTASI Tbk	S	BB	B	S	S	S	181	186	193	195
4	TMAS	PELAYARAN TEMPURAN EMAS Tbk	B		S	S	S	S	1,143	1,162	1,197	1,213
5	PGAS	PERUSAHAAN GAS NEGARA (PERSERO) Tbk	S	S	S	S	S	S	1,805	1,845	1,960	2,035
6	RAJA	RUKUN RAHARJA Tbk	B	S		S	S	S	309	315	325	329
7	TLKM	TELEKOMUNIKASI INDONESIA Tbk	S	S	S	S	S	S	4,590	4,620	4,680	4,710
8	TBIG	TOWER BERSAMA INFRASTRUCTURE Tbk	S	B	B	S	S	S	6,417	6,458	6,558	6,617
9	TRAM	TRADA MARITIME Tbk	B		S	B	S	B	137	149	170	179
11	EXCL	XL Axiata Tbk	B	B		B	B	B	3,637	3,683	3,763	3,797

No	Kode	Pertambangan	MACD	FS	SS	RSI	StochRSI	CCI	S2	S1	R1	R2
1	ADRO	ADARO ENERGY Tbk	S		S	B	S	B	1,743	1,802	1,902	1,943
2	ANTM	ANEKA TAMBANG Tbk	B	S	S	S	S	S	677	693	723	737
3	CITB	CITATAH Tbk	B		S	S	S	S	79	79	79	79
6	HRUM	HARUM ENERGY Tbk	S		B	S	S	B	2,163	2,227	2,327	2,363
7	ITMG	INDO TAMBANGRAYA MEGAH Tbk	S		BB	S	S	S	18,633	18,842	19,267	19,483
8	MEDC	MEDCO ENERGI INTERNASIONAL Tbk	B	S	S	B	B	B	3,127	3,213	3,353	3,407
12	KGIC	RESOURCE ALAM INDONESIA Tbk	B	S	S	S	S	S	345	349	359	365
13	PTBA	TAMBANG BATUBARA BUKIT ASAM (PERSE)	S		B	S	S	S	11,400	11,775	12,350	12,550
14	TINS	TIMAH Tbk	B		S	B	B	B	877	908	958	977
15	INCO	VALE INDONESIA Tbk		S		S	S	S	2,827	2,903	3,043	3,107

No	Kode	Pertanian dan Perkebunan	MACD	FS	SS	RSI	StochRSI	CCI	S2	S1	R1	R2
1	AALI	ASTRA AGRO LESTARI Tbk	S	B	S	S	S	B	14,550	14,700	14,950	15,050
2	BISI	BISI INTERNATIONAL Tbk	B	B	S	S	S	S	1,447	1,453	1,468	1,477
3	BWPT	BW PLANTATION Tbk.	B	B	B	S	B	B	210	214	220	222
4	DSFI	DHARMA SAMUDERA FISHING INDUSTRIES	B		S	S	S	S	117	120	126	129
5	LSIP	PP LONDON SUMATRA INDONESIA Tbk				S	B	B	1,307	1,343	1,403	1,427
6	SGRO	SAMPOERNA AGRO Tbk	B	B	S	S	S	S	1,993	2,047	2,127	2,153
7	TBLA	TUNAS BARU LAMPUNG Tbk	S		S	S	S	B	1,400	1,410	1,430	1,440

No	Kode	Perdagangan dan Jasa	MACD	FS	SS	RSI	StochRSI	CCI	S2	S1	R1	R2
1	ACES	ACE HARDWARE INDONESIA Tbk	S	S	B	S	B	B	1,043	1,057	1,082	1,093
2	AKRA	AKR CORPORINDO Tbk	B	B		B	B	B	6,817	6,883	7,008	7,067
3	ASGR	ASTRA GRAPHIA Tbk			B	S	B	B	1,550	1,550	1,550	1,550
4	BUVA	BUKIT ULUWATU VILLA Tbk	S	B	B	S	S	S	550	550	550	550
5	CSAP	CATUR SENTOSA ADIPRANA Tbk	S	S	S	S	S	S	461	463	471	477
6	CLPI	COLORPAK INDONESIA Tbk	B		B	S	S	S	960	980	1,010	1,020
8	FORU	FORTUNE INDONESIA Tbk	B	B	B	B	B	B	220	220	220	220
9	BMTR	GLOBAL MEDIACOM Tbk	B	B	B	S	B	B	483	491	503	507
11	SHID	HOTEL SAHID JAYA INTERNATIONAL Tbk	B	B	B	S	S	S	1,120	1,120	1,120	1,120
12	JTPE	JASUINDO TIGA PERKASA Tbk	S		S	S	S	S	305	305	307	309
13	LTLS	LAUTAN LUAS Tbk	S	S		S	S	S	451	457	471	479

No	Kode	Perdagangan dan Jasa	MACD	FS	SS	RSI	StochRSI	CCI	S2	S1	R1	R2
1	MPPA	MATAHARI PUTRA PRIMA Tbk	S	S	S	S	S	S	552	573	618	642
2	MNCN	MEDIA NUSANTARA CITRA Tbk	B	S	S	S	S	S	1,343	1,382	1,457	1,493
3	MTDL	METRODATA ELECTRONICS Tbk	B	B	B	S	S	S	610	610	610	610
4	SDPC	MILLENNIUM P. INTERNATIONAL Tbk	S			S	S	S	106	108	112	114
5	MAPI	MITRA ADIPERKASA Tbk		S	S	S	S	S	6,392	6,483	6,733	6,892
7	MLPL	MULTIPOLAR Tbk	S	S	S	S	S	S	185	188	197	203
9	RALS	RAMAYANA LESTARI SENTOSA Tbk	B	S	S	S	S	S	920	935	975	1,000
11	AMRT	SUMBER ALFARIA TRIJAYA Tbk	S	S	S	S	S	S	647	648	653	657
12	SCMA	SURYA CITRA MEDIA Tbk	S	S		S	S	S	2,093	2,117	2,167	2,193
13	TMPO	TEMPO INTI MEDIA Tbk	S			B	S	B	211	217	227	231
14	TURI	TUNAS RIDEAN Tbk	B		B	B	B	B	1,068	1,077	1,092	1,098
15	UNTR	UNITED TRACTORS Tbk	S		S	B	B	B	29,467	29,933	30,633	30,867

Nb	Kode	Properti dan Real Estat	MACD	FS	SS	RSI	StochRSI	CCI	S2	S1	R1	R2
1	ADHI	ADHI KARYA (PERSERO) Tbk	S	B	B	S	S	S	1,902	1,933	1,998	2,032
2	APLN	AGUNG PODOMORO LAND Tbk	S	S	S	S	S	S	226	230	240	246
3	ASRI	ALAM SUTERA REALTY Tbk	S	S	S	S	S	S	321	329	347	357
4	BSDE	BUMI SERPONG DAMAI Tbk	S	S	S	S	S	S	1,800	1,810	1,825	1,830
5	CTRA	CIPUTRA DEVELOPMENT Tbk	S	S	S	S	S	S	1,097	1,118	1,173	1,207
8	COWL	COWELL DEVELOPMENT Tbk	S	S	S	S	S	S	1,168	1,177	1,202	1,218
9	DILD	INTILAND DEVELOPMENT Tbk	S	S		S	S	S	400	404	412	416
10	KIJA	KAWASAN INDUSTRI JABABEKA Tbk			B	S	B	B	309	311	313	313
11	LPCK	LIPPO CIKARANG Tbk	S	S		S	S	S	4,537	4,573	4,663	4,717
12	LPKR	LIPPO KARAWACI Tbk	S	S	S	S	S	S	688	712	772	808
14	MDLN	MODERNLAND REALTY Tbk	S	B	B	S	S	S	254	260	270	274
16	PWON	PAKUWON JATI Tbk	S	S	S	S	S	S	637	648	668	677
17	PTPP	PP (PERSERO) Tbk	S	B	B	S	S	S	2,573	2,637	2,767	2,833
18	BKSL	SENTUL CITY Tbk		S	S	S	S	S	121	133	153	161
19	SMRA	SUMMARECON AGUNG Tbk	S	S	S	S	S	S	963	982	1,022	1,043
20	SSIA	SURYA SEMESTA INTERNUSA Tbk	S		B	S	S	S	637	648	668	677
21	TOTL	TOTAL BANGUN PERSADA Tbk	S	S		S	S	S	735	745	760	765
22	WIKA	WIJAYA KARYA (PERSERO) Tbk	S	BB	B	S	S	S	1,832	1,878	1,958	1,992

Last Updated

5-Sep-17

Keterangan: B: Buy, S: Sell,

Perhitungan level *support* dan *resistance* dilakukan menggunakan *pivot point*

FS : Fast Stochastic

SS : Slow Stochastic

RSI : Relative Strength Index

StochRSI : Stochastic RSI

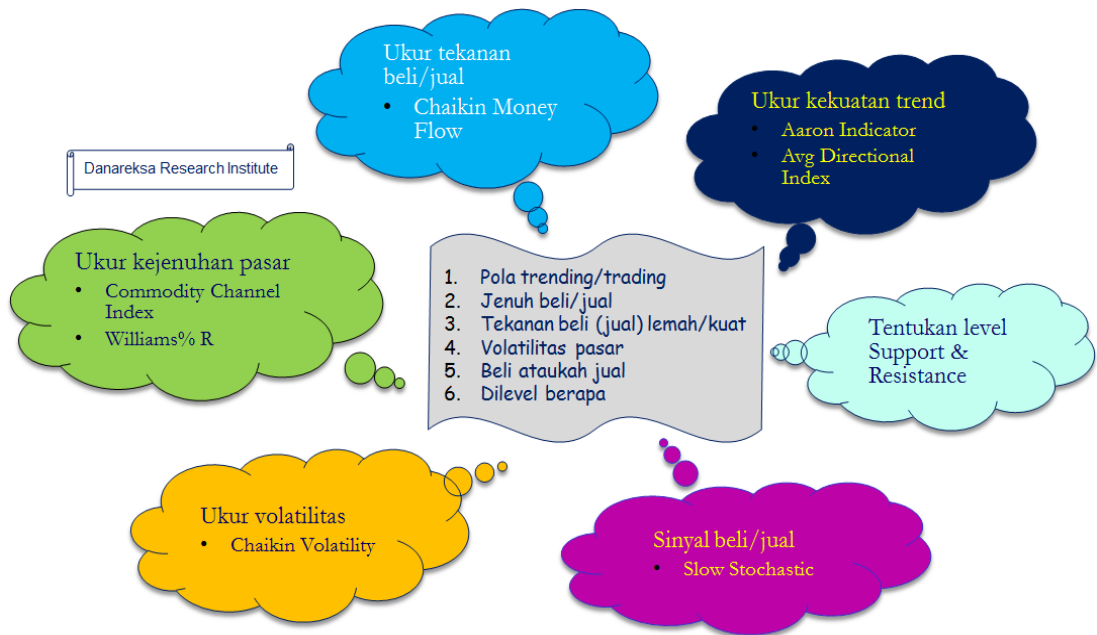
CCI : Commodity Channel Index

S : Support

R : Resistance

Analisa cermat, investasi aktif, dan terus nikmati *return* Anda

Analisis Teknikal Lebih Cepat



Disclaimer:

The information contained in this report has been taken from sources which we deem reliable. However, none of Danareksa Research Institute and/or its affiliated companies and/or their respective employees and/or agents makes any representation or warranty (express or implied) or accepts any responsibility or liability as to, or in relation to, the accuracy or completeness of the information and opinions contained in this report or as to any information contained in this report or any other such information or opinions remaining unchanged after the issue hereof. We have no responsibility to update this report in respect of events and circumstances occurring after the date of this report. We expressly disclaim any responsibility or liability (express or implied) of Danareksa Research Institute and/or its affiliated companies and/or their respective employees and/or agents whatsoever and howsoever arising (including, without limitation for any claims, proceedings, actions, suits, losses, expenses, damages or costs) which may be brought against or suffered by any person as a result of acting in reliance upon the whole or any part of the contents of this report and neither Danareksa Research Institute and/or its affiliated companies and/or their respective employees and/or agents accepts liability for any errors, omissions or mis-statements, negligent or otherwise, in this report and any liability in respect of this report or any inaccuracy herein or omission herefrom which might otherwise arise is hereby expressly disclaimed.

Accordingly, none of Danareksa Research Institute and/or its affiliated companies and/or their respective employees and/or agents shall be liable for any direct, indirect or consequential loss or damage suffered by any person as a result of relying on any statement or omission in any information contained in this report. This report is prepared for general circulation. It does not have regard to the specific person who may receive this report.