

MARKET SCREEN

5 September 2018

Periode Minor (1-5 hari) : Melemah

Periode Intraday : Melemah

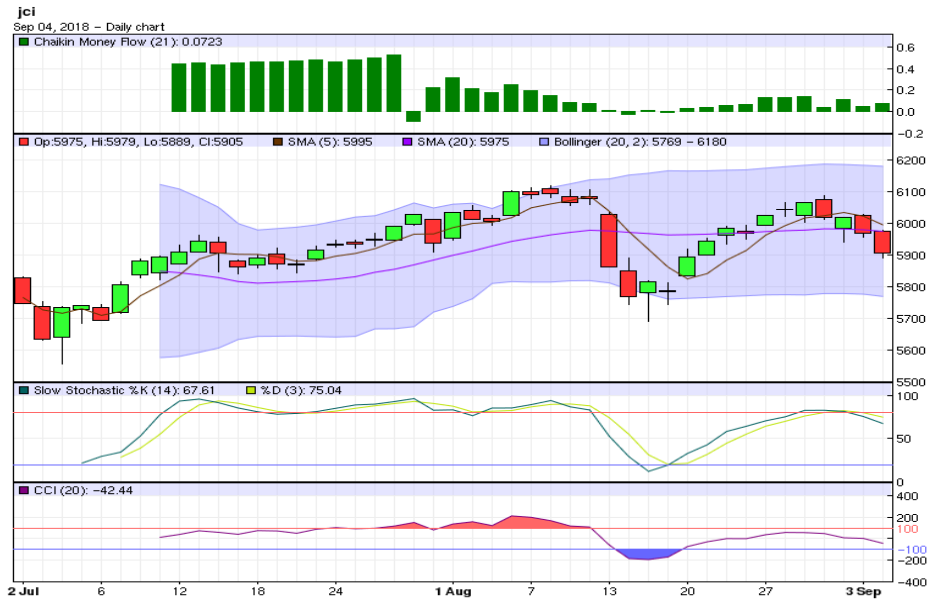
Support-Resistance : 5,834.7 - 6,014.0

Saham yang layak dicermati

HMSP, MYOR, SMGR, BBKP, BBNI, AGRO, TBIG, AALI, AKRA, MDLN, LPCK, DILD

Perkembangan Terkini

- Bursa saham Asia masih memerah, dengan IHSG terkoreksi 1,04 persen kelevel 5.905,30 pada perdagangan Selasa kemarin. Melambatnya ekspansi manufaktur Tiongkok dan tekanan mata uang regional, menjadi sentimen yang menekan pergerakan pasar.
- Sementara itu, bursa AS ditutup melemah pada perdagangan lalu. Indeks saham Dow Jones (-0,05%) dan S&P 500 (-0,17%) masing-masing bergerak kelevel 25.952,48 dan 2.896,72. Eskalasi perang dagang AS dengan negara tetangganya, menjadi faktor pemberat pasar. AS dan Kanada akan kembali melanjutkan pembicaraan perdagangannya minggu ini, ditengah ancang-ancang AS yang akan mengenakan tarif impor atas barang dari Tiongkok hingga senilai US\$ 200 miliar.
- Dari sisi ekonomi AS, indikator ISM Manufacturing PMI bulan Agustus 2018 naik dari level 58,1 kelevel 61,3. Ekspansi sektor manufaktur AS ditopang akselerasi pertumbuhan penerimaan order baru, produksi output dan serapan tenaga kerja.
- Mayoritas bursa Asia pagi ini dibuka melemah. Harga minyak Brent (WTI) turun kelevel US\$ 77,87 (US\$ 69,42) perbarell, dan harga emas lungsur kelevel US\$ 1.197,30/troy ounce.



Pola Indikator Teknikal

- Aaron Up naik diatas Aaron Down, sementara indikator ADX memperlihatkan sinyal indeks bergerak trading melemah.
- Chaikin Volatility dan trend Bollinger Bands Width turun. Volatilitas pasar melemah dan rentang pergerakan harga stabil.
- Indikator CCI dan Williams%R turun menuju area jenuh jual, sebagai indikasi potensi indeks melemah dalam jangka pendek.
- Slow Stochastic %K memotong kebawah indikator pemicunya, %D menuju area jenuh beli, yang menunjukkan potensi indeks melemah dalam jangka pendek.
- Indikator Chaikin Money Flow diatas nol, dengan dominasi tekanan beli kategori lemah.
- Artinya secara teknikal, diperiode menengah (1-5 hari kedepan) pasar diprediksi **melemah**. Sedangkan untuk hari ini, indeks diperkirakan bergerak **melemah**.

Seleksi Saham, 5 September 2018

Panduan Penggunaan

- ✓ Tabel ini berguna untuk menyeleksi saham-saham yang menarik untuk diperdagangkan hari ini, berdasarkan sinyal dari sejumlah indikator teknikal seperti Fast Stochastic, Slow Stochastic, RSI, dan Stoch RSI.
- ✓ Fokuskan analisis Anda pada saham-saham yang memberikan sinyal sama dan terbanyak, baik (B) atau (S). Perhatikan juga saham-saham dengan indikator utama Fast Stochastic (FS), Slow Stochastic (SS) yang menunjukkan sinyal (B) atau (S) secara bersamaan.
- ✓ Sebelum melakukan aksi beli atau jual, Anda wajib melakukan analisis teknikal untuk saham yang sudah dipilih sebelumnya. Meskipun indikator teknikal suatu saham memberikan banyak sinyal beli (B), bukan berarti posisi beli atau potensi kenaikan yang mutlak terjadi. Anda tetap diwajibkan menganalisis kondisi dan timing pergerakan saham tersebut, dengan analisis teknikal.
- ✓ Rentang pergerakan harga *support resistance* harian ini dihitung dengan menggunakan metode pivot point dan data input harian.
- ✓ Informasi ini juga bisa Anda dapatkan di website dmia.danareksaonline.com.

	Kode	Aneka Industri	MACD	FS	SS	RSI	StochRSI	CCI	S2	S1	R1	R2
1	ASII	ASTRA INTERNATIONAL Tbk	S	S	S	S	S	S	6,958	7,017	7,117	7,158
2	AUTO	ASTRA OTOPARTS Tbk		S		S	S	S	1,385	1,395	1,425	1,445
3	GJTL	GAJAH TUNGGAL Tbk	S	S	S	S	S	S	610	615	630	640
4	MYRX	HANSON INTERNATIONAL Tbk	B	S		S	S	S	127	129	133	135
5	IMAS	INDOMOBIL SUKSES INTERNASIONAL Tbk	S	S	S	S	S	S	1,697	1,773	2,003	2,157
6	INDS	INDOSPRING Tbk		S	S	S	S	S	1,943	2,007	2,167	2,263
7	KBLI	KMI Wire and Cable Tbk	S	S		S	S	S	267	269	277	283
8	MASA	MULTISTRADA ARAH SARANA TBK			B	S	S	S	301	307	323	333
9	PBRX	PAN BROTHERS Tbk	S	B	B	S	B	B	471	493	526	537
10	ADMG	POLYCHEM INDONESIA Tbk	S	S	S	S	S	S	325	333	359	377
12	RICY	RICKY PUTRA GLOBALINDO Tbk	S	S	S	S	S	S	154	157	166	172
13	SMSM	SELAMAT SEMPURNA Tbk	B		S	S	S	S	1,310	1,335	1,395	1,430

	Kode	Industri Barang Konsumsi	MACD	FS	SS	RSI	StochRSI	CCI	S2	S1	R1	R2
1	ADES	AKASHA WIRA INTERNATIONAL Tbk	S	B	S	S	S	S	908	912	917	918
3	GGRM	GUDANG GARAM Tbk	S		S	S	S	B	70,383	71,642	73,542	74,183
4	HMSP	HANJAYA MANDALA SAMPOERNA Tbk	B	B	B	B	B	B	3,713	3,767	3,847	3,873
5	ICBP	INDOFOOD CBP SUKSES MAKMUR Tbk	S		S	S	S	S	8,517	8,583	8,758	8,867
6	INDF	INDOFOOD SUKSES MAKMUR Tbk	B			S	S	S	6,233	6,292	6,417	6,483
7	KLBF	KALBE FARMA Tbk	B	S		S	S	S	1,220	1,245	1,310	1,350
8	KDSI	KEDAWUNG SETIA INDUSTRIAL Tbk	S	B	B	S	S	S	853	892	967	1,003
9	KAEF	KIMIA FARMA (PERSERO) Tbk	S	S	S	S	S	S	2,260	2,280	2,340	2,380
10	MYOR	MAYORA INDAH Tbk	S		B	S	B	B	2,797	2,823	2,873	2,897
11	ROTI	NIPPON INDOSARI CORPINDO Tbk	B		B	S	S	S	942	953	983	1,002
13	TSPC	TEMPO SCAN PACIFIC Tbk	B	S	S	S	S	S	1,457	1,468	1,503	1,527
15	ULTJ	ULTRAJAYA MILK IND AND TRDG CO	B	S		S	S	S	1,175	1,190	1,235	1,265
16	UNVR	UNILEVER INDONESIA Tbk	B		S	B	B	B	42,858	43,417	44,267	44,558

	Kode	Industri Kimia	MACD	FS	SS	RSI	StochRSI	CCI	S2	S1	R1	R2
4	ALMI	ALUMINDO LIGHT METAL INDUSTRY Tbk	S	S	S	S	S	S	329	335	349	357
2	ARNA	ARWANA CITRAMULIA Tbk	S	S	S	S	S	S	350	352	356	358
5	BTON	BETONJAYA MANUNGGAL Tbk	S	S		S	S	S	249	255	271	281
6	BUDI	BUDI STARCH AND SWEETENER Tbk	B		S	S	S	S	106	106	108	110
7	IGAR	CHAMPION PACIFIC INDONESIA Tbk	S			B	B	B	390	390	390	390
8	TPJA	CHANDRA ASRI PETROCHEMICAL Tbk	B	S		S	S	S	4,817	4,933	5,258	5,467
9	CPIN	CHAROEN POKPHAND INDONESIA Tbk	S			S	S	S	4,457	4,603	4,973	5,197
10	EKAD	EKADHARMA INTERNATIONAL Tbk	S	B		S	S	S	618	672	757	788
11	ETWA	ETERINDO WAHANATAMA Tbk	S	B	B	S	S	S	79	83	94	101
12	GDST	GUNAWAN DIANJIAYA STEEL Tbk	B	S	S	S	S	S	160	165	182	194
13	SMCB	HOLCIM INDONESIA Tbk	B	S	S	S	S	S	908	932	992	1,028
14	INKP	INDAH KIAT PULP AND PAPER Tbk	S	S	S	S	S	S	18,208	18,367	18,667	18,808
16	INTP	INDOCEMENT TUNGGAL PRAKARSA Tbk	B	S	S	S	S	S	16,242	16,433	16,908	17,192
17	IPOL	INDOPOLY SWAKARSA INDUSTRY Tbk		S	S	S	S	S	94	97	106	112
18	JPFA	JAPFA COMFEED INDONESIA Tbk	S		B	S	S	S	2,053	2,097	2,217	2,293
19	JPRS	JAYA PARI STEEL Tbk	B	B	B	S	S	S	234	234	234	234
20	MAIN	MALINDO FEEDMILL Tbk	S	S	B	S	S	S	1,188	1,217	1,292	1,338
21	TKIM	PABRIK KERTAS TJIWI KIMIA Tbk	S	S	S	S	S	S	13,250	13,600	14,250	14,550
22	SMGR	SEMEN INDONESIA (PERSERO) Tbk	B	S	B	S	S	S	9,058	9,167	9,392	9,508

No	Kode	Industri Keuangan	MACD	FS	SS	RSI	StochRSI	CCI	S2	S1	R1	R2
1	ADMF	ADIRA DINAMIKA MULTI FINANCE Tbk	S		S	B	B	B	8,158	8,242	8,367	8,408
3	INPC	BANK ARTHA GRAHA INTERNASIONAL Tbk	B	S	S	S	S	S	71	71	73	75
4	BBKP	BANK BUKOPIN Tbk	B		B	S	S	S	379	383	395	403
5	BBCA	BANK CENTRAL ASIA Tbk	B	S	S	S	S	S	24,317	24,533	24,933	25,117
6	BNGA	BANK CIMB NIAGA Tbk	S	B	S	S	S	S	898	907	927	938
7	BDMN	BANK DANAMON INDONESIA Tbk	S	S	S	S	S	S	6,675	6,750	6,900	6,975
8	BNII	BANK INTERNASIONAL INDONESIA Tbk	B	S	S	S	S	S	201	203	207	209
9	BJBR	BANK JABAR BANTEN Tbk	B	S		S	S	S	1,858	1,867	1,892	1,908
10	BMRI	BANK MANDIRI (PERSERO) Tbk	S	S	S	S	S	S	6,292	6,433	6,733	6,892
11	BBNI	BANK NEGARA INDONESIA Tbk	B		B	S	S	S	7,317	7,408	7,683	7,867
12	PNBN	BANK PAN INDONESIA Tbk	B	S	S	S	S	S	803	832	912	963
13	BNLI	BANK PERMATA Tbk	S	B	S	S	S	S	482	486	494	498
14	BBRI	BANK RAKYAT INDONESIA (PERSERO) Tbk	S		S	S	S	S	3,023	3,067	3,177	3,243
15	AGRO	BANK RAKYAT INDONESIA AGRONIAGA Tbk	B		B	S	S	S	359	365	383	395

No	Kode	Industri Keuangan	MACD	FS	SS	RSI	StochRSI	CCI	S2	S1	R1	R2
2	BBTN	BANK TABUNGAN NEGARA (PERSERO) Tbk	B	S	S	S	S	S	2,523	2,587	2,727	2,803
3	BTPN	BANK TABUNGAN PENSIUNAN NASIONAL Tbk		S		S	S	S	3,853	3,907	4,007	4,053
4	BVIC	BANK VICTORIA INTERNATIONAL Tbk	S	S	S	S	S	S	197	198	201	203
5	BFIN	BFI FINANCE INDONESIA Tbk	B		S	S	S	S	617	623	643	657
6	CFIN	CLIPAN FINANCE INDONESIA Tbk	S	B	BB	S	B	B	246	252	266	274
7	KREN	KRESNA GRAHA SEKURINDO Tbk	B		B	S	S	S	742	748	763	772
8	MFIN	MANDALA MULTIFINANCE Tbk	S		B	S	B	S	833	837	847	853
10	PNLF	PANIN FINANCIAL Tbk	B		S	B	B	B	194	202	222	234
11	PANS	PANIN SEKURITAS Tbk	S	S	S	S	S	S	1,445	1,480	1,565	1,615
12	PNIN	PANINVEST Tbk	S	B	B	S	S	S	898	932	1,027	1,088
13	TRIM	TRIMEGAH SECURITIES Tbk	B	S	S	S	S	S	115	115	115	115
14	VRNA	VERENA MULTI FINANCE Tbk	S	S	S	S	S	S	103	105	113	119
15	WOMF	WAHANA OTTOMITRA MULTIARTHA Tbk			S	S	S	S	284	292	316	332

No	Kode	Infrastruktur	MACD	FS	SS	RSI	StochRSI	CCI	S2	S1	R1	R2
1	CMNP	CITRA MARGA NUSAPHALA PERSADA T	S	S	S	S	S	S	1,290	1,295	1,310	1,320
2	JSMR	JASA MARGA (PERSERO) Tbk	S		S	S	S	B	4,420	4,480	4,570	4,600
3	WEHA	PANORAMA TRANSPORTASI Tbk	B		S	S	S	S	142	144	147	148
4	TMAS	PELAYARAN TEMPURAN EMAS Tbk	B			S	B	B	680	760	880	920
5	PGAS	PERUSAHAAN GAS NEGARA (PERSERO)	B	S	S	S	S	S	1,947	1,973	2,053	2,107
6	RAJA	RUKUN RAHARJA Tbk	S		S	S	S	S	512	518	538	552
7	TLKM	TELEKOMUNIKASI INDONESIA Tbk	B	S	S	S	S	S	3,347	3,383	3,483	3,547
8	TBIG	TOWER BERSAMA INFRASTRUCTURE T	S	B	B	S	S	S	5,458	5,542	5,692	5,758
9	TRAM	TRADA MARITIME Tbk	B	S	S	S	B	B	203	209	223	231
10	WINS	WINTERMAR OFFSHORE MARINE Tbk	S	S	S	S	S	S	272	272	272	272
11	EXCL	XL Axiata Tbk		S		S	S	S	2,763	2,837	3,027	3,143

No	Kode	Pertambangan	MACD	FS	SS	RSI	StochRSI	CCI	S2	S1	R1	R2
1	ADRO	ADARO ENERGY Tbk	S	S	S	S	S	S	1,762	1,783	1,843	1,882
2	ANTM	ANEKA TAMBANG Tbk	S	S	S	S	S	S	785	795	825	845
3	CTTH	CITATAH Tbk	B	S	S	S	B	B	82	84	90	94
4	ENRG	ENERGI MEGA PERSADA Tbk		S		S	S	S	120	125	138	146
6	HRUM	HARUM ENERGY Tbk	S	S		S	S	S	2,320	2,370	2,510	2,600
7	ITMG	INDO TAMBANGRAYA MEGAH Tbk	B	S	S	S	S	S	26,142	26,683	27,733	28,242
8	MEDC	MEDCO ENERGI INTERNASIONAL Tbk	S	S	S	S	S	S	788	807	857	888
9	MITI	MITRA INVESTINDO Tbk	B	S	S	S	S	S	67	71	84	93
12	KKGI	RESOURCE ALAM INDONESIA Tbk	B	S		S	S	S	353	357	367	373
13	PTBA	TAMBANG BATUBARA BUKIT ASAM (PERSE	S		S	S	S	S	3,913	3,957	4,087	4,173
14	TINS	TIMAH Tbk	S	S	S	S	S	S	732	743	773	792
15	INCO	VALE INDONESIA Tbk	S	S	S	S	S	S	3,390	3,440	3,570	3,650

No	Kode	Pertanian dan Perkebunan	MACD	FS	SS	RSI	StochRSI	CCI	S2	S1	R1	R2
1	AALI	ASTRA AGRO LESTARI Tbk	S		B	S	S	S	12,967	13,108	13,433	13,617
2	BISI	BISI INTERNATIONAL Tbk	B		B	S	S	S	1,377	1,393	1,428	1,447
3	BWPT	BW PLANTATION Tbk.	S	S	S	S	S	S	196	202	218	228
4	DSFI	DHARMA SAMUDERA FISHING INDUSTRIES	B		B	S	S	S	95	98	105	109
5	LSIP	PP LONDON SUMATRA INDONESIA Tbk	S	S		S	S	S	1,302	1,313	1,348	1,372
6	SGRO	SAMPOERNA AGRO Tbk	S		S	S	S	S	2,297	2,303	2,323	2,337
7	TBLA	TUNAS BARU LAMPUNG Tbk	B	S	S	S	S	S	1,107	1,128	1,193	1,237

No	Kode	Perdagangan dan Jasa	MACD	FS	SS	RSI	StochRSI	CCI	S2	S1	R1	R2
1	ACES	ACE HARDWARE INDONESIA Tbk	S			S	S	S	1,333	1,342	1,362	1,373
2	AKRA	AKR CORPORINDO Tbk	S	B	B	S	S	S	3,390	3,460	3,620	3,710
3	ASGR	ASTRA GRAPHIA Tbk	S	B	S	S	S	S	1,517	1,533	1,583	1,617
4	BUVA	BUKIT ULUWATU VILLA Tbk	S	B	B	S	S	S	262	264	268	270
5	CSAP	CATUR SENTOSA ADIPRANA Tbk	S			S	S	S	537	548	583	607
6	CLPI	COLORPAK INDONESIA Tbk	S	S	S	S	S	S	785	790	805	815
9	BMTR	GLOBAL MEDIACOM Tbk	B	S	S	S	S	S	415	419	431	439
10	HEXA	HEXINDO ADIPERKASA Tbk	B		S	S	S	S	3,220	3,260	3,350	3,400
12	JTPE	JASUINDO TIGA PERKASA Tbk	B	B	B	B	B	B	325	331	343	349
13	LTLS	LAUTAN LUAS Tbk	B		B	S	S	S	485	510	550	565

No	Kode	Perdagangan dan Jasa	MACD	FS	SS	RSI	StochRSI	CCI	S2	S1	R1	R2
1	MPPA	MATAHARI PUTRA PRIMA Tbk	B	S	S	S	S	S	182	186	198	206
2	MNCN	MEDIA NUSANTARA CITRA Tbk	S		S	S	S	S	857	868	898	917
3	MTDL	METRODATA ELECTRONICS Tbk	B	S	S	S	S	S	685	690	705	715
4	SDPC	MILLENNIUM P. INTERNATIONAL Tbk	S	S		S	S	S	97	98	99	99
5	MAPI	MITRA ADIPERKASA Tbk	S			S	S	S	782	798	838	862
6	MICE	MULTI INDOCITRA Tbk	S	B	B	S	B	B	387	397	411	415
8	PANR	PANORAMA SENTRAWISATA Tbk	B	S	S	S	S	S	421	423	427	429
9	RALS	RAMAYANA LESTARI SENTOSA Tbk	B			S	S	S	1,182	1,208	1,288	1,342
11	AMRT	SUMBER ALFARIA TRIDAYA Tbk	B	S	B	S	S	S	777	813	868	887
12	SCMA	SURYA CITRA MEDIA Tbk	B	S	S	S	S	S	1,987	2,013	2,073	2,107

No	Kode	Properti dan Real Estat	MACD	FS	SS	RSI	StochRSI	CCI	S2	S1	R1	R2
1	ADHI	ADHI KARYA (PERSERO) Tbk	S	S	S	S	S	S	1,438	1,452	1,487	1,508
2	APLN	AGUNG PODOMORO LAND Tbk	B	B	S	S	S	S	149	150	153	155
3	ASRI	ALAM SUTERA REALTY Tbk	S	S	S	S	S	S	305	309	319	325
4	BSDE	BUMI SERPONG DAMAI Tbk	B	S	S	S	S	S	1,167	1,173	1,193	1,207
5	CTRA	CIPUTRA DEVELOPMENT Tbk	S	S	S	S	S	S	783	797	832	853
8	COWL	COWELL DEVELOPMENT Tbk	B	S	S	S	S	S	622	628	643	652
9	DILD	INTILAND DEVELOPMENT Tbk	S	B	S	S	B	B	297	309	339	357
10	KJIA	KAWASAN INDUSTRI JABABEKA Tbk	S	B	S	S	S	S	206	208	212	214
11	LPCK	LIPPO CIKARANG Tbk	B		B	S	S	S	1,805	1,840	1,930	1,985
12	LPKR	LIPPO KARAWACI Tbk	B		B	S	S	S	342	346	358	366
14	MDLN	MODERNLAND REALTY Tbk	B	S	B	S	S	S	231	237	247	251
15	DGIK	NUSA KONSTRUKSI ENJINIRING Tbk	B			S	S	S	50	50	50	50
16	PWON	PAKUWON JATI Tbk	S			S	S	B	505	510	520	525
17	PTPP	PP (PERSERO) Tbk	B	S	S	S	S	S	1,775	1,790	1,835	1,865
18	BKSL	SENTUL CITY Tbk	S	S	S	S	S	S	110	112	118	122
19	SMRA	SUMMARECON AGUNG Tbk	B	S	S	S	S	S	622	628	648	662
20	SSIA	SURYA SEMESTA INTERNUSA Tbk	S		B	S	S	S	447	453	473	487
21	TOTL	TOTAL BANGUN PERSADA Tbk	S	S	S	S	S	S	597	603	618	627
22	WIKA	WIJAYA KARYA (PERSERO) Tbk	S	B	S	S	S	B	1,488	1,522	1,592	1,628

Keterangan: **B: Buy, S: Sell,**

Perhitungan level *support* dan *resistance* dilakukan menggunakan *pivot point*

FS : Fast Stochastic

SS : Slow Stochastic

RSI : Relative Strength Index

StochRSI : Stochastic RSI

CCI : Commodity Channel Index

S : Support

R : Resistance

Analisis Teknikal Lebih Cepat



Disclaimer:

The information contained in this report has been taken from sources which we deem reliable. However, none of Danareksa Research Institute and/or its affiliated companies and/or their respective employees and/or agents makes any representation or warranty (express or implied) or accepts any responsibility or liability as to, or in relation to, the accuracy or completeness of the information and opinions contained in this report or as to any information contained in this report or any other such information or opinions remaining unchanged after the issue hereof. We have no responsibility to update this report in respect of events and circumstances occurring after the date of this report. We expressly disclaim any responsibility or liability (express or implied) of Danareksa Research Institute and/or its affiliated companies and/or their respective employees and/or agents whatsoever and howsoever arising (including, without limitation for any claims, proceedings, actions, suits, losses, expenses, damages or costs) which may be brought against or suffered by any person as a result of acting in reliance upon the whole or any part of the contents of this report and neither Danareksa Research Institute and/or its affiliated companies and/or their respective employees and/or agents accepts liability for any errors, omissions or mis-statements, negligent or otherwise, in this report and any liability in respect of this report or any inaccuracy herein or omission herefrom which might otherwise arise is hereby expressly disclaimed.

Accordingly, none of Danareksa Research Institute and/or its affiliated companies and/or their respective employees and/or agents shall be liable for any direct, indirect or consequential loss or damage suffered by any person as a result of relying on any statement or omission in any information contained in this report. This report is prepared for general circulation. It does not have regard to the specific person who may receive this report.