

MARKET SCREEN

4 September 2018

Periode Minor (1-5 hari) : Melemah

Periode Intraday : Melemah

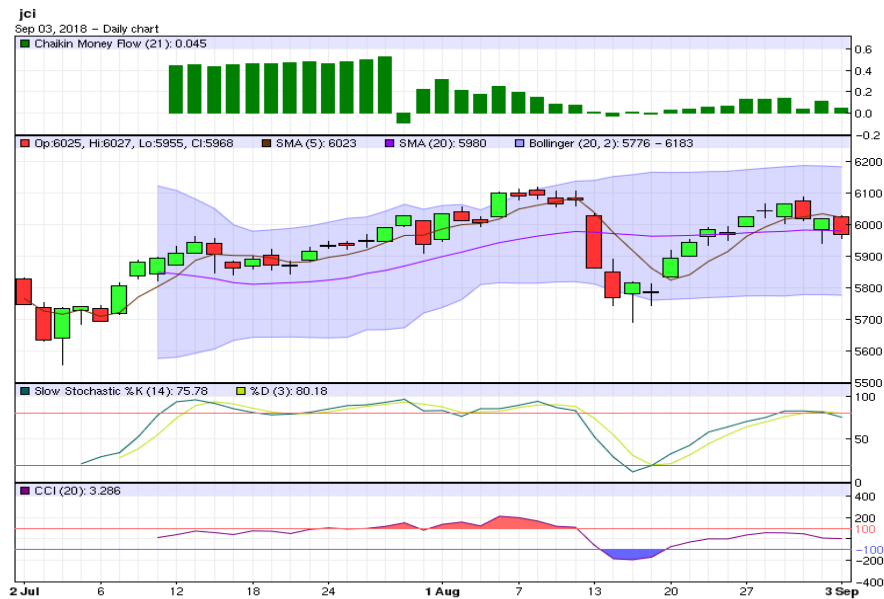
Support-Resistance : 5,911.2 - 6,055.1

Saham yang layak dicermati

MASA, HMSP, ROTI, KLBF, JPFA, BBKP, BBNI, PNB, AALI, BISI, TBLA, LPCK, LPKR, PWON, SSIA

Perkembangan Terkini

- Mayoritas bursa saham Asia memulai pekan pertama September dengan muram. IHSG sendiri ditutup melemah 0,85 persen kelevel 5.967,58 diperdagangkan kemarin. Belum tercapainya kesepakatan dagang AS-Kanada, berlanjutnya penguatan Dolar AS, krisis ekonomi di Argentina dan Turki, menjadi sentimen yang membebani pasar.
- Publikasi ekonomi terbaru yang masuk kepasar kemarin berasal dari domestik dan Tiongkok, seperti laju inflasi Indonesia bulan Agustus 2018, dan indikator Caixin/Markit Purchasing Manager's Index (PMI). BPS mengumumkan bahwa harga ditingkat konsumen dibulan Agustus menurun 0,05% mom (+3,20% yoy). Deflasi bulanan ini terjadi seiring turunnya harga komponen bahan makanan (-1,10% mom), sandang (-0,07% mom), dan transportasi (-0,15% mom). Disisi lain, dimulainya tahun ajaran baru mendorong tingkat harga dikelompok pendidikan meningkat 1,03% mom. Selanjutnya, Caixin PMI Tiongkok bulan Agustus turun dari level 50,8 kelevel 50,6, atau level terendah sejak Juni 2017 yang mengindikasikan melambatnya ekspansi aktivitas manufaktur Tiongkok. Penerimaan order baru cenderung tumbuh melambat, dan penjualan ekspor menurun. Sedangkan output produksi masih menunjukkan kenaikan.
- Sementara itu, bursa AS ditutup Senin lalu untuk memperingati Labor Day. Para investor diperkirakan akan mencermati rilis terbaru sejumlah indikator AS minggu ini, diantaranya ISM Manufacturing PMI, laporan ADP Non-Farm Employment, rerata pendapatan tenaga kerja, dan tingkat pengangguran.
- Mayoritas bursa Asia pagi ini dibuka melemah. Harga minyak Brent (WTI) naik kelevel US\$ 78,06 (US\$ 70,01) perbarell, dan harga emas turun kelevel US\$ 1.206,20/troy ounce.



Pola Indikator Teknikal

- Aaron Down turun bersama dengan Aaron Up, sementara indikator ADX memperlihatkan sinyal indeks bergerak trading melemah.
- Chaikin Volatility dan trend Bollinger Bands Width turun. Volatilitas pasar melemah dan rentang pergerakan harga stabil.
- Indikator CCI dan Williams%R turun menuju area jenuh jual, sebagai indikasi potensi indeks melemah dalam jangka pendek.
- Slow Stochastic %K memotong kebawah indikator pemicunya, %D menuju area jenuh beli, yang menunjukkan potensi indeks melemah dalam jangka pendek.
- Indikator Chaikin Money Flow diatas nol, dengan dominasi tekanan beli kategori lemah.
- Artinya secara teknikal, diperiode menengah (1-5 hari kedepan) pasar diprediksi **melemah**. Sedangkan untuk hari ini, indeks diperkirakan bergerak **melemah**.

Seleksi Saham, 4 September 2018

Panduan Penggunaan

- ✓ Tabel ini berguna untuk menyeleksi saham-saham yang menarik untuk diperdagangkan hari ini, berdasarkan sinyal dari sejumlah indikator teknikal seperti Fast Stochastic, Slow Stochastic, RSI, dan StochRSI.
- ✓ Fokuskan analisis Anda pada saham-saham yang memberikan sinyal sama dan terbanyak, baik (B) atau (S). Perhatikan juga saham-saham dengan indikator utama Fast Stochastic (FS), Slow Stochastic (SS) yang menunjukkan sinyal (B) atau (S) secara bersamaan.
- ✓ Sebelum melakukan aksi beli atau jual, Anda wajib melakukan analisis teknikal untuk saham yang sudah dipilih sebelumnya. Meskipun indikator teknikal suatu saham memberikan banyak sinyal beli (B), bukan berarti posisi beli atau potensi kenaikan yang mutlak terjadi. Anda tetap diwajibkan menganalisis kondisi dan timing pergerakan saham tersebut, dengan analisis teknikal.
- ✓ Rentang pergerakan harga *support resistance* harian ini dihitung dengan menggunakan metode pivot point dan data input harian.
- ✓ Informasi ini juga bisa Anda dapatkan di website dmia.danareksaonline.com.

	Kode	Aneka Industri	MACD	FS	SS	RSI	StochRSI	CCI	S2	S1	R1	R2
1	ASII	ASTRA INTERNATIONAL Tbk	S	S	S	S	S	S	6,950	7,025	7,225	7,350
2	AUTO	ASTRA OTOPARTS Tbk	B		B	S	S	S	1,418	1,427	1,452	1,468
3	GJTL	GAJAH TUNGGAL Tbk	S	S	S	S	S	S	617	623	643	657
4	MYRX	HANSON INTERNATIONAL Tbk	B		B	S	S	S	126	129	138	144
5	IMAS	INDOMOBIL SUKSES INTERNASIONAL Tbk	S			S	S	S	1,950	2,000	2,140	2,230
6	INDS	INDOSPRING Tbk	B	S		S	S	S	2,007	2,073	2,233	2,327
7	KBLI	KMI Wire and Cable Tbk	S		B	S	S	S	257	267	291	305
8	MASA	MULTISTRADA ARAH SARANA TBK		B	B	S	S	S	324	324	324	324
9	PBRX	PAN BROTHERS Tbk	S	B	S	S	S	S	487	493	503	507
10	ADMG	POLYCHEM INDONESIA Tbk	S	S		S	S	S	343	351	371	383
11	PRAS	PRIMA ALLOY STEEL UNIVERSAL Tbk	S	B	S	S	S	B	184	188	198	204
13	SMSM	SELAMAT SEMPURNA Tbk	B	B	S	S	S	S	1,375	1,385	1,405	1,415

	Kode	Industri Barang Konsumsi	MACD	FS	SS	RSI	StochRSI	CCI	S2	S1	R1	R2
1	ADES	AKASHA WIRA INTERNATIONAL Tbk	S	B	S	S	S	B	908	912	917	918
3	GGRM	GUDANG GARAM Tbk	S	S	S	S	S	S	70,133	70,967	73,067	74,333
4	HMSP	HANJAYA MANDALA SAMPOERNA Tbk	B	B	B	S	S	S	3,657	3,723	3,843	3,897
5	ICBP	INDOFOOD CBP SUKSES MAKMUR Tbk	S	S		S	B	B	8,617	8,658	8,758	8,817
6	INDF	INDOFOOD SUKSES MAKMUR Tbk	B	B	S	S	S	S	6,308	6,342	6,392	6,408
7	KLBF	KALBE FARMA Tbk	B		B	S	S	S	1,287	1,303	1,343	1,367
8	KDSI	KEDAWUNG SETIA INDUSTRIAL Tbk	S	S	S	S	S	S	905	920	965	995
9	KAEF	KIMIA FARMA (PERSERO) Tbk		S	S	S	S	S	2,263	2,297	2,377	2,423
10	MYOR	MAYORA INDAH Tbk	S		B	S	S	S	2,760	2,800	2,890	2,940
11	ROTI	NIPPON INDOSARI CORPINDO Tbk	B	B	B	B	B	B	932	958	998	1,012
13	TSPC	TEMPO SCAN PACIFIC Tbk	B	S	S	S	S	S	1,467	1,473	1,493	1,507
15	ULTJ	ULTRAJAYA MILK IND AND TRDG CO	B		B	S	S	S	1,142	1,178	1,273	1,332
16	UNVR	UNILEVER INDONESIA Tbk	B	S	S	S	S	S	43,225	43,450	43,925	44,175

	Kode	Industri Kimia	MACD	FS	SS	RSI	StochRSI	CCI	S2	S1	R1	R2
1	ALMI	ALUMINDO LIGHT METAL INDUSTRY Tbk	S	S	S	S	S	S	347	351	359	363
2	ARNA	ARWANA CITRAMULIA Tbk	S	S	S	S	S	S	348	352	360	364
4	APLI	ASIAPLAST INDUSTRIES Tbk	S	B	B	S	S	S	95	95	95	95
5	BTON	BETONJAYA MANUNGGAL Tbk	S		B	S	S	S	266	270	282	290
6	BUDI	BUDI STARCH AND SWEETENER Tbk	B			S	S	S	105	107	110	111
7	IGAR	CHAMPION PACIFIC INDONESIA Tbk	S		S	S	S	S	373	377	387	393
8	TPIA	CHANDRA ASRI PETROCHEMICAL Tbk	B		B	S	S	S	5,133	5,242	5,417	5,483
9	CPIN	CHAROEN POKPHAND INDONESIA Tbk	S	B	B	B	S	B	4,912	4,968	5,103	5,182
10	EKAD	EKADHARMA INTERNATIONAL Tbk				S	S	S	728	732	737	738
11	ETWA	ETERINDO WAHANATAMA Tbk	S			B	B	B	89	89	89	89
12	GDST	GUNAWAN DIANJAYA STEEL Tbk	B	S		S	S	S	187	188	189	189
13	SMCB	HOLCIM INDONESIA Tbk	B	S	S	S	S	S	947	973	1,053	1,107
14	INKP	INDAH KIAT PULP AND PAPER Tbk			S	S	S	S	17,642	18,083	19,008	19,492
16	INTP	INDOCEMENT TUNGGAL PRAKARSA Tbk	B		S	S	S	S	16,533	16,742	17,367	17,783
17	IPOL	INDOPOLY SWAKARSA INDUSTRY Tbk	B			S	S	S	101	104	111	115
18	JPFA	JAPFA COMFEED INDONESIA Tbk	S	B	B	B	B	B	2,170	2,200	2,260	2,290
20	MAIN	MALINDO FEEDMILL Tbk	S		S	S	S	S	1,225	1,260	1,355	1,415
21	TKIM	PABRIK KERTAS TJIWI KIMIA Tbk	S	S	S	S	S	S	13,250	13,600	14,400	14,850
22	SMGR	SEMEN INDONESIA (PERSERO) Tbk	B	S	B	S	S	S	9,092	9,183	9,433	9,592

No	Kode	Industri Keuangan	MACD	FS	SS	RSI	StochRSI	CCI	S2	S1	R1	R2
1	ADMF	ADIRA DINAMIKA MULTI FINANCE Tbk	S	S	S	S	B	B	8,200	8,250	8,350	8,400
3	INPC	BANK ARTHA GRAHA INTERNASIONAL Tbk	B	S	S	S	S	S	71	72	73	73
4	BBKP	BANK BUKOPIN Tbk	B	B	B	S	S	S	385	391	405	413
5	BBCA	BANK CENTRAL ASIA Tbk	B	S	S	S	S	S	24,342	24,558	25,033	25,292
6	BNGA	BANK CIMB NIAGA Tbk	S	S	S	S	S	S	902	908	928	942
7	BDMN	BANK DANAMON INDONESIA Tbk	S	S	S	B	S	B	6,792	6,833	6,908	6,942
8	BNI	BANK INTERNASIONAL INDONESIA Tbk	B	S	S	S	S	S	204	206	210	212
9	BJBR	BANK JABAR BANTEN Tbk	B		B	S	S	S	1,890	1,900	1,925	1,940
10	BMRI	BANK MANDIRI (PERSERO) Tbk	S	S	S	S	S	S	6,567	6,633	6,833	6,967
11	BBNI	BANK NEGARA INDONESIA Tbk	B	B	B	B	B	B	7,617	7,733	7,908	7,967
12	PNBN	BANK PAN INDONESIA Tbk	B	S	S	B	B	B	812	848	913	942
13	BNLI	BANK PERMATA Tbk	S	S	S	S	S	S	477	484	501	511
14	BBRI	BANK RAKYAT INDONESIA (PERSERO) Tbk	S		S	S	S	S	3,123	3,147	3,207	3,243
15	AGRO	BANK RAKYAT INDONESIA AGRONIAGA Tbk		B		B	B	B	357	369	395	409

No	Kode	Industri Keuangan	MACD	FS	SS	RSI	StochRSI	CCI	S2	S1	R1	R2
2	BBTN	BANK TABUNGAN NEGARA (PERSERO) Tbk	B	S	S	S	S	S	2,663	2,707	2,797	2,843
3	BTPN	BANK TABUNGAN PENSIUNAN NASIONAL Tbk	B			S	S	S	3,973	3,987	4,017	4,033
4	BVIC	BANK VICTORIA INTERNATIONAL Tbk	S		S	S	S	S	199	199	201	203
5	BFIN	BFI FINANCE INDONESIA Tbk	B		S	B	B	B	623	637	657	663
6	CFIN	CLIPAN FINANCE INDONESIA Tbk	S	B	B	S	S	S	243	247	257	263
7	KREN	KRESNA GRAHA SEKURINDO Tbk		B	B	B	B	B	738	752	772	778
8	MFIN	MANDALA MULTIFINANCE Tbk	S		S	S	S	S	713	747	847	913
10	PNLF	PANIN FINANCIAL Tbk	B		S	B	B	B	197	203	213	217
11	PANS	PANIN SEKURITAS Tbk	S	S	S	S	S	S	1,487	1,513	1,593	1,647
12	PNIN	PANINVEST Tbk	S	B	BB	S	S	B	933	952	992	1,013
13	TRIM	TRIMEGAH SECURITIES Tbk	B		S	S	S	S	115	115	115	115
14	VRNA	VERENA MULTI FINANCE Tbk	S		S	S	S	S	107	108	111	113
15	WOMF	WAHANA OTTOMITRA MULTIARTHA Tbk	B		S	S	S	S	307	315	335	347

No	Kode	Infrastruktur	MACD	FS	SS	RSI	StochRSI	CCI	S2	S1	R1	R2
1	CMNP	CITRA MARGA NUSAPHALA PERSADA T	S		S	S	S	S	1,298	1,307	1,332	1,348
2	JSMR	JASA MARGA (PERSERO) Tbk	S	S	S	S	S	S	4,367	4,423	4,573	4,667
3	WEHA	PANORAMA TRANSPORTASI Tbk	B		S	S	S	S	143	144	146	147
4	TMAS	PELAYARAN TEMPURAN EMAS Tbk	B	S		S	S	S	747	748	753	757
5	PGAS	PERUSAHAAN GAS NEGARA (PERSERO)	B		S	S	S	S	1,977	2,013	2,113	2,177
6	RAJA	RUKUN RAHARJA Tbk	S	S		S	S	S	522	528	548	562
7	TLKM	TELEKOMUNIKASI INDONESIA Tbk	B	S	S	S	S	S	3,437	3,463	3,533	3,577
8	TBIG	TOWER BERSAMA INFRASTRUCTURE T	S			B	S	B	5,417	5,533	5,733	5,817
9	TRAM	TRADA MARITIME Tbk	B	S	S	S	S	S	199	205	223	235
10	WINS	WINTERMAR OFFSHORE MARINE Tbk		S	S	S	S	S	269	271	275	277
11	EXCL	XL Axiata Tbk	B	S	B	S	S	S	2,973	3,027	3,147	3,213

No	Kode	Pertambangan	MACD	FS	SS	RSI	StochRSI	CCI	S2	S1	R1	R2
1	ADRO	ADARO ENERGY Tbk	S	S	S	S	S	S	1,812	1,833	1,883	1,912
2	ANTM	ANEKA TAMBANG Tbk	S		S	S	S	S	810	820	850	870
3	CTTH	CITATAH Tbk	B	S	S	S	S	S	82	84	88	90
4	ENRG	ENERGI MEGA PERSADA Tbk	B		B	S	S	S	131	133	138	141
6	HRUM	HARUM ENERGY Tbk	S		B	S	S	S	2,477	2,503	2,573	2,617
7	ITMG	INDO TAMBANGRAYA MEGAH Tbk	B	S	S	S	S	S	27,050	27,300	28,050	28,550
8	MEDC	MEDCO ENERGI INTERNASIONAL Tbk	S	S	S	S	S	S	837	848	878	897
9	MITI	MITRA INVESTINDO Tbk	B	S	S	S	S	S	78	79	83	86
12	KKGI	RESOURCE ALAM INDONESIA Tbk	B	S	B	B	B	B	357	363	373	377
13	PTBA	TAMBANG BATUBARA BUKIT ASAM (PERSE	S	B	S	S	S	B	3,993	4,047	4,137	4,173
14	TINS	TIMAH Tbk	S	S	S	S	S	S	753	762	787	803
15	INCO	VALE INDONESIA Tbk	S	S	S	S	S	S	3,387	3,473	3,703	3,847

No	Kode	Pertanian dan Perkebunan	MACD	FS	SS	RSI	StochRSI	CCI	S2	S1	R1	R2
1	AALI	ASTRA AGRO LESTARI Tbk		B	B	S	S	S	13,100	13,250	13,600	13,800
2	BISI	BISI INTERNATIONAL Tbk	B	B	B	S	B	B	1,395	1,415	1,455	1,475
3	BWPT	BW PLANTATION Tbk.	S	S		S	S	S	209	213	225	233
4	DSFI	DHARMA SAMUDERA FISHING INDUSTRIES				B	B	B	97	99	104	107
5	LSIP	PP LONDON SUMATRA INDONESIA Tbk			B	S	S	S	1,287	1,318	1,408	1,467
6	SGRO	SAMPOERNA AGRO Tbk	S		S	S	S	S	2,273	2,297	2,337	2,353
7	TBLA	TUNAS BARU LAMPUNG Tbk	B	S	B	B	B	B	1,103	1,152	1,247	1,293

No	Kode	Perdagangan dan Jasa	MACD	FS	SS	RSI	StochRSI	CCI	S2	S1	R1	R2
1	ACES	ACE HARDWARE INDONESIA Tbk	S	S	S	B	B	B	1,268	1,317	1,397	1,428
2	AKRA	AKR CORPORINDO Tbk	S	S	B	S	S	S	3,537	3,573	3,673	3,737
3	ASGR	ASTRA GRAPHIA Tbk	S	S	S	S	S	S	1,503	1,527	1,587	1,623
4	BUVA	BUKIT ULUWATU VILLA Tbk	S	B	B	S	S	S	268	268	268	268
5	CSAP	CATUR SENTOSA ADIPRANA Tbk	S		B	S	S	S	600	600	600	600
6	CLPI	COLORPAK INDONESIA Tbk	S	S		S	S	S	790	795	810	820
9	BMTR	GLOBAL MEDIACOM Tbk	B	S	S	S	S	S	409	419	441	453
10	HEXA	HEXINDO ADIPERKASA Tbk	B		S	B	B	B	3,327	3,353	3,393	3,407
12	JTPE	JASUINDO TIGA PERKASA Tbk	B	B	B	B	B	B	313	321	335	341
13	LTLS	LAUTAN LUAS Tbk	B	B		S	S	S	525	535	550	555

No	Kode	Perdagangan dan Jasa	MACD	FS	SS	RSI	StochRSI	CCI	S2	S1	R1	R2
1	MPPA	MATAHARI PUTRA PRIMA Tbk	B	S	S	S	S	S	193	197	205	209
2	MNCN	MEDIA NUSANTARA CITRA Tbk	S	B	S	S	S	S	888	897	912	918
3	MTDL	METRODATA ELECTRONICS Tbk	B		S	S	S	S	707	708	713	717
4	SDPC	MILLENNIUM P. INTERNATIONAL Tbk	S		B	S	S	S	98	98	98	98
5	MAPI	MITRA ADIPERKASA Tbk	S		B	B	B	B	813	827	847	853
6	MICE	MULTI INDOCITRA Tbk	S	B	B	S	S	S	393	395	397	397
8	PANR	PANORAMA SENTRAWISATA Tbk	B		S	S	S	S	417	421	427	429
9	RALS	RAMAYANA LESTARI SENTOSA Tbk	B		B	S	B	B	1,258	1,282	1,327	1,348
11	AMRT	SUMBER ALFARIA TRIDAYA Tbk	B		B	S	S	S	817	833	883	917
12	SCMA	SURYA CITRA MEDIA Tbk	B	S	S	S	S	S	1,973	2,007	2,097	2,153

No	Kode	Properti dan Real Estat	MACD	FS	SS	RSI	StochRSI	CCI	S2	S1	R1	R2
1	ADHI	ADHI KARYA (PERSERO) Tbk	S	S	S	S	S	S	1,462	1,468	1,488	1,502
2	APLN	AGUNG PODOMORO LAND Tbk	B	S		S	S	S	149	150	153	155
3	ASRI	ALAM SUTERA REALTY Tbk			S	S	S	S	314	316	322	326
4	BSDE	BUMI SERPONG DAMAI Tbk	B	S	S	S	S	S	1,175	1,185	1,215	1,235
5	CTRA	CIPUTRA DEVELOPMENT Tbk	S	S	S	S	S	S	818	827	852	868
8	COWL	COWELL DEVELOPMENT Tbk	B	S		S	S	S	627	633	648	657
9	DILD	INTILAND DEVELOPMENT Tbk	S		S	S	B	B	306	312	322	326
10	KJIA	KAWASAN INDUSTRI JABABEKA Tbk	S		S	S	S	S	207	209	213	215
11	LPCK	LIPPO CIKARANG Tbk		B	B	S	B	B	1,840	1,870	1,935	1,970
12	LPKR	LIPPO KARAWACI Tbk	B	B	B	S	B	B	343	351	365	371
14	MDLN	MODERNLAND REALTY Tbk	B		B	S	S	S	234	238	250	258
15	DGIK	NUSA KONSTRUKSI ENJINIRING Tbk	B			S	S	S	50	50	50	50
16	PWON	PAKUWON JATI Tbk		S	B	S	S	S	500	505	520	530
17	PTPP	PP (PERSERO) Tbk	B			S	S	S	1,823	1,837	1,872	1,893
18	BKSL	SENTUL CITY Tbk	S	S	S	S	S	S	115	118	123	125
19	SMRA	SUMMARECON AGUNG Tbk	B	S	S	S	S	S	638	647	672	688
20	SSIA	SURYA SEMESTA INTERNUSA Tbk	S	B	B	S	S	S	459	467	485	495
21	TOTL	TOTAL BANGUN PERSADA Tbk	S	S		S	S	S	617	618	623	627
22	WIKA	WIJAYA KARYA (PERSERO) Tbk	S	S	S	S	S	S	1,512	1,528	1,563	1,582

Keterangan: **B: Buy, S: Sell,**

Perhitungan level *support* dan *resistance* dilakukan menggunakan *pivot point*

FS : Fast Stochastic

SS : Slow Stochastic

RSI : Relative Strength Index

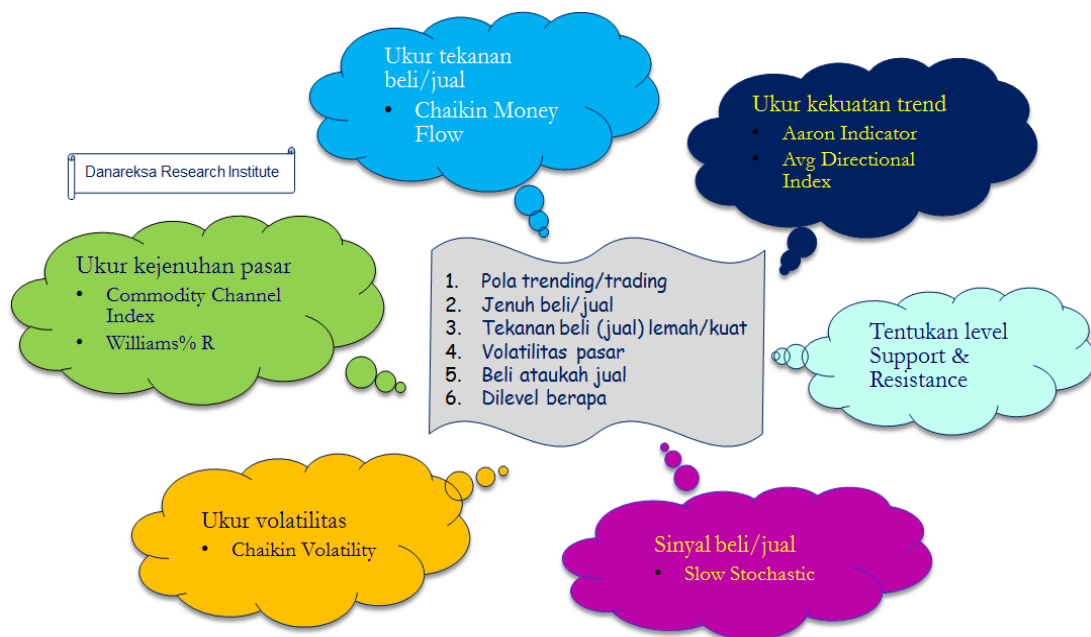
StochRSI : Stochastic RSI

CCI : Commodity Channel Index

S : Support

R : Resistance

Analisis Teknikal Lebih Cepat



Disclaimer:

The information contained in this report has been taken from sources which we deem reliable. However, none of Danareksa Research Institute and/or its affiliated companies and/or their respective employees and/or agents makes any representation or warranty (express or implied) or accepts any responsibility or liability as to, or in relation to, the accuracy or completeness of the information and opinions contained in this report or as to any information contained in this report or any other such information or opinions remaining unchanged after the issue hereof. We have no responsibility to update this report in respect of events and circumstances occurring after the date of this report. We expressly disclaim any responsibility or liability (express or implied) of Danareksa Research Institute and/or its affiliated companies and/or their respective employees and/or agents whatsoever and howsoever arising (including, without limitation for any claims, proceedings, actions, suits, losses, expenses, damages or costs) which may be brought against or suffered by any person as a result of acting in reliance upon the whole or any part of the contents of this report and neither Danareksa Research Institute and/or its affiliated companies and/or their respective employees and/or agents accepts liability for any errors, omissions or mis-statements, negligent or otherwise, in this report and any liability in respect of this report or any inaccuracy herein or omission herefrom which might otherwise arise is hereby expressly disclaimed.

Accordingly, none of Danareksa Research Institute and/or its affiliated companies and/or their respective employees and/or agents shall be liable for any direct, indirect or consequential loss or damage suffered by any person as a result of relying on any statement or omission in any information contained in this report. This report is prepared for general circulation. It does not have regard to the specific person who may receive this report.