

MARKET SCREEN

1 AGUSTUS 2017

Periode Minor (1-5 hari) : Menguat

Periode Intraday : Melemah

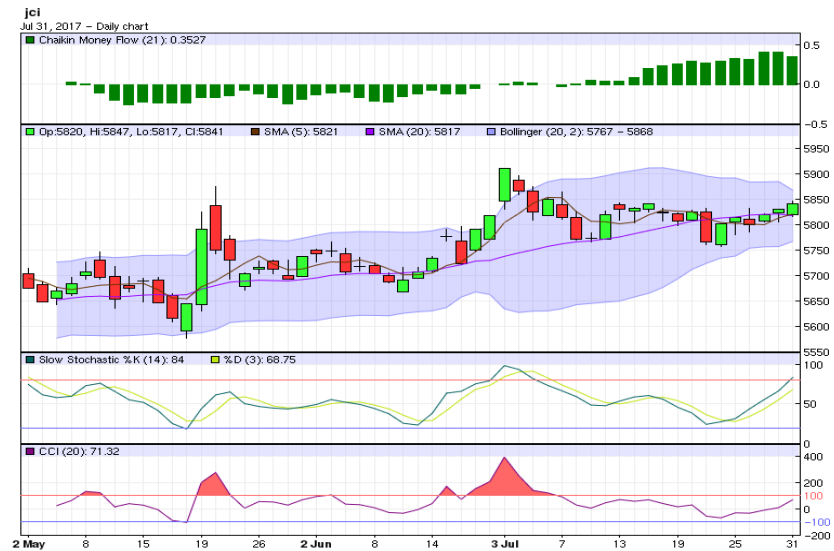
Support-Resistance : 5,804.2 - 5,865.6

Saham yang layak dicermati

AUTO, KLBF, KDSI, ROTI, AISA, UNVR, CPIN, INKP, BNII, BJBR, BMRI, BNLI, BBRI, BBTN, BVIC, TRIM, JSRM, PGAS, EXCL, HRUM, PTBA, SGRO, ASGR, HEXA, MPPA, MAPI, SCMA, TURI, ADHI, CTRA, PWON, PTPP, TOTL, WIKA

Perkembangan Hari Ini

- ✓ IHSG kembali berhasil mencetak kenaikan diperdagangan awal pekan ini. Ditengah mayoritas bursa Asia yang melemah, IHSG naik tipis 0,17 persen kelevel 5.840,94. Publikasi ekonomi terbaru datang dari Tiongkok. Indikator manufaktur Tiongkok terbitan resmi pemerintah-NBS Manufacturing PMI dibulan Juli turun kelevel 51,4 dari level bulan sebelumnya 51,7. Ekspansi sektor manufaktur Tiongkok yang cenderung stagnan, disebabkan pertumbuhan order baru, pesanan baru ekspor, dan output industri yang melambat.
- ✓ Sementara itu, bursa AS ditutup bervariasi pada perdagangan lalu. Indeks saham Dow Jones (+0,28%) dan S&P 500 (-0,07%) masing-masing bergerak kelevel 21.891,12 dan 2.470,30. Publikasi kinerja keuangan emiten terus mendorong pasar bergerak menanjak. Data terbaru menunjukkan bahwa 73 persen perusahaan dalam S&P 500 melaporkan kinerja penjualan dan laba bersih yang sejalan dengan ekspektasi pasar. Dari sisi ekonomi AS, nilai kontrak pembelian rumah dibulan Juni (*pending home sales*) tumbuh 0,5 persen yoy, menyusul penurunan 1,6 persen yoy dibulan sebelumnya.
- ✓ Mayoritas bursa Asia pagi ini dibuka bervariasi. Harga minyak Brent (WTI) naik kelevel US\$ 52,65 (US\$ 50,16) perbarell, dan harga emas menguat kelevel US\$ 1.274,90/troy ounce.



Pola Indikator Teknikal

- Aaron Up dominan diatas Aaron Down, sementara indikator ADX memperlihatkan sinyal indeks bergerak trending menguat.
- Chaikin Volatility dan trend Bollinger Bands Width menurun. Volatilitas pasar cenderung flat dan rentang pergerakan harga relatif stabil.
- Indikator CCI dan Williams%R naik dibawah area jenuh beli, sebagai indikasi potensi indeks naik dalam jangka pendek.
- Slow Stochastic %K bergerak diatas indikator pemicunya, %D diluar area jenuh beli, yang menunjukkan potensi indeks menguat dalam jangka pendek.
- Indikator Chaikin Money Flow berada diatas nol, dengan dominasi tekanan beli kategori kuat.
- Artinya secara teknikal, diperiode menengah (1-5 hari kedepan) pasar diprediksi **menguat**. Sedangkan untuk hari ini, indeks diperkirakan bergerak **melemah**.

Seleksi Saham, 1 Agustus 2017

Panduan Penggunaan

1. Tabel ini berguna untuk menyeleksi saham-saham yang menarik untuk diperdagangkan hari ini, berdasarkan sinyal dari sejumlah indikator teknikal seperti Fast Stochastic, Slow Stochastic, RSI, dan Stoch RSI.
2. Fokuskan analisis Anda pada saham-saham yang memberikan sinyal sama dan terbanyak, baik (B) atau (S). Perhatikan juga saham-saham dengan indikator utama Fast Stochastic (FS), Slow Stochastic (SS) yang menunjukkan sinyal (B) atau (S) secara bersamaan.
3. Sebelum melakukan aksi beli atau jual, Anda wajib melakukan analisis teknikal untuk saham yang sudah dipilih sebelumnya. Meskipun indikator teknikal suatu saham memberikan banyak sinyal beli (B), bukan berarti posisi beli atau potensi kenaikan yang mutlak terjadi. Anda tetap diwajibkan menganalisis kondisi dan timing pergerakan saham tersebut, dengan analisis teknikal.
4. Rentang pergerakan harga *support resistance* harian ini dihitung dengan menggunakan metode pivot point dan data input harian.
5. Informasi ini juga bisa Anda dapatkan di website dmia.danareksaonline.com.

	Kode	Aneka Industri	MACD	FS	SS	RSI	StochRSI	CCI	S2	S1	R1	R2
1	ASII	ASTRA INTERNATIONAL Tbk	S	B	S	S	S	S	7,792	7,883	8,083	8,192
2	AUTO	ASTRA OTOPARTS Tbk	S	B	B	B	B	B	2,467	2,533	2,633	2,667
3	GJTL	GAJAH TUNGGAL Tbk	S		B	S	S	S	940	950	975	990
4	MYRX	HANSON INTERNATIONAL Tbk	S	S	S	S	S	S	128	129	132	134
5	IMAS	INDOMOBIL SUKSES INTERNASIONAL	S	S	S	S	S	S	1,027	1,053	1,103	1,127
6	INDS	INDOSPRING Tbk	B	B		B	B	B	863	892	947	973
7	KBLI	KMI Wire and Cable Tbk	S	B		B	B	B	457	471	495	505
8	MASA	MULTISTRADA ARAH SARANA TBK	S	S	S	S	S	S	205	205	207	209
9	PBRX	PAN BROTHERS Tbk	S		B	S	S	S	495	500	510	515
10	ADMG	POLYCHEM INDONESIA Tbk	S	S	S	S	S	B	189	207	237	249
11	PRAS	PRIMA ALLOY STEEL UNIVERSAL Tbk	S	B		B	B	B	203	207	213	215
12	RICY	RICKY PUTRA GLOBALINDO Tbk	B	S	S	S	S	S	159	163	168	169
13	SMSM	SELAMAT SEMPURNA Tbk	S	S	S	S	S	S	1,092	1,108	1,143	1,162

	Kode	Industri Barang Konsumsi	MACD	FS	SS	RSI	StochRSI	CCI	S2	S1	R1	R2
1	ADES	AKASHA WIRA INTERNATIONAL Tbk	S	B	S	S	S	S	975	980	995	1,005
2	DVLA	DARYA - VARIA LABORATORIA Tbk	S		B	S	S	S	1,983	2,007	2,047	2,063
3	GGRM	GUDANG GARAM Tbk			B	S	S	S	73,033	74,567	78,717	81,333
4	HMSB	HANJAYA MANDALA SAMPOERNA Tbk	S		S	S	S	S	3,483	3,517	3,617	3,683
5	ICBP	INDOFOOD CBP SUKSES MAKMUR Tbk	S	S	S	S	S	S	8,150	8,250	8,475	8,600
6	INDF	INDOFOOD SUKSES MAKMUR Tbk	S		S	S	S	S	8,058	8,217	8,567	8,758
7	KLBF	KALBE FARMA Tbk	B	B	B	B	B	B	1,675	1,705	1,750	1,765
8	KDSI	KEDAWUNG SETIA INDUSTRIAL Tbk	S	B	BB	B	B	B	510	520	535	540
9	KAFF	KIMIA FARMA (PERSERO) Tbk	B		S	S	S	S	3,133	3,167	3,267	3,333
10	MYOR	MAYORA INDAH Tbk	S	S	S	S	S	S	1,795	1,825	1,915	1,975
11	ROTI	NIPPON INDOSARI CORPINDO Tbk	B		B	S	S	S	1,223	1,237	1,267	1,283
12	PYFA	PYRIDAM FARMA Tbk	S	S	S	S	S	S	184	186	192	196
13	TSPC	TEMPO SCAN PACIFIC Tbk	B			S	S	S	1,922	1,928	1,948	1,962
14	AISA	TIGA PILAR SEJAHTERA FOOD Tbk	S	B	B	S	B	B	1,225	1,265	1,360	1,415
15	ULTJ	ULTRAJAYA MILK IND AND TRDG CO	S			S	S	S	4,933	4,967	5,017	5,033
16	UNVR	UNILEVER INDONESIA Tbk			B	B	B	B	46,883	47,917	49,767	50,583

No	Kode	Industri Kimia	MACD	FS	SS	RSI	StochRSI	CCI	S2	S1	R1	R2
1	ALMI	ALUMINDO LIGHT METAL INDUSTRY Tbk	B	S	S	S	S	S	196	208	226	232
4	APLI	ASIAPLAST INDUSTRIES Tbk	S	B	BB	S	S	S	99	101	105	107
5	BTON	BETONJAYA MANUNGAL Tbk	B			S	S	S	111	112	115	117
6	BUDI	BUDI STARCH AND SWEETENER Tbk	S		B	S	S	S	93	94	96	97
7	IGAR	CHAMPION PACIFIC INDONESIA Tbk	B	B	B	S	S	S	433	447	467	473
8	TPJA	CHANDRA ASRI PETROCHEMICAL Tbk	B	S	S	S	S	S	26,983	27,042	27,192	27,283
9	CPIN	CHAROEN POKPHAND INDONESIA Tbk	S	B	B	S	S	S	2,463	2,567	2,797	2,923
10	EKAD	EKADHARMA INTERNATIONAL Tbk	S			S	S	S	610	645	745	810
12	GDST	GUNAWAN DIANJAYA STEEL Tbk	B	S	S	S	S	S	97	98	100	101
13	SMCB	HOLCIM INDONESIA Tbk	B	S		S	S	S	763	772	792	803
14	INKP	INDAH KIAT PULP AND PAPER Tbk		B	B	B	B	B	2,517	2,643	2,833	2,897
16	INTP	INDOCEMENT TUNGGAL PRAKARSA Tbk	S			S	S	S	17,200	17,350	17,625	17,750
18	JPFA	JAPFA COMFEED INDONESIA Tbk	S	S		S	S	S	1,135	1,150	1,195	1,225
19	JPRS	JAYA PARI STEEL Tbk	S	S	S	S	S	S	135	135	137	139
20	MAIN	MALINDO FEEDMILL Tbk	S		B	S	S	S	927	943	988	1,017
22	SMGR	SEMEN INDONESIA (PERSERO) Tbk	S		S	S	S	S	9,683	9,817	10,017	10,083

No	Kode	Industri Keuangan	MACD	FS	SS	RSI	StochRSI	CCI	S2	S1	R1	R2
1	ADMF	ADIRA DINAMIKA MULTI FINANCE Tbk	B	S	B	S	S	S	6,667	6,733	6,833	6,867
2	AMAG	ASURANSI MULTI ARTHA GUNA Tbk	S	S	S	S	S	S	392	392	392	392
3	INPC	BANK ARTHA GRAHA INTERNASIONAL Tbk	B	B	S	S	S	S	91	92	94	95
4	BBKP	BANK BUKOPIN Tbk	S	S	S	S	S	S	578	587	612	628
5	BBCA	BANK CENTRAL ASIA Tbk	B	S	S	S	S	S	18,450	18,575	18,825	18,950
6	BNGA	BANK CIMB NIAGA Tbk	B	S	S	S	S	S	1,240	1,265	1,320	1,350
7	BDMN	BANK DANAMON INDONESIA Tbk	B		S	B	B	B	5,233	5,467	5,817	5,933
8	BNII	BANK INTERNASIONAL INDONESIA Tbk	S		B	B	B	B	306	310	316	318
9	BJBR	BANK JABAR BANTEN Tbk		B	BB	B	B	B	1,943	2,007	2,122	2,173
10	BMRI	BANK MANDIRI (PERSERO) Tbk	S	B	B	B	B	B	13,183	13,417	13,767	13,883
11	BBNI	BANK NEGARA INDONESIA Tbk	B			B	B	B	7,217	7,333	7,508	7,567
12	PNBN	BANK PAN INDONESIA Tbk	S	S	S	S	S	S	1,075	1,080	1,090	1,095
13	BNLI	BANK PERMATA Tbk		B	B	B	B	B	688	697	712	718
14	BBRI	BANK RAKYAT INDONESIA (PERSERO) Tbk	S			B	B	B	14,158	14,467	15,042	15,308
15	AGRO	BANK RAKYAT INDONESIA AGRONIAGA Tbk	S	B	S	S	S	S	577	588	613	627

No	Kode	Industri Keuangan	MACD	FS	SS	RSI	StochRSI	CCI	S2	S1	R1	R2
1	BSIM	BANK SINAR MAS Tbk	B	S	B	S	S	S	847	848	853	857
2	BBTN	BANK TABUNGAN NEGARA (PERSERO) Tbk	B	B	B	B	B	B	2,547	2,573	2,613	2,627
3	BTPN	BANK TABUNGAN PENSIUNAN NASIONAL Tbk	B	S	S	S	S	S	2,507	2,513	2,533	2,547
4	BVIC	BANK VICTORIA INTERNATIONAL Tbk	S	B	B	B	B	B	270	274	282	286
5	BFIN	BFI FINANCE INDONESIA Tbk	B	S	S	S	S	S	522	533	553	562
6	CFIN	CLIPAN FINANCE INDONESIA Tbk	B			S	S	S	307	309	311	311
7	KREN	KRESNA GRAHA SEKURINDO Tbk	B		B	S	B	B	413	417	423	425
8	MFIN	MANDALA MULTIFINANCE Tbk	B	S	B	S	S	S	988	1,017	1,062	1,078
9	APIC	PACIFIC STRATEGIC FINANCIAL Tbk	B	B	B	B	B	B	427	437	451	455
10	PNLF	PANIN FINANCIAL Tbk	B		B	S	S	S	247	249	253	255
11	PANS	PANIN SEKURITAS Tbk	B		B	B	B	B	2,400	2,600	2,900	3,000
12	PNIN	PANINVEST Tbk		B	B	S	S	S	827	828	833	837
13	TRIM	TRIMEGAH SECURITIES Tbk	B	B	B	B	B	B	123	144	175	185
14	VRNA	VERENA MULTI FINANCE Tbk	B		S	S	B	B	90	92	95	96
15	WOMF	WAHANA OTTOMITRA MULTIARTHA Tbk	B		S	B	B	B	168	170	174	176

No	Kode	Infrastruktur	MACD	FS	SS	RSI	StochRSI	CCI	S2	S1	R1	R2
1	CMNP	CITRA MARGA NUSAPHALA PERSADA Tbk			B	S	B	B	1,285	1,315	1,360	1,375
2	JSMR	JASA MARGA (PERSERO) Tbk	B	B	B	B	B	B	5,583	5,717	5,917	5,983
3	WEHA	PANORAMA TRANSPORTASI Tbk	S			S	S	S	194	200	212	218
4	TMAS	PELAYARAN TEMPURAN EMAS Tbk	B	S		S	S	S	1,182	1,188	1,203	1,212
5	PGAS	PERUSAHAAN GAS NEGARA (PERSERO) Tbk	B	B	B	S	S	S	2,217	2,233	2,263	2,277
6	RAJA	RUKUN RAHARJA Tbk	S		B	B	S	B	291	301	317	323
7	TLKM	TELEKOMUNIKASI INDONESIA Tbk	S	B	S	S	S	S	4,623	4,657	4,737	4,783
8	TBIG	TOWER BERSAMA INFRASTRUCTURE Tbk	S	B	B	S	S	S	6,633	6,692	6,842	6,933
9	TRAM	TRADA MARITIME Tbk	B	B	B	S	S	S	95	99	109	115
10	WINS	WINTERMAR OFFSHORE MARINE Tbk		B	BB	B	B	B	283	285	287	287
11	EXCL	XL Axiata Tbk	B	B	B	B	B	B	3,260	3,310	3,390	3,420

No	Kode	Pertambangan	MACD	FS	SS	RSI	StochRSI	CCI	S2	S1	R1	R2
1	ADRO	ADARO ENERGY Tbk	B		S	S	S	S	1,758	1,772	1,812	1,838
2	ANTM	ANEKA TAMBANG Tbk	S	S		S	S	S	677	683	698	707
3	CITB	CITATAH Tbk	B			S	S	S	73	76	80	81
6	HRUM	HARUM ENERGY Tbk	B	B	B	B	B	B	2,093	2,147	2,247	2,293
7	ITMG	INDO TAMBANGRAYA MEGAH Tbk		S	S	S	S	S	19,417	19,708	20,408	20,817
8	MEDC	MEDCO ENERGI INTERNASIONAL Tbk	B			S	S	S	2,607	2,633	2,713	2,767
12	KGIC	RESOURCE ALAM INDONESIA Tbk	S		BB	S	S	S	343	347	357	363
13	PTBA	TAMBANG BATUBARA BUKIT ASAM (PERSE)		B	B	S	S	S	12,933	13,017	13,267	13,433
14	TINS	TIMAH Tbk	B	S	S	S	S	S	778	792	827	848
15	INCO	VALE INDONESIA Tbk	B	S	S	S	S	S	2,347	2,383	2,483	2,547

No	Kode	Pertanian dan Perkebunan	MACD	FS	SS	RSI	StochRSI	CCI	S2	S1	R1	R2
1	AALI	ASTRA AGRO LESTARI Tbk	S	S	S	S	S	B	14,458	14,592	14,817	14,908
2	BISI	BISI INTERNATIONAL Tbk	B		B	S	S	S	1,473	1,502	1,582	1,633
3	BWPT	BW PLANTATION Tbk.		B	S	S	S	S	209	213	225	233
4	DSFI	DHARMA SAMUDERA FISHING INDUSTRIES	S	S	S	S	S	S	127	129	132	133
5	LSIP	PP LONDON SUMATRA INDONESIA Tbk	S	S	S	S	S	B	1,397	1,403	1,418	1,427
6	SGRO	SAMPOERNA AGRO Tbk		B	B	B	B	B	1,983	1,997	2,017	2,023
7	TBLA	TUNAS BARU LAMPUNG Tbk	S		S	S	S	B	1,452	1,468	1,493	1,502

No	Kode	Perdagangan dan Jasa	MACD	FS	SS	RSI	StochRSI	CCI	S2	S1	R1	R2
1	ACES	ACE HARDWARE INDONESIA Tbk	S		S	S	S	S	1,063	1,087	1,137	1,163
2	AKRA	AKR CORPORINDO Tbk	B	B		B	B	B	6,700	6,800	6,950	7,000
3	ASGR	ASTRA GRAPHIA Tbk	B	B	B	S	S	S	1,673	1,677	1,687	1,693
4	BUVA	BUKIT ULUWATU VILLA Tbk	B			S	S	S	580	580	580	580
5	CSAP	CATUR SENTOSA ADIPRANA Tbk	B		B	S	S	S	459	461	465	467
6	CLPI	COLORPAK INDONESIA Tbk	B			S	S	S	983	992	1,012	1,023
8	FORU	FORTUNE INDONESIA Tbk	B		B	S	S	S	228	228	228	228
9	BMTR	GLOBAL MEDIACOM Tbk	S		B	S	S	S	507	513	528	537
10	HEXA	HEXINDO ADIPERKASA Tbk	B	B	B	S	S	S	4,077	4,113	4,173	4,197
12	JTPE	JASUINDO TIGA PERKASA Tbk	B	S	B	S	S	S	302	302	302	302
13	LTLS	LAUTAN LUAS Tbk	S	B	B	S	S	S	475	481	491	495

No	Kode	Perdagangan dan Jasa	MACD	FS	SS	RSI	StochRSI	CCI	S2	S1	R1	R2
1	MPPA	MATAHARI PUTRA PRIMA Tbk	B	B	B	S	B	B	613	627	657	673
2	MNCN	MEDIA NUSANTARA CITRA Tbk	B		S	B	B	B	1,777	1,788	1,818	1,837
4	SDPC	MILLENNIUM P. INTERNATIONAL Tbk	B		B	S	S	S	111	116	127	133
5	MAPI	MITRA ADIPERKASA Tbk	S	B	B	B	B	B	5,917	6,108	6,408	6,517
6	MICE	MULTI INDOCITRA Tbk	S	S	S	S	S	B	368	384	432	464
7	MLPL	MULTIPOLAR Tbk	B	B	BB	B	B	B	189	199	215	221
8	PANR	PANORAMA SENTRAWISATA Tbk	B		B	S	S	S	660	660	660	660
9	RALS	RAMAYANA LESTARI SENTOSA Tbk	S	S	S	S	S	S	898	922	987	1,028
11	AMRT	SUMBER ALFARIA TRIDAYA Tbk	B	S		B	S	B	653	667	687	693
12	SCMA	SURYA CITRA MEDIA Tbk	B	B	B	S	B	B	2,200	2,280	2,430	2,500
13	TMPO	TEMPO INTI MEDIA Tbk	B		S	B	B	B	186	192	206	214
14	TURI	TUNAS RIDEAN Tbk	B	B	B	S	S	S	1,100	1,100	1,100	1,100
15	UNTR	UNITED TRACTORS Tbk	B		S	B	B	B	29,033	29,567	30,417	30,733

Nb	Kode	Properti dan Real Estat	MACD	FS	SS	RSI	StochRSI	CCI	S2	S1	R1	R2
1	ADHI	ADHI KARYA (PERSERO) Tbk	B	B	B	B	B	B	2,147	2,183	2,243	2,267
2	APLN	AGUNG PODOMORO LAND Tbk	B	S	S	S	S	S	220	222	228	232
3	ASRI	ALAM SUTERA REALTY Tbk			B	B	B	B	298	310	330	338
4	BSDE	BUMI SERPONG DAMAI Tbk	S		B	B	B	B	1,733	1,762	1,807	1,823
5	CTRA	CIPUTRA DEVELOPMENT Tbk	S	B	B	S	S	S	1,002	1,018	1,048	1,062
8	COWL	COWELL DEVELOPMENT Tbk	B	B		B	B	B	1,230	1,235	1,245	1,250
9	DILD	INTILAND DEVELOPMENT Tbk	B		B	S	S	S	398	400	404	406
10	KIJA	KAWASAN INDUSTRI JABABEKA Tbk	S		B	S	B	B	309	313	321	325
11	LPCK	LIPPO CIKARANG Tbk	B	S	B	S	S	S	4,243	4,317	4,507	4,623
12	LPKR	LIPPO KARAWACI Tbk	S		B	B	B	B	682	698	723	732
14	MDLN	MODERNLAND REALTY Tbk	S			S	S	S	265	271	289	301
16	PWON	PAKUWON JATI Tbk	B	S	B	B	B	B	653	682	732	753
17	PTPP	PP (PERSERO) Tbk	S	B	B	S	S	S	2,943	2,987	3,097	3,163
18	BKSL	SENTUL CITY Tbk	B	S	S	S	S	S	91	91	93	95
19	SMRA	SUMMARECON AGUNG Tbk	S	S	S	S	S	S	947	963	1,008	1,037
20	SSIA	SURYA SEMESTA INTERNUSA Tbk	B		B	B	B	B	658	672	702	718
21	TOTL	TOTAL BANGUN PERSADA Tbk	S	BB	B	S	S	S	690	700	720	730
22	WIKA	WIJAYA KARYA (PERSERO) Tbk		B	B	S	B	B	2,007	2,043	2,113	2,147

Last Updated

31-Jul-17

Keterangan: B: Buy, S: Sell,

Perhitungan level *support* dan *resistance* dilakukan menggunakan *pivot point*

FS : Fast Stochastic

SS : Slow Stochastic

RSI : Relative Strength Index

StochRSI : Stochastic RSI

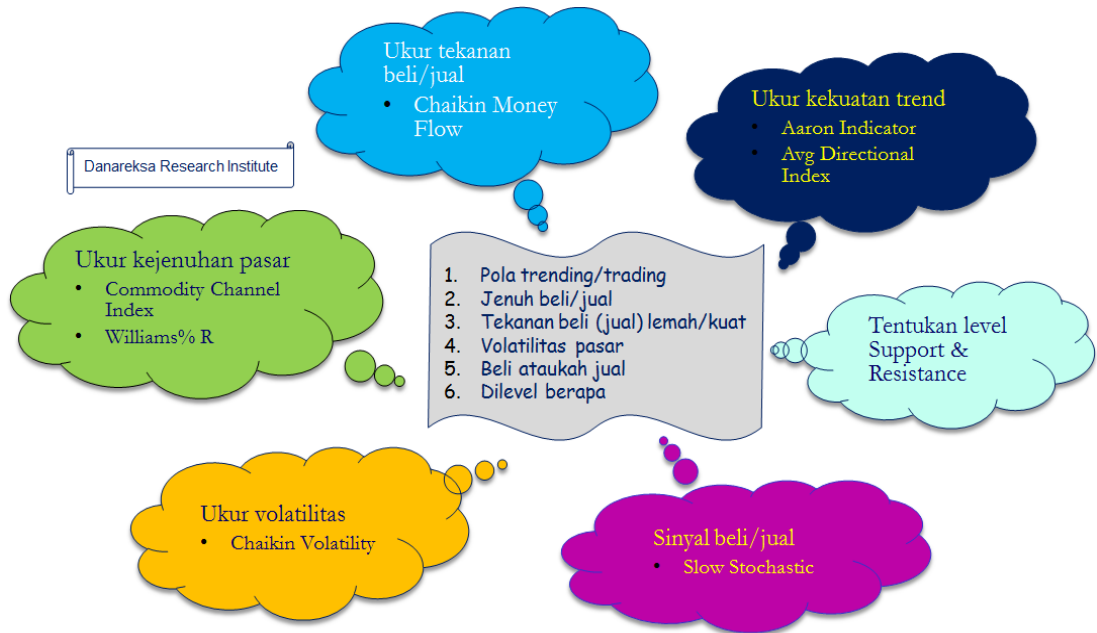
CCI : Commodity Channel Index

S : Support

R : Resistance

Analisa cermat, investasi aktif, dan terus nikmati *return* Anda

Analisis Teknikal Lebih Cepat



Disclaimer:

The information contained in this report has been taken from sources which we deem reliable. However, none of Danareksa Research Institute and/or its affiliated companies and/or their respective employees and/or agents makes any representation or warranty (express or implied) or accepts any responsibility or liability as to, or in relation to, the accuracy or completeness of the information and opinions contained in this report or as to any information contained in this report or any other such information or opinions remaining unchanged after the issue hereof. We have no responsibility to update this report in respect of events and circumstances occurring after the date of this report. We expressly disclaim any responsibility or liability (express or implied) of Danareksa Research Institute and/or its affiliated companies and/or their respective employees and/or agents whatsoever and howsoever arising (including, without limitation for any claims, proceedings, actions, suits, losses, expenses, damages or costs) which may be brought against or suffered by any person as a result of acting in reliance upon the whole or any part of the contents of this report and neither Danareksa Research Institute and/or its affiliated companies and/or their respective employees and/or agents accepts liability for any errors, omissions or mis-statements, negligent or otherwise, in this report and any liability in respect of this report or any inaccuracy herein or omission herefrom which might otherwise arise is hereby expressly disclaimed.

Accordingly, none of Danareksa Research Institute and/or its affiliated companies and/or their respective employees and/or agents shall be liable for any direct, indirect or consequential loss or damage suffered by any person as a result of relying on any statement or omission in any information contained in this report. This report is prepared for general circulation. It does not have regard to the specific person who may receive this report.