

MARKET SCREEN

19 Desember 2018

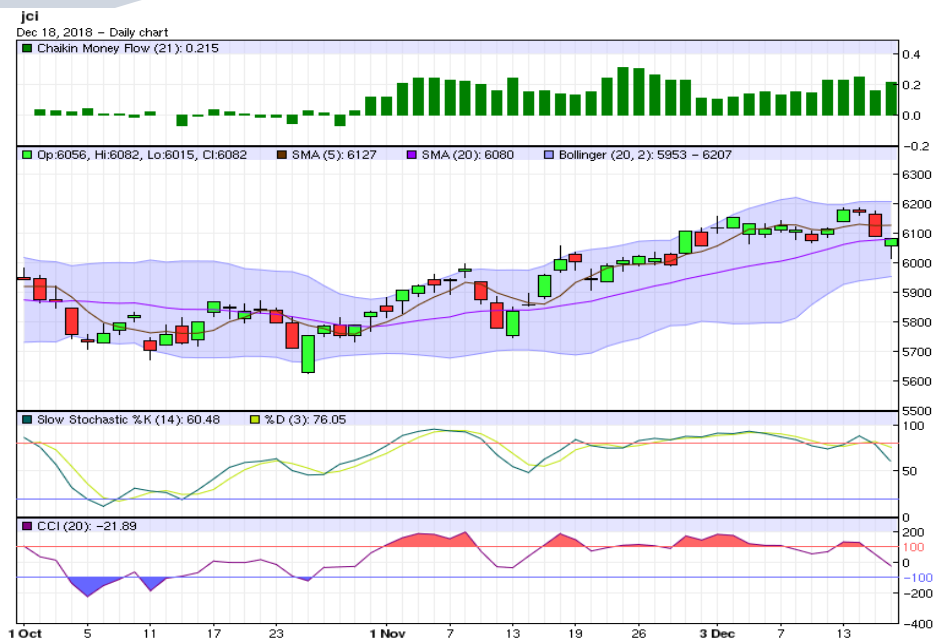
Periode Minor (1-5 hari) : Melemah
Periode Intraday : Melemah
Support-Resistance : 5,992.4 - 6,126.6

Saham yang layak dicermati

UNVR, BNII, BBNI, BNLI, AGRO, BJBR, BWPT, LSIP, TBLA, ASGR, RALS, DILD, TOTL, KIJA, KPIG

Perkembangan Terkini

- Bursa Asia memerah menyusul koreksi yang terjadi dibursa AS sebelumnya. Sentimen negatif sinyal perlambatan ekonomi global dan penantian investor atas FOMC Desember, mendorong tekanan dipasar. IHSG sendiri melemah 0,12 persen kelevel 6.081,87.
- Sementara itu, bursa AS bergerak flat pada perdagangan lalu. Indeks saham Dow Jones (+0,35%) dan S&P 500 (+0,01%) masing-masing bergerak kelevel 23.675,64 dan 2.546,16. Koreksi harga minyak global dan spekulasi akan keputusan The Fed membuat pergerakan indeks saham cenderung terbatas.
- Dari sisi ekonomi AS, pembangunan rumah baru (*housing starts*) dibulan November tumbuh 3,2 persen mom (-3,6% yoy) kelevel 1,256 juta unit, melebihi proyeksi pasar yaitu turun 0,2 persen mom. Pembangunan rumah tapak menurun, sementara pembangunan apartemen mengalami perbaikan. Selanjutnya, indikator izin mendirikan bangunan (*building permits*) tumbuh 5% mom kelevel 1,328 juta unit (*seasonally adjusted annual rate*).
- Mayoritas bursa Asia pagi ini dibuka melemah. Harga minyak Brent (WTI) naik kelevel USD 56,26 (USD 46,40) perbarell, dan harga emas menguat kelevel USD 1.254,50/troy ounce.



Pola Indikator Teknikal

- Aaron Up turun diatas Aaron Down, sementara indikator ADX memperlihatkan sinyal indeks bergerak trading melemah.
- Chaikin Volatility naik dan trend Bollinger Bands Width menurun. Volatilitas pasar meningkat dan rentang pergerakan harga menyempit.
- Indikator CCI dan Williams%R keluar area jenuh beli, sebagai indikasi potensi indeks melemah dalam jangka pendek.
- Slow Stochastic %K memotong kebawah indikator pemicunya, %D diarea jenuh beli, yang menunjukkan potensi indeks melemah dalam jangka pendek.
- Indikator Chaikin Money Flow diatas nol, dengan dominasi tekanan beli kategori semi kuat.
- Artinya secara teknikal, diperiode menengah (1-5 hari kedepan) pasar diprediksi **melemah**. Sedangkan untuk hari ini, indeks diperkirakan bergerak **melemah**.

Seleksi Saham, 19 Desember 2018

Panduan Penggunaan

- ✓ Tabel ini berguna untuk menyeleksi saham-saham yang menarik untuk diperdagangkan hari ini, berdasarkan sinyal dari sejumlah indikator teknikal seperti Fast Stochastic, Slow Stochastic, RSI, dan Stoch RSI.
- ✓ Fokuskan analisis Anda pada saham-saham yang memberikan sinyal sama dan terbanyak, baik (B) atau (S). Perhatikan juga saham-saham dengan indikator utama Fast Stochastic (FS), Slow Stochastic (SS) yang menunjukkan sinyal (B) atau (S) secara bersamaan.
- ✓ Sebelum melakukan aksi beli atau jual, Anda wajib melakukan analisis teknikal untuk saham yang sudah dipilih sebelumnya. Meskipun indikator teknikal suatu saham memberikan banyak sinyal beli (B), bukan berarti posisi beli atau potensi kenaikan yang mutlak terjadi. Anda tetap diwajibkan menganalisis kondisi dan timing pergerakan saham tersebut, dengan analisis teknikal.
- ✓ Rentang pergerakan harga *support resistance* harian ini dihitung dengan menggunakan metode pivot point dan data input harian.
- ✓ Informasi ini juga bisa Anda dapatkan di website dmia.danareksaonline.com.

	Kode	Aneka Industri	MACD	FS	SS	RSI	StochRSI	CCI	S2	S1	R1	R2
1	ASII	ASTRA INTERNATIONAL Tbk	S			B	S	B	8,142	8,258	8,433	8,492
2	AUTO	ASTRA OTOPARTS Tbk		S		S	S	S	1,503	1,517	1,547	1,563
3	GJTL	GAJAH TUNGGAL Tbk	S	B	S	S	S	S	603	612	627	633
4	MYRX	HANSON INTERNATIONAL Tbk	S	S	S	S	S	S	108	109	112	114
5	IMAS	INDOMOBIL SUKSES INTERNASIONAL Tbk	S	S	S	S	S	S	1,983	2,017	2,067	2,083
7	KBLI	KMI Wire and Cable Tbk	S	B	S	S	S	S	222	226	232	234
8	MASA	MULTISTRADA ARAH SARANA TBK	S		S	B	S	B	647	683	743	767
9	PBRX	PAN BROTHERS Tbk				S	S	S	502	513	543	562
10	ADMG	POLYCHEM INDONESIA Tbk	B			S	S	S	305	309	315	317
13	SMSM	SELAMAT SEMPURNA Tbk	S	S	S	S	S	S	1,330	1,345	1,375	1,390

	Kode	Industri Barang Konsumsi	MACD	FS	SS	RSI	StochRSI	CCI	S2	S1	R1	R2
1	ADES	AKASHA WIRA INTERNATIONAL Tbk		S	S	S	S	S	903	907	917	923
3	GGRM	GUDANG GARAM Tbk	S	S	S	S	S	S	76,883	78,767	81,767	82,883
4	HMSP	HANJAYA MANDALA SAMPOERNA Tbk	B	S	S	S	S	S	3,563	3,607	3,677	3,703
5	ICBP	INDOFOOD CBP SUKSES MAKMUR Tbk	B	S	S	S	S	S	9,900	9,975	10,175	10,300
6	INDF	INDOFOOD SUKSES MAKMUR Tbk	B			B	B	B	6,725	6,900	7,200	7,325
7	KLBF	KALBE FARMA Tbk	S	B		S	S	S	1,410	1,435	1,480	1,500
8	KDSI	KEDAWUNG SETIA INDUSTRIAL Tbk	B	S		S	S	S	788	792	802	808
9	KAEF	KIMIA FARMA (PERSERO) Tbk	B	S		S	S	S	2,617	2,643	2,723	2,777
10	MYOR	MAYORA INDAH Tbk	B	S	S	S	S	S	2,467	2,533	2,653	2,707
11	ROTI	NIPPON INDOSARI CORPINDO Tbk	B		S	B	B	B	1,193	1,197	1,202	1,203
13	TSPC	TEMPO SCAN PACIFIC Tbk	B		S	S	S	S	1,383	1,387	1,392	1,393
15	ULTJ	ULTRAJAYA MILK IND AND TRDG CO	B		B	S	S	S	1,122	1,128	1,143	1,152
16	UNVR	UNILEVER INDONESIA Tbk	B	S	S	B	B	B	42,217	43,083	44,408	44,867

	Kode	Industri Kimia	MACD	FS	SS	RSI	StochRSI	CCI	S2	S1	R1	R2
1	ALMI	ALUMINDO LIGHT METAL INDUSTRY Tbk	S	S	S	S	S	S	383	387	397	403
2	ARNA	ARWANA CITRAMULIA Tbk	S		S	B	S	B	401	407	415	417
5	BTON	BETONJAYA MANUNGGAL Tbk	B	B	B	S	B	B	224	230	240	244
6	BUDI	BUDI STARCH AND SWEETENER Tbk	B	S	S	S	S	S	95	96	98	99
8	TPIA	CHANDRA ASRI PETROCHEMICAL Tbk	B			S	S	S	5,242	5,308	5,508	5,642
9	CPIN	CHAROEN POKPHAND INDONESIA Tbk	B		B	S	S	S	6,583	6,667	6,917	7,083
10	EKAD	EKADHARMA INTERNATIONAL Tbk	S	B	B	B	B	B	825	840	865	875
12	GDST	GUNAWAN DIANJAYA STEEL Tbk	B	BB	BB	S	S	S	89	93	100	103
13	SMCB	HOLCIM INDONESIA Tbk	S			S	S	S	1,837	1,843	1,858	1,867
14	INKP	INDAH KIAT PULP AND PAPER Tbk	B	B	B	S	S	S	11,092	11,233	11,658	11,942
16	INTP	INDOCEMENT TUNGGAL PRAKARSA Tbk	S	S	S	S	S	S	19,167	19,258	19,508	19,667
17	IPOL	INDOPOLY SWAKARSA INDUSTRY Tbk	B	S		S	S	S	87	88	90	91
18	JPFA	JAPFA COMFEED INDONESIA Tbk		S	S	S	S	S	1,940	2,010	2,200	2,320
20	MAIN	MALINDO FEEDMILL Tbk		S	S	S	S	S	1,192	1,218	1,283	1,322
21	TKIM	PABRIK KERTAS TJWI KIMIA Tbk	S	S		S	S	S	10,275	10,500	10,975	11,225
22	SMGR	SEMEN INDONESIA (PERSERO) Tbk	S	S	S	S	S	S	11,167	11,283	11,533	11,667

No	Kode	Industri Keuangan	MACD	FS	SS	RSI	StochRSI	CCI	S2	S1	R1	R2
1	ADMF	ADIRA DINAMIKA MULTI FINANCE Tbk	S	S	S	S	S	S	8,292	8,333	8,458	8,542
3	INPC	BANK ARTHA GRAHA INTERNASIONAL Tbk	S		S	S	S	S	60	60	61	62
4	BBKP	BANK BUKOPIN Tbk	B	S		S	S	S	272	274	280	284
5	BBCA	BANK CENTRAL ASIA Tbk	S	S	S	S	S	S	24,592	24,958	25,633	25,942
6	BNGA	BANK CIMB NIAGA Tbk		S	S	S	S	S	868	877	897	908
7	BDMN	BANK DANAMON INDONESIA Tbk	S			S	S	S	7,250	7,275	7,325	7,350
8	BNII	BANK INTERNASIONAL INDONESIA Tbk		B	B	B	B	B	203	205	209	211
9	BJBR	BANK JABAR BANTEN Tbk	B		B	B	B	B	2,017	2,073	2,193	2,257
10	BMRI	BANK MANDIRI (PERSERO) Tbk	S	S	S	S	S	S	7,217	7,283	7,383	7,417
11	BBNI	BANK NEGARA INDONESIA Tbk	S		B	B	S	B	8,408	8,517	8,692	8,758
12	PNBN	BANK PAN INDONESIA Tbk	S	S	S	S	S	S	1,042	1,073	1,123	1,142
13	BNLI	BANK PERMATA Tbk	B	B	B	B	B	B	562	593	643	662
14	BBRI	BANK RAKYAT INDONESIA (PERSERO) Tbk	S	S	S	B	S	B	3,517	3,573	3,663	3,697
15	AGRO	BANK RAKYAT INDONESIA AGRONIAGA Tbk	B	S	B	S	S	S	309	313	323	329

No	Kode	Industri Keuangan	MACD	FS	SS	RSI	StochRSI	CCI	S2	S1	R1	R2
1	BSIM	BANK SINAR MAS Tbk		S	B	S	S	S	552	558	568	572
2	BBTN	BANK TABUNGAN NEGARA (PERSERO) Tbk	S	S	S	B	S	B	2,490	2,550	2,650	2,690
3	BTPN	BANK TABUNGAN PANSIUNAN NASIONAL Tbk	B	S		S	S	S	3,437	3,443	3,463	3,477
4	BVIC	BANK VICTORIA INTERNATIONAL Tbk	B	S	B	S	S	S	168	169	171	172
5	BFIN	BFI FINANCE INDONESIA Tbk	B		B	B	B	B	640	650	665	670
6	CFIN	CLIPAN FINANCE INDONESIA Tbk	S		S	S	S	S	289	297	311	317
7	KREN	KRESNA GRAHA SEKURINDO Tbk	S	S	S	S	S	S	622	628	638	642
8	MFIN	MANDALA MULTIFINANCE Tbk		S	S	S	S	S	810	820	850	870
10	PNLF	PANIN FINANCIAL Tbk	S	B	S	S	S	S	270	274	280	282
11	PANS	PANIN SEKURITAS Tbk	S	B		S	S	S	1,307	1,323	1,368	1,397
12	PNIN	PANINVEST Tbk	S	S	S	S	S	S	1,040	1,045	1,055	1,060
14	VRNA	VERENA MULTI FINANCE Tbk	S			S	S	S	109	111	118	123
15	WOMF	WAHANA OTTOMITRA MULTIARTHA Tbk	B		B	S	S	S	299	303	311	315

No	Kode	Infrastruktur	MACD	FS	SS	RSI	StochRSI	CCI	S2	S1	R1	R2
1	CMNP	CITRA MARGA NUSAPHALA PERSADA T		S	S	S	S	S	1,323	1,337	1,372	1,393
2	JSMR	JASA MARGA (PERSERO) Tbk	B	S	S	S	S	S	4,240	4,320	4,450	4,500
3	WEHA	PANORAMA TRANSPORTASI Tbk			B	B	B	B	147	149	151	151
5	PGAS	PERUSAHAAN GAS NEGARA (PERSERO)	B	S	S	B	B	B	2,023	2,047	2,097	2,123
6	RAJA	RUKUN RAHARJA Tbk	S	S	S	S	S	S	351	355	365	371
7	TLKM	TELEKOMUNIKASI INDONESIA Tbk	S		B	S	B	B	3,660	3,700	3,760	3,780
8	TBIG	TOWER BERSAMA INFRASTRUCTURE T	B	S		S	S	S	3,627	3,703	3,853	3,927
9	TRAM	TRADA MARITIME Tbk	B	S		S	S	S	151	157	166	169
10	WINS	WINTERMAR OFFSHORE MARINE Tbk	S	B		S	S	S	197	207	225	233
11	EXCL	XL Axiata Tbk	B	B	B	S	B	B	1,875	1,905	1,950	1,965

No	Kode	Pertambangan	MACD	FS	SS	RSI	StochRSI	CCI	S2	S1	R1	R2
1	ADRO	ADARO ENERGY Tbk	B	S		S	S	S	1,213	1,227	1,262	1,283
2	ANTM	ANEKA TAMBANG Tbk	B		S	B	B	B	693	722	772	793
3	CTTH	CITATAH Tbk	B		B	S	S	S	107	110	115	117
4	ENRG	ENERGI MEGA PERSADA Tbk	S	B		S	S	S	49	53	62	67
6	HRUM	HARUM ENERGY Tbk	B	S		S	S	S	1,423	1,442	1,487	1,513
7	ITMG	INDO TAMBANGRAYA MEGAH Tbk	B	S	S	S	S	S	19,333	19,667	20,192	20,383
8	MEDC	MEDCO ENERGI INTERNASIONAL Tbk	B	S	S	S	S	S	662	668	688	702
9	MITI	MITRA INVESTINDO Tbk	B			S	S	S	50	50	50	50
12	KKGI	RESOURCE ALAM INDONESIA Tbk	S			S	S	S	328	332	344	352
13	PTBA	TAMBANG BATUBARA BUKIT ASAM (PERSE	B	S	S	S	S	S	4,130	4,180	4,320	4,410
14	TINS	TIMAH Tbk	B		S	B	B	B	710	730	765	780
15	INCO	VALE INDONESIA Tbk	B	S	S	S	S	B	2,913	2,977	3,087	3,133

No	Kode	Pertanian dan Perkebunan	MACD	FS	SS	RSI	StochRSI	CCI	S2	S1	R1	R2
1	AALI	ASTRA AGRO LESTARI Tbk	B	S	S	S	S	S	11,583	11,767	12,092	12,233
2	BISI	BISI INTERNATIONAL Tbk	S	S	S	S	S	S	1,435	1,445	1,470	1,485
3	BWPT	BW PLANTATION Tbk.	B	B	B	S	S	S	166	169	173	174
4	DSFI	DHARMA SAMUDERA FISHING INDUSTRIES	B		B	B	B	B	100	103	108	110
5	LSIP	PP LONDON SUMATRA INDONESIA Tbk	B	B	B	B	B	B	1,247	1,293	1,363	1,387
7	TBLA	TUNAS BARU LAMPUNG Tbk	B	B	B	B	B	B	825	865	925	945

No	Kode	Perdagangan dan Jasa	MACD	FS	SS	RSI	StochRSI	CCI	S2	S1	R1	R2
1	ACES	ACE HARDWARE INDONESIA Tbk	S	S	S	S	S	S	1,475	1,485	1,505	1,515
2	AKRA	AKR CORPORINDO Tbk	B	S	S	S	S	S	4,027	4,073	4,183	4,247
3	ASGR	ASTRA GRAPHIA Tbk	B	B	B	B	B	B	1,323	1,337	1,357	1,363
4	BUVA	BUKIT ULUWATU VILLA Tbk	S	BB	B	S	S	S	203	209	217	219
5	CSAP	CATUR SENTOSA ADIPRANA Tbk	S	S	S	S	S	S	553	557	567	573
6	CLPI	COLORPAK INDONESIA Tbk	B			S	S	B	620	660	720	740
9	BMTR	GLOBAL MEDIACOM Tbk		S	S	S	S	S	283	289	301	307
10	HEXA	HEXINDO ADIPERKASA Tbk	B	B		S	B	B	2,777	2,783	2,793	2,797
12	JTPE	JASUINDO TIGA PERKASA Tbk	B	S	S	S	S	S	467	477	497	507
13	LTLS	LAUTAN LUAS Tbk	S		B	S	S	S	503	527	562	573

No	Kode	Perdagangan dan Jasa	MACD	FS	SS	RSI	StochRSI	CCI	S2	S1	R1	R2
1	MPPA	MATAHARI PUTRA PRIMA Tbk	S	S	S	S	S	S	158	159	163	166
2	MNCN	MEDIA NUSANTARA CITRA Tbk	S	S	S	S	S	S	705	720	750	765
3	MTDL	METRODATA ELECTRONICS Tbk	S		S	S	S	S	780	790	820	840
5	MAPI	MITRA ADIPERKASA Tbk	S	B	S	S	S	S	768	777	792	798
7	MLPL	MULTIPOLAR Tbk	S	S		S	S	S	71	72	76	79
8	PANR	PANORAMA SENTRAWISATA Tbk	S	B	B	S	S	S	343	349	357	359
9	RALS	RAMAYANA LESTARI SENTOSA Tbk	B	B		B	B	B	1,360	1,380	1,410	1,420
11	AMRT	SUMBER ALFARIA TRIJAYA Tbk	S	S	S	S	S	S	803	817	837	843
12	SCMA	SURYA CITRA MEDIA Tbk	S	S	S	S	S	S	1,858	1,877	1,912	1,928
15	UNTR	UNITED TRACTORS Tbk	B		B	S	B	B	28,158	28,642	29,367	29,608

No	Kode	Properti dan Real Estat	MACD	FS	SS	RSI	StochRSI	CCI	S2	S1	R1	R2
1	ADHI	ADHI KARYA (PERSERO) Tbk	B	S	S	S	S	S	1,598	1,612	1,637	1,648
2	APLN	AGUNG PODOMORO LAND Tbk	S	S		S	S	S	146	150	157	160
3	ASRI	ALAM SUTERA REALTY Tbk	S	S	S	S	S	S	316	322	336	344
4	BSDE	BUMI SERPONG DAMAI Tbk	S	S	S	S	S	S	1,213	1,227	1,257	1,273
5	CTRA	CIPUTRA DEVELOPMENT Tbk	S	B	S	S	S	B	937	958	998	1,017
8	COWL	COWELL DEVELOPMENT Tbk	B	S	S	S	S	S	409	411	417	421
9	DILD	INTILAND DEVELOPMENT Tbk	B	S	B	S	S	S	310	310	310	310
10	KJIA	KAWASAN INDUSTRI JABABEKA Tbk	B	S	B	S	S	S	243	247	253	255
11	LPCK	LIPPO CIKARANG Tbk	S	B	S	S	S	S	1,470	1,485	1,510	1,520
12	LPKR	LIPPO KARAWACI Tbk		S	S	S	S	S	246	250	260	266
13	KPIG	MNC LAND Tbk	B		B	S	S	S	128	132	137	138
14	MDLN	MODERNLAND REALTY Tbk	B		S	S	S	S	214	216	220	222
16	PWON	PAKUWON JATI Tbk	S	S		S	S	S	585	595	615	625
17	PTPP	PP (PERSERO) Tbk	B	S	S	S	S	S	1,873	1,917	1,987	2,013
18	BKSL	SENTUL CITY Tbk	B	S		S	S	S	113	115	118	119
19	SMRA	SUMMARECON AGUNG Tbk	S	S	S	S	S	S	763	782	832	863
20	SSIA	SURYA SEMESTA INTERNUSA Tbk	B		B	S	S	S	466	470	478	482
21	TOTL	TOTAL BANGUN PERSADA Tbk	B	B	B	S	S	S	552	558	568	572
22	WIKA	WIJAYA KARYA (PERSERO) Tbk	B		S	B	B	B	1,618	1,667	1,742	1,768

Keterangan: **B: Buy, S: Sell,**

Perhitungan level *support* dan *resistance* dilakukan menggunakan *pivot point*

FS : Fast Stochastic

SS : Slow Stochastic

RSI : Relative Strength Index

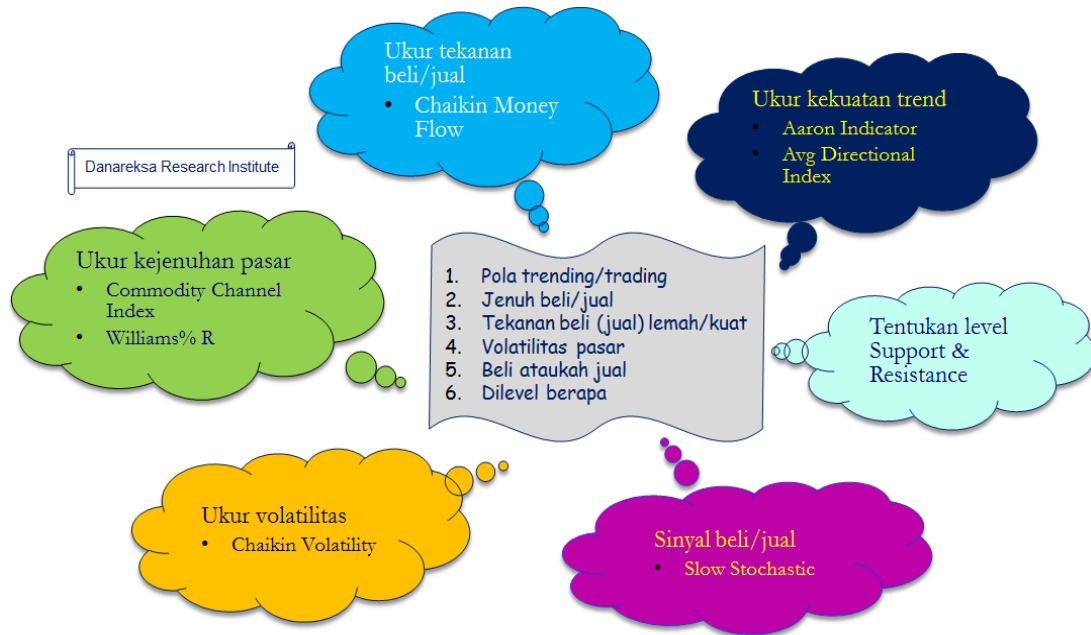
StochRSI : Stochastic RSI

CCI : Commodity Channel Index

S : Support

R : Resistance

Analisis Teknikal Lebih Cepat



Disclaimer:

The information contained in this report has been taken from sources which we deem reliable. However, none of Danareksa Research Institute and/or its affiliated companies and/or their respective employees and/or agents makes any representation or warranty (express or implied) or accepts any responsibility or liability as to, or in relation to, the accuracy or completeness of the information and opinions contained in this report or as to any information contained in this report or any other such information or opinions remaining unchanged after the issue hereof. We have no responsibility to update this report in respect of events and circumstances occurring after the date of this report. We expressly disclaim any responsibility or liability (express or implied) of Danareksa Research Institute and/or its affiliated companies and/or their respective employees and/or agents whatsoever and howsoever arising (including, without limitation for any claims, proceedings, actions, suits, losses, expenses, damages or costs) which may be brought against or suffered by any person as a result of acting in reliance upon the whole or any part of the contents of this report and neither Danareksa Research Institute and/or its affiliated companies and/or their respective employees and/or agents accepts liability for any errors, omissions or mis-statements, negligent or otherwise, in this report and any liability in respect of this report or any inaccuracy herein or omission herefrom which might otherwise arise is hereby expressly disclaimed.

Accordingly, none of Danareksa Research Institute and/or its affiliated companies and/or their respective employees and/or agents shall be liable for any direct, indirect or consequential loss or damage suffered by any person as a result of relying on any statement or omission in any information contained in this report. This report is prepared for general circulation. It does not have regard to the specific person who may receive this report.