

MARKET SCREEN

18 Desember 2018

Periode Minor (1-5 hari) : Menguat

Periode Intraday : Melemah

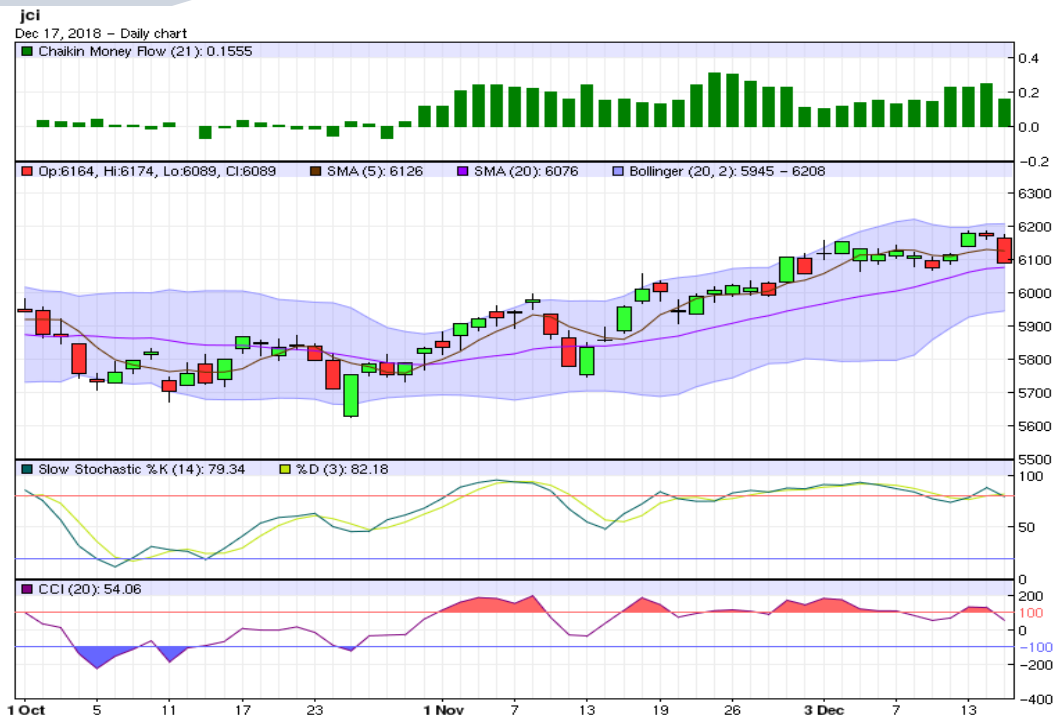
Support-Resistance : 6,032.7 - 6,202.5

Saham yang layak dicermati

ICBP, KAEF, ULTJ, GDST, INKP, BNII, BJBR, BNLI, AGRO, LSIP, ASGR, DILD, KPIG, SSIA, TOTL

Perkembangan Terkini

- IHSG terkoreksi 1,31 persen kelevel 6.089,31 ditengah penutupan bursa Asia yang bervariasi awal pekan ini. Sentimen negatif domestik datang dari rilis terbaru kinerja perdagangan luar negeri Indonesia dibulan November 2018. Nilai ekspor (-6,7% mom, -3,2% yoy) dan impor (-4,5% mom, +11,7% yoy) masing-masing mencapai USD 14,8 miliar dan USD 16,9 miliar, yang membawa defisit perdagangan melebar menjadi USD 2,04 miliar dari USD 1,77 miliar dibulan sebelumnya. Defisit dibulan November tercatat lebih besar dari median konsensus ekonom yaitu defisit USD 735 juta.
- Sementara itu, bursa AS kembali terjungkal pada perdagangan lalu. Indeks saham Dow Jones (-2,11%) dan S&P 500 (-2,08%) masing-masing bergerak kelevel 23.592,98 dan 2.545,94. Jelang FOMC Desember 2018, para pelaku pasar cenderung melakukan aksi jual yang mendorong indeks S&P 500 melemah hingga 4 persen ditahun ini.
- Dari sisi ekonomi AS, indikator sentimen pengembang perumahan-National Association of Home Builders/Wells Fargo Housing Market Index (HMI) dibulan Desember turun kelevel 56 dari level 60 dibulan sebelumnya. Perkembangan ini menunjukkan turunnya optimisme pengembang perumahan AS atas daya beli konsumen atas rumah diperiode mendatang, menyusul suku bunga yang merangkak naik. Indikator NAHB diatas level 50 mengindikasikan optimisme atas kondisi pasar perumahan AS.
- Mayoritas bursa Asia pagi ini dibuka melemah. Harga minyak Brent (WTI) turun kelevel USD 59,61 (USD 49,36) perbarell, dan harga emas melemah kelevel USD 1.250,50/troy ounce.



Pola Indikator Teknikal

- Aaron Up turun diatas Aaron Down, sementara indikator ADX memperlihatkan sinyal indeks bergerak trading melemah.
- Chaikin Volatility naik dan trend Bollinger Bands Width menurun. Volatilitas pasar meningkat dan rentang pergerakan harga menyempit.
- Indikator CCI dan Williams%R keluar area jenuh beli, sebagai indikasi potensi indeks melemah dalam jangka pendek.
- Slow Stochastic %K memotong kebawah indikator pemicunya, %D diarea jenuh beli, yang menunjukkan potensi indeks melemah dalam jangka pendek.
- Indikator Chaikin Money Flow diatas nol, dengan dominasi tekanan beli kategori semi kuat.
- Artinya secara teknikal, diperiode menengah (1-5 hari kedepan) pasar diprediksi **menguat**. Sedangkan untuk hari ini, indeks diperkirakan bergerak **melemah**.

Seleksi Saham, 18 Desember 2018

Panduan Penggunaan

- ✓ Tabel ini berguna untuk menyeleksi saham-saham yang menarik untuk diperdagangkan hari ini, berdasarkan sinyal dari sejumlah indikator teknikal seperti Fast Stochastic, Slow Stochastic, RSI, dan Stoch RSI.
- ✓ Fokuskan analisis Anda pada saham-saham yang memberikan sinyal sama dan terbanyak, baik (B) atau (S). Perhatikan juga saham-saham dengan indikator utama Fast Stochastic (FS), Slow Stochastic (SS) yang menunjukkan sinyal (B) atau (S) secara bersamaan.
- ✓ Sebelum melakukan aksi beli atau jual, Anda wajib melakukan analisis teknikal untuk saham yang sudah dipilih sebelumnya. Meskipun indikator teknikal suatu saham memberikan banyak sinyal beli (B), bukan berarti posisi beli atau potensi kenaikan yang mutlak terjadi. Anda tetap diwajibkan menganalisis kondisi dan timing pergerakan saham tersebut, dengan analisis teknikal.
- ✓ Rentang pergerakan harga *support resistance* harian ini dihitung dengan menggunakan metode pivot point dan data input harian.
- ✓ Informasi ini juga bisa Anda dapatkan di website dmia.danareksaonline.com.

	Kode	Aneka Industri	MACD	FS	SS	RSI	StochRSI	CCI	S2	S1	R1	R2
1	ASII	ASTRA INTERNATIONAL Tbk	S		B	S	S	S	8,133	8,217	8,417	8,533
2	AUTO	ASTRA OTOPARTS Tbk	B		B	S	S	S	1,482	1,513	1,588	1,632
3	GJTL	GAJAH TUNGGAL Tbk	S	S	S	S	S	S	615	620	630	635
4	MYRX	HANSON INTERNATIONAL Tbk	S	S	S	S	S	S	107	108	112	115
5	IMAS	INDOMOBIL SUKSES INTERNASIONAL Tbk		S	S	S	S	S	1,950	2,000	2,100	2,150
7	KBLI	KMI Wire and Cable Tbk	S		S	S	S	S	225	227	235	241
8	MASA	MULTISTRADA ARAH SARANA TBK	S	S	S	S	S	S	683	692	717	733
9	PBRX	PAN BROTHERS Tbk	B			S	S	S	537	543	558	567
10	ADMG	POLYCHEM INDONESIA Tbk	B	S	BB	S	S	S	304	308	316	320
13	SMSM	SELAMAT SEMPURNA Tbk	S	S		S	S	S	1,352	1,363	1,388	1,402

	Kode	Industri Barang Konsumsi	MACD	FS	SS	RSI	StochRSI	CCI	S2	S1	R1	R2
1	ADES	AKASHA WIRA INTERNATIONAL Tbk	B	S		S	S	S	887	903	933	947
3	GGRM	GUDANG GARAM Tbk	S			S	S	S	78,967	80,058	82,683	84,217
4	HMSP	HANJAYA MANDALA SAMPOERNA Tbk	B		S	S	S	S	3,597	3,633	3,743	3,817
5	ICBP	INDOFOOD CBP SUKSES MAKMUR Tbk	B	S	B	B	B	B	9,875	10,000	10,250	10,375
6	INDF	INDOFOOD SUKSES MAKMUR Tbk	B	S	S	S	S	S	6,825	6,900	7,075	7,175
7	KLBF	KALBE FARMA Tbk	S		B	S	S	S	1,418	1,447	1,512	1,548
8	KDSI	KEDAWUNG SETIA INDUSTRIAL Tbk	B		B	S	B	B	787	803	828	837
9	KAEF	KIMIA FARMA (PERSERO) Tbk	B	S	B	B	B	B	2,600	2,670	2,820	2,900
10	MYOR	MAYORA INDAH Tbk	B	S	S	S	S	S	2,507	2,553	2,643	2,687
11	ROTI	NIPPON INDOSARI CORPINDO Tbk	B	S	S	S	S	S	1,175	1,185	1,200	1,205
13	TSPC	TEMPO SCAN PACIFIC Tbk	B	S	S	S	S	S	1,378	1,387	1,402	1,408
15	ULTJ	ULTRAJAYA MILK IND AND TRDG CO	B	B	B	S	S	S	1,125	1,130	1,145	1,155
16	UNVR	UNILEVER INDONESIA Tbk	B		S	S	S	S	42,700	43,100	44,200	44,900

	Kode	Industri Kimia	MACD	FS	SS	RSI	StochRSI	CCI	S2	S1	R1	R2
1	ALMI	ALUMINDO LIGHT METAL INDUSTRY Tbk	S	S	S	S	S	S	383	387	397	403
2	ARNA	ARWANA CITRAMULIA Tbk	S		S	B	S	B	401	407	415	417
5	BTON	BETONJAYA MANUNGGAL Tbk	B	B	B	S	B	B	224	230	240	244
6	BUDI	BUDI STARCH AND SWEETENER Tbk	B	S	S	S	S	S	95	96	98	99
8	TPIA	CHANDRA ASRI PETROCHEMICAL Tbk	B			S	S	S	5,242	5,308	5,508	5,642
9	CPIN	CHAROEN POKPHAND INDONESIA Tbk	B		B	S	S	S	6,583	6,667	6,917	7,083
10	EKAD	EKADHARMA INTERNATIONAL Tbk	S	B	B	B	B	B	825	840	865	875
12	GDST	GUNAWAN DIANJAYA STEEL Tbk	B	BB	BB	S	S	S	89	93	100	103
13	SMCB	HOLCIM INDONESIA Tbk	S			S	S	S	1,837	1,843	1,858	1,867
14	INKP	INDAH KIAT PULP AND PAPER Tbk	B	B	B	S	S	S	11,092	11,233	11,658	11,942
16	INTP	INDOCEMENT TUNGGAL PRAKARSA Tbk	S	S	S	S	S	S	19,167	19,258	19,508	19,667
17	IPOL	INDOPOLY SWAKARSA INDUSTRY Tbk	B	S		S	S	S	87	88	90	91
18	JPFA	JAPFA COMFEED INDONESIA Tbk		S	S	S	S	S	1,940	2,010	2,200	2,320
20	MAIN	MALINDO FEEDMILL Tbk		S	S	S	S	S	1,192	1,218	1,283	1,322
21	TKIM	PABRIK KERTAS TJIWI KIMIA Tbk	S	S		S	S	S	10,275	10,500	10,975	11,225
22	SMGR	SEMEN INDONESIA (PERSERO) Tbk	S	S	S	S	S	S	11,167	11,283	11,533	11,667

No	Kode	Industri Keuangan	MACD	FS	SS	RSI	StochRSI	CCI	S2	S1	R1	R2
1	ADMF	ADIRA DINAMIKA MULTI FINANCE Tbk	S	S	S	S	S	S	8,025	8,225	8,625	8,825
3	INPC	BANK ARTHA GRAHA INTERNASIONAL Tbk	S	B	S	S	B	B	61	61	62	63
4	BBKP	BANK BUKOPIN Tbk	B		B	S	S	S	275	279	289	295
5	BBCA	BANK CENTRAL ASIA Tbk	S	S	S	S	S	S	25,608	25,717	25,967	26,108
6	BNGA	BANK CIMB NIAGA Tbk	B	S		S	S	S	885	895	915	925
7	BDMN	BANK DANAMON INDONESIA Tbk	S	S	BB	S	S	S	7,208	7,242	7,342	7,408
8	BNII	BANK INTERNASIONAL INDONESIA Tbk	S	B	B	S	S	S	203	205	207	207
9	BJBR	BANK JABAR BANTEN Tbk	B	B	B	B	B	B	1,960	2,020	2,120	2,160
10	BMRI	BANK MANDIRI (PERSERO) Tbk	S	S		S	S	S	7,283	7,342	7,517	7,633
11	BBNI	BANK NEGARA INDONESIA Tbk	S			S	S	S	8,392	8,483	8,633	8,692
12	PNBN	BANK PAN INDONESIA Tbk	S	S	S	S	S	S	1,013	1,062	1,157	1,203
13	BNLI	BANK PERMATA Tbk	B	B	B	B	B	B	533	557	597	613
14	BBRI	BANK RAKYAT INDONESIA (PERSERO) Tbk	S			S	S	S	3,547	3,573	3,653	3,707
15	AGRO	BANK RAKYAT INDONESIA AGRONIAGA Tbk	B		B	B	B	B	314	320	334	342

No	Kode	Industri Keuangan	MACD	FS	SS	RSI	StochRSI	CCI	S2	S1	R1	R2
1	BSIM	BANK SINAR MAS Tbk	S		B	S	S	S	565	565	565	565
2	BBTN	BANK TABUNGAN NEGARA (PERSERO) Tbk	S	S	S	S	S	S	2,503	2,537	2,627	2,683
3	BTPN	BANK TABUNGAN PANSIUNAN NASIONAL Tbk	B		B	S	S	S	3,437	3,453	3,483	3,497
4	BVIC	BANK VICTORIA INTERNATIONAL Tbk	B		B	S	S	S	167	169	174	177
5	BFIN	BFI FINANCE INDONESIA Tbk	B	S	B	S	S	S	635	640	650	655
6	CFIN	CLIPAN FINANCE INDONESIA Tbk	S		S	B	S	B	295	301	313	319
7	KREN	KRESNA GRAHA SEKURINDO Tbk	S	S		S	S	S	625	630	645	655
8	MFIN	MANDALA MULTIFINANCE Tbk	B	S	S	S	S	S	840	845	860	870
10	PNLF	PANIN FINANCIAL Tbk	S	S	S	S	S	S	271	275	283	287
11	PANS	PANIN SEKURITAS Tbk	S		S	S	S	S	1,293	1,317	1,352	1,363
12	PNIN	PANINVEST Tbk	S		S	S	S	S	1,037	1,043	1,063	1,077
14	VRNA	VERENA MULTI FINANCE Tbk	S	B	S	S	S	S	104	110	124	132
15	WOMF	WAHANA OTTOMITRA MULTIARTHA Tbk	B	B	B	B	B	B	297	305	319	325

No	Kode	Infrastruktur	MACD	FS	SS	RSI	StochRSI	CCI	S2	S1	R1	R2
1	CMNP	CITRA MARGA NUSAPHALA PERSADA T	B	S	S	B	S	B	1,340	1,350	1,370	1,380
2	JSMR	JASA MARGA (PERSERO) Tbk	B	S		S	S	S	4,257	4,333	4,553	4,697
3	WEHA	PANORAMA TRANSPORTASI Tbk	S		B	S	S	S	147	148	150	151
5	PGAS	PERUSAHAAN GAS NEGARA (PERSERO)	B	S		S	S	S	2,013	2,037	2,107	2,153
6	RAJA	RUKUN RAHARJA Tbk	S	S	S	S	S	S	355	359	367	371
7	TLKM	TELEKOMUNIKASI INDONESIA Tbk	S		B	S	S	S	3,670	3,690	3,750	3,790
8	TBIG	TOWER BERSAMA INFRASTRUCTURE T	B		B	S	S	S	3,773	3,807	3,907	3,973
9	TRAM	TRADA MARITIME Tbk	B	S	B	S	S	S	157	160	168	173
10	WINS	WINTERMAR OFFSHORE MARINE Tbk	S			S	B	B	218	220	226	230
11	EXCL	XL Axiata Tbk	B	S	B	S	S	S	1,867	1,888	1,933	1,957

No	Kode	Pertambangan	MACD	FS	SS	RSI	StochRSI	CCI	S2	S1	R1	R2
1	ADRO	ADARO ENERGY Tbk	B		B	S	S	S	1,243	1,262	1,297	1,313
2	ANTM	ANEKA TAMBANG Tbk	B	S	S	S	S	S	707	718	753	777
3	CTTH	CITATAH Tbk	B	B	B	S	S	S	110	112	115	116
4	ENRG	ENERGI MEGA PERSADA Tbk			B	S	S	S	60	61	66	70
6	HRUM	HARUM ENERGY Tbk	B		B	S	S	S	1,438	1,467	1,547	1,598
7	ITMG	INDO TAMBANGRAYA MEGAH Tbk	B	S		S	S	S	19,817	19,983	20,483	20,817
8	MEDC	MEDCO ENERGI INTERNASIONAL Tbk	B	S		S	S	S	683	692	717	733
9	MITI	MITRA INVESTINDO Tbk	B			S	S	S	49	50	51	51
12	KKGI	RESOURCE ALAM INDONESIA Tbk	S	B	B	S	S	S	332	340	352	356
13	PTBA	TAMBANG BATUBARA BUKIT ASAM (PERSE	B	S	S	S	S	S	4,243	4,317	4,477	4,563
14	TINS	TIMAH Tbk	B	S	S	S	S	S	718	732	757	768
15	INCO	VALE INDONESIA Tbk	B	S		S	S	S	2,937	2,983	3,113	3,197

No	Kode	Pertanian dan Perkebunan	MACD	FS	SS	RSI	StochRSI	CCI	S2	S1	R1	R2
1	AALI	ASTRA AGRO LESTARI Tbk	B	S	S	B	B	B	11,517	11,733	12,133	12,317
2	BISI	BISI INTERNATIONAL Tbk	S			S	S	S	1,425	1,440	1,485	1,515
3	BWPT	BW PLANTATION Tbk.	B	B	B	B	B	B	164	168	175	178
4	DSFI	DHARMA SAMUDERA FISHING INDUSTRIES	B	S	B	S	S	S	103	103	105	107
5	LSIP	PP LONDON SUMATRA INDONESIA Tbk	B	B	B	B	B	B	1,232	1,263	1,318	1,342
7	TBLA	TUNAS BARU LAMPUNG Tbk	B	B	B	B	B	B	815	835	870	885

No	Kode	Perdagangan dan Jasa	MACD	FS	SS	RSI	StochRSI	CCI	S2	S1	R1	R2
1	ACES	ACE HARDWARE INDONESIA Tbk	S	S	S	B	S	B	1,423	1,462	1,527	1,553
2	AKRA	AKR CORPORINDO Tbk	B		S	S	S	S	4,047	4,123	4,353	4,507
3	ASGR	ASTRA GRAPHIA Tbk	B	B	B	S	S	S	1,327	1,328	1,333	1,337
4	BUVA	BUKIT ULUWATU VILLA Tbk	S	B	B	S	S	B	207	211	217	219
5	CSAP	CATUR SENTOSA ADIPRANA Tbk	S	S	S	S	S	S	543	552	577	593
6	CLPI	COLORPAK INDONESIA Tbk	B			S	S	S	685	690	700	705
9	BMTR	GLOBAL MEDIACOM Tbk	B	S		S	S	S	281	291	315	329
10	HEXA	HEXINDO ADIPERKASA Tbk	B		S	S	S	S	2,723	2,747	2,817	2,863
12	JTPE	JASUINDO TIGA PERKASA Tbk	B	S	S	S	S	S	473	481	495	501
13	LTLS	LAUTAN LUAS Tbk	S		B	S	S	S	523	537	562	573

No	Kode	Perdagangan dan Jasa	MACD	FS	SS	RSI	StochRSI	CCI	S2	S1	R1	R2
1	MPPA	MATAHARI PUTRA PRIMA Tbk		S		S	S	S	159	162	168	171
2	MNCN	MEDIA NUSANTARA CITRA Tbk	S			S	S	S	688	717	792	838
3	MTDL	METRODATA ELECTRONICS Tbk	S		S	B	S	B	810	820	840	850
5	MAPI	MITRA ADIPERKASA Tbk	S	S	S	S	S	S	778	782	792	798
7	MLPL	MULTIPOLAR Tbk	S	S	B	S	S	S	75	76	78	79
8	PANR	PANORAMA SENTRAWISATA Tbk	S	S	S	S	S	S	334	340	358	370
9	RALS	RAMAYANA LESTARI SENTOSA Tbk	B		S	B	B	B	1,267	1,323	1,413	1,447
11	AMRT	SUMBER ALFARIA TRIJAYA Tbk		S	S	S	S	S	803	817	857	883
12	SCMA	SURYA CITRA MEDIA Tbk	S	S	S	S	S	S	1,867	1,888	1,928	1,947
15	UNTR	UNITED TRACTORS Tbk	B		B	S	S	S	28,050	28,375	29,275	29,850

No	Kode	Properti dan Real Estat	MACD	FS	SS	RSI	StochRSI	CCI	S2	S1	R1	R2
1	ADHI	ADHI KARYA (PERSERO) Tbk	B	S	S	S	S	S	1,618	1,632	1,662	1,678
2	APLN	AGUNG PODOMORO LAND Tbk	S		B	S	S	S	154	155	158	160
3	ASRI	ALAM SUTERA REALTY Tbk	S	S		S	S	S	327	333	345	351
4	BSDE	BUMI SERPONG DAMAI Tbk	S			S	S	S	1,215	1,235	1,295	1,335
5	CTRA	CIPUTRA DEVELOPMENT Tbk	S	S	S	S	S	S	918	947	1,007	1,038
8	COWL	COWELL DEVELOPMENT Tbk	B	S		S	S	S	411	413	417	419
9	DILD	INTILAND DEVELOPMENT Tbk	B		B	S	S	S	305	307	311	313
10	KJIA	KAWASAN INDUSTRI JABABEKA Tbk			B	S	S	S	245	247	251	253
11	LPCK	LIPPO CIKARANG Tbk	S	S	S	S	S	S	1,470	1,480	1,505	1,520
12	LPKR	LIPPO KARAWACI Tbk	B			S	S	S	247	251	261	267
13	KPIG	MNC LAND Tbk		B	B	S	S	S	129	132	137	139
14	MDLN	MODERNLAND REALTY Tbk	B		S	B	B	B	213	217	223	225
16	PWON	PAKUWON JATI Tbk	S		B	S	S	S	598	607	627	638
17	PTPP	PP (PERSERO) Tbk	B	S	S	S	S	S	1,922	1,943	1,993	2,022
18	BKSL	SENTUL CITY Tbk	B	S		S	S	S	114	116	119	120
19	SMRA	SUMMARECON AGUNG Tbk		S		S	S	S	785	810	860	885
20	SSIA	SURYA SEMESTA INTERNUSA Tbk	B	B	B	S	S	S	467	473	483	487
21	TOTL	TOTAL BANGUN PERSADA Tbk	B	B	B	B	B	B	555	560	570	575
22	WIKA	WIJAYA KARYA (PERSERO) Tbk	B	S	S	S	S	S	1,638	1,657	1,707	1,738

Keterangan: B: Buy, S: Sell,

Perhitungan level *support* dan *resistance* dilakukan menggunakan *pivot point*

FS : Fast Stochastic

SS : Slow Stochastic

RSI : Relative Strength Index

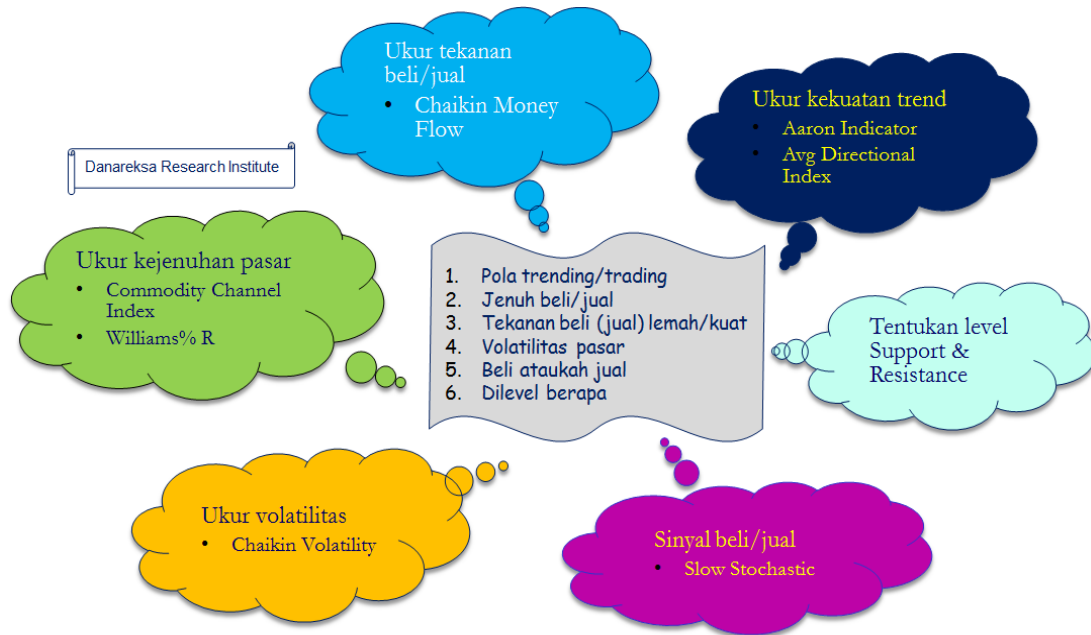
StochRSI : Stochastic RSI

CCI : Commodity Channel Index

S : Support

R : Resistance

Analisis Teknikal Lebih Cepat



Disclaimer:

The information contained in this report has been taken from sources which we deem reliable. However, none of Danareksa Research Institute and/or its affiliated companies and/or their respective employees and/or agents makes any representation or warranty (express or implied) or accepts any responsibility or liability as to, or in relation to, the accuracy or completeness of the information and opinions contained in this report or as to any information contained in this report or any other such information or opinions remaining unchanged after the issue hereof. We have no responsibility to update this report in respect of events and circumstances occurring after the date of this report. We expressly disclaim any responsibility or liability (express or implied) of Danareksa Research Institute and/or its affiliated companies and/or their respective employees and/or agents whatsoever and howsoever arising (including, without limitation for any claims, proceedings, actions, suits, losses, expenses, damages or costs) which may be brought against or suffered by any person as a result of acting in reliance upon the whole or any part of the contents of this report and neither Danareksa Research Institute and/or its affiliated companies and/or their respective employees and/or agents accepts liability for any errors, omissions or mis-statements, negligent or otherwise, in this report and any liability in respect of this report or any inaccuracy herein or omission herefrom which might otherwise arise is hereby expressly disclaimed.

Accordingly, none of Danareksa Research Institute and/or its affiliated companies and/or their respective employees and/or agents shall be liable for any direct, indirect or consequential loss or damage suffered by any person as a result of relying on any statement or omission in any information contained in this report. This report is prepared for general circulation. It does not have regard to the specific person who may receive this report.