

MARKET SCREEN

17 Desember 2018

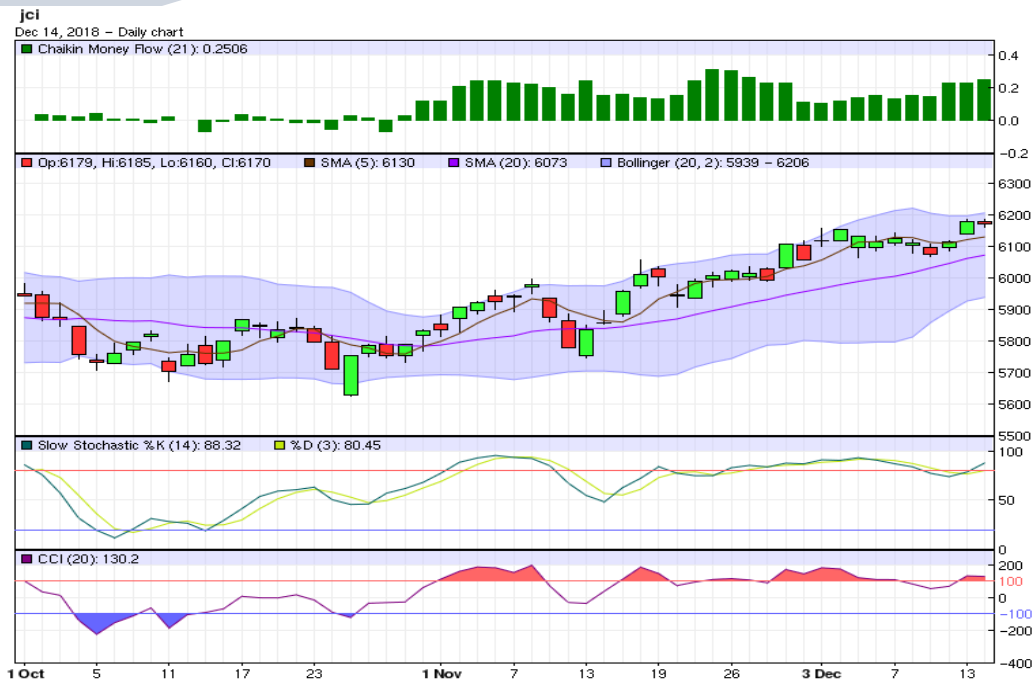
Periode Minor (1-5 hari) : Menguat
Periode Intraday : Melemah
Support-Resistance : 6,146.8 - 6,197.0

Saham yang layak dicermati

ASII, AUTO, ICBP, INDF, KLBK, UNVR, GGRM, SMCB, BBKP, BBRI, BNLI, BMRI, TLKM, TBIG, ADRO, AKRA, UNTR, KIIA, TOTL

Perkembangan Terkini

- Koreksi melanda sebagian besar bursa Asia, tak terkecuali IHSG yang turun tipis 0,13 persen kelevel 6.169,84. Sentimen negatif datang dari rilis sejumlah data ekonomi Tiongkok yang meleset dari ekspektasi pasar. Data National Bureau of Statistics (NBS) menunjukkan bahwa investasi aset tetap Tiongkok ytd tumbuh 5,9% vs 5,8% ekspektasi vs 5,7% diperiode sebelumnya. Penjualan retail Tiongkok pada November meningkat 8,1% yoy vs 8,8% ekspektasi vs 8,6% dibulan sebelumnya.
- Sementara itu, bursa AS terjungkal pada perdagangan Jumat lalu. Indeks saham Dow Jones (-2,02%) dan S&P 500 (-1,91%) masing-masing bergerak kelevel 24.100,51 dan 2.599,95. Rilis data ekonomi Tiongkok dan Eropa yang lebih rendah dari ekspektasi pasar memicu sentimen negatif akan perlambatan ekonomi global kedepan.
- Dari sisi ekonomi AS, penjualan retail dibulan November tumbuh 0,2% mom (+4,2% yoy) menyusul pertumbuhan 1,1% mom (+4,8% yoy) dibulan sebelumnya. Penjualan furniture dan elektronik meningkat, sementara penjualan BBM cenderung turun. Selanjutnya, output produksi industri dibulan November tumbuh 0,6% mom, lebih baik dari bulan sebelumnya (-0,2% mom) dan ekspektasi (+0,3% mom). Produksi sektor manufaktur dan utilitas mengalami kenaikan, sedangkan sektor manufaktur relatif stagnan.
- Mayoritas bursa Asia pagi ini dibuka bervariasi. Harga minyak Brent (WTI) naik kelevel USD 60,34 (USD 51,33) perbareil, dan harga emas melemah kelevel USD 1.241,00/troy ounce.



Pola Indikator Teknikal

- Aaron Up dominan diatas Aaron Down, sementara indikator ADX memperlihatkan sinyal indeks bergerak trading menguat.
- Chaikin Volatility dan trend Bollinger Bands Width menurun. Volatilitas pasar menurun dan rentang pergerakan harga menyempit.
- Indikator CCI dan Williams%R masuk ke area jenuh beli, sebagai indikasi potensi indeks menguat dalam jangka pendek.
- Slow Stochastic %K memotong keatas indikator pemicunya, %D diluar area jenuh beli, yang menunjukkan potensi indeks menguat dalam jangka pendek.
- Indikator Chaikin Money Flow diatas nol, dengan dominasi tekanan beli kategori kuat.
- Artinya secara teknikal, diperiode menengah (1-5 hari kedepan) pasar diprediksi **menguat**. Sedangkan untuk hari ini, indeks diperkirakan bergerak **melemah**.

Seleksi Saham, 17 Desember 2018

Panduan Penggunaan

- ✓ Tabel ini berguna untuk menyeleksi saham-saham yang menarik untuk diperdagangkan hari ini, berdasarkan sinyal dari sejumlah indikator teknikal seperti Fast Stochastic, Slow Stochastic, RSI, dan Stoch RSI.
- ✓ Fokuskan analisis Anda pada saham-saham yang memberikan sinyal sama dan terbanyak, baik (B) atau (S). Perhatikan juga saham-saham dengan indikator utama Fast Stochastic (FS), Slow Stochastic (SS) yang menunjukkan sinyal (B) atau (S) secara bersamaan.
- ✓ Sebelum melakukan aksi beli atau jual, Anda wajib melakukan analisis teknikal untuk saham yang sudah dipilih sebelumnya. Meskipun indikator teknikal suatu saham memberikan banyak sinyal beli (B), bukan berarti posisi beli atau potensi kenaikan yang mutlak terjadi. Anda tetap diwajibkan menganalisis kondisi dan timing pergerakan saham tersebut, dengan analisis teknikal.
- ✓ Rentang pergerakan harga *support resistance* harian ini dihitung dengan menggunakan metode pivot point dan data input harian.
- ✓ Informasi ini juga bisa Anda dapatkan di website dmia.danareksaonline.com.

	Kode	Aneka Industri	MACD	FS	SS	RSI	StochRSI	CCI	S2	S1	R1	R2
1	ASII	ASTRA INTERNATIONAL Tbk	S	B	B	S	S	S	8,350	8,400	8,500	8,550
2	AUTO	ASTRA OTOPARTS Tbk	B	B	B	B	S	B	1,543	1,567	1,617	1,643
3	GJTL	GAJAH TUNGGAL Tbk	S		S	S	S	S	620	625	635	640
4	MYRX	HANSON INTERNATIONAL Tbk	S	S	S	S	S	S	108	111	115	116
5	IMAS	INDOMOBIL SUKSES INTERNASIONAL Tbk	B	S	S	S	S	S	2,060	2,080	2,130	2,160
7	KBLI	KMI Wire and Cable Tbk	S	B	S	S	S	S	235	237	239	239
8	MASA	MULTISTRADA ARAH SARANA TBK	S	S	S	B	S	B	698	707	722	728
9	PBRX	PAN BROTHERS Tbk	B			S	S	S	543	547	552	553
10	ADMG	POLYCHEM INDONESIA Tbk	B		BB	S	S	S	307	309	315	319
13	SMSM	SELAMAT SEMPURNA Tbk	S		B	S	S	S	1,312	1,348	1,433	1,482

	Kode	Industri Barang Konsumsi	MACD	FS	SS	RSI	StochRSI	CCI	S2	S1	R1	R2
1	ADES	AKASHA WIRA INTERNATIONAL Tbk	B		B	S	S	S	900	915	940	950
3	GGRM	GUDANG GARAM Tbk	S	B		B	S	B	80,533	81,667	83,967	85,133
4	HMSP	HANJAYA MANDALA SAMPOERNA Tbk	B		S	B	B	B	3,700	3,740	3,810	3,840
5	ICBP	INDOFOOD CBP SUKSES MAKMUR Tbk	B	B	B	B	B	B	9,683	9,892	10,317	10,533
6	INDF	INDOFOOD SUKSES MAKMUR Tbk	B	B	B	B	B	B	6,742	6,908	7,183	7,292
7	KLBF	KALBE FARMA Tbk	S	B	B	S	S	S	1,467	1,478	1,503	1,517
8	KDSI	KEDAWUNG SETIA INDUSTRIAL Tbk	B	B		S	S	S	788	802	822	828
9	KAEF	KIMIA FARMA (PERSERO) Tbk	B		B	S	S	S	2,543	2,637	2,837	2,943
10	MYOR	MAYORA INDAH Tbk	B	S	B	S	S	S	2,560	2,580	2,640	2,680
11	ROTI	NIPPON INDOSARI CORPINDO Tbk	B	S	S	S	S	S	1,182	1,188	1,203	1,212
13	TSPC	TEMPO SCAN PACIFIC Tbk	B			S	S	S	1,385	1,390	1,400	1,405
15	ULTJ	ULTRAJAYA MILK IND AND TRDG CO	B		B	S	B	B	1,127	1,133	1,143	1,147
16	UNVR	UNILEVER INDONESIA Tbk	B	B	B	B	B	B	44,167	44,333	44,658	44,817

	Kode	Industri Kimia	MACD	FS	SS	RSI	StochRSI	CCI	S2	S1	R1	R2
1	ALMI	ALUMINDO LIGHT METAL INDUSTRY Tbk		S	S	B	S	B	378	384	394	398
2	ARNA	ARWANA CITRAMULIA Tbk	S	S	S	S	S	S	401	405	411	413
5	BTON	BETONJAYA MANUNGGAL Tbk	B		BB	S	B	B	215	221	233	239
6	BUDI	BUDI STARCH AND SWEETENER Tbk	B		S	S	S	S	96	96	98	100
8	TPIA	CHANDRA ASRI PETROCHEMICAL Tbk	B			B	B	B	5,233	5,367	5,567	5,633
9	CPIN	CHAROEN POKPHAND INDONESIA Tbk	B	B		B	S	B	6,683	6,842	7,117	7,233
10	EKAD	EKADHARMA INTERNATIONAL Tbk	S	B		S	S	S	825	835	850	855
12	GDST	GUNAWAN DIANJAYA STEEL Tbk		BB	B	S	B	B	89	93	101	105
13	SMCB	HOLCIM INDONESIA Tbk	S	BB	BB	S	S	S	1,832	1,843	1,863	1,872
14	INKP	INDAH KIAT PULP AND PAPER Tbk	B	B	B	S	S	S	11,508	11,692	12,117	12,358
16	INTP	INDOCEMENT TUNGGAL PRAKARSA Tbk	S	S	S	S	S	S	19,092	19,333	19,808	20,042
17	IPOL	INDOPOLY SWAKARSA INDUSTRY Tbk	B		B	S	S	S	87	88	91	93
18	JPFA	JAPFA COMFEED INDONESIA Tbk	B			S	S	S	2,080	2,120	2,230	2,300
20	MAIN	MALINDO FEEDMILL Tbk	B		S	S	S	S	1,215	1,245	1,330	1,385
21	TKIM	PABRIK KERTAS TJIWI KIMIA Tbk	S		BB	S	S	S	10,500	10,725	11,350	11,750
22	SMGR	SEMEN INDONESIA (PERSERO) Tbk	S	S	S	S	S	S	10,875	11,150	11,650	11,875

No	Kode	Industri Keuangan	MACD	FS	SS	RSI	StochRSI	CCI	S2	S1	R1	R2
1	ADMF	ADIRA DINAMIKA MULTI FINANCE Tbk		S		S	S	S	8,533	8,567	8,667	8,733
3	INPC	BANK ARTHA GRAHA INTERNASIONAL Tbk	S	S	S	S	S	S	60	61	62	62
4	BBKP	BANK BUKOPIN Tbk	B	B	B	S	S	S	280	284	294	300
5	BBCA	BANK CENTRAL ASIA Tbk	S	S	S	S	S	S	25,608	25,717	25,917	26,008
6	BNGA	BANK CIMB NIAGA Tbk	B	S	B	S	S	S	900	905	915	920
7	BDMN	BANK DANAMON INDONESIA Tbk	S		BB	S	S	S	7,242	7,283	7,408	7,492
8	BNII	BANK INTERNASIONAL INDONESIA Tbk	S			B	B	B	202	204	208	210
9	BJBR	BANK JABAR BANTEN Tbk		B		B	B	B	2,017	2,043	2,093	2,117
10	BMRI	BANK MANDIRI (PERSERO) Tbk	S		B	S	S	S	7,458	7,517	7,642	7,708
11	BBNI	BANK NEGARA INDONESIA Tbk	S	B	S	B	S	B	8,400	8,500	8,675	8,750
12	PNBN	BANK PAN INDONESIA Tbk	S			S	S	S	1,097	1,123	1,173	1,197
13	BNLI	BANK PERMATA Tbk	B		B	B	B	B	490	525	580	600
14	BBRI	BANK RAKYAT INDONESIA (PERSERO) Tbk	S	B	B	S	S	S	3,620	3,650	3,700	3,720
15	AGRO	BANK RAKYAT INDONESIA AGRONIAGA Tbk	B	B	B	B	B	B	309	317	329	333

No	Kode	Industri Keuangan	MACD	FS	SS	RSI	StochRSI	CCI	S2	S1	R1	R2
1	BSIM	BANK SINAR MAS Tbk	S	B	B	S	S	S	517	543	583	597
2	BBTN	BANK TABUNGAN NEGARA (PERSERO) Tbk			S	S	S	S	2,583	2,617	2,707	2,763
3	BTPN	BANK TABUNGAN PANSIUNAN NASIONAL Tbk	B	B	B	S	S	S	3,450	3,470	3,530	3,570
4	BVIC	BANK VICTORIA INTERNATIONAL Tbk		B		S	B	B	168	171	180	186
5	BFIN	BFI FINANCE INDONESIA Tbk	B	B	B	B	B	B	637	643	653	657
6	CFIN	CLIPAN FINANCE INDONESIA Tbk		S	S	S	S	S	295	301	311	315
7	KREN	KRESNA GRAHA SEKURINDO Tbk	S		B	S	S	S	640	645	655	660
8	MFIN	MANDALA MULTIFINANCE Tbk	B		S	S	S	S	847	848	853	857
10	PNLF	PANIN FINANCIAL Tbk	S	S		S	S	S	277	279	287	293
11	PANS	PANIN SEKURITAS Tbk	S	S	S	S	S	S	1,285	1,310	1,370	1,405
12	PNIN	PANINVEST Tbk		B	S	S	S	S	1,053	1,057	1,062	1,063
14	VRNA	VERENA MULTI FINANCE Tbk	S	S	S	S	S	B	108	111	121	128
15	WOMF	WAHANA OTTOMITRA MULTIARTHA Tbk		B		B	B	B	302	306	312	314

No	Kode	Infrastruktur	MACD	FS	SS	RSI	StochRSI	CCI	S2	S1	R1	R2
1	CMNP	CITRA MARGA NUSAPHALA PERSADA Tbk	B		S	S	S	S	1,323	1,337	1,377	1,403
2	JSMR	JASA MARGA (PERSERO) Tbk	B	S	B	S	S	S	4,483	4,527	4,647	4,723
3	WEHA	PANORAMA TRANSPORTASI Tbk	S		B	S	S	S	148	148	149	150
5	PGAS	PERUSAHAAN GAS NEGARA (PERSERO)	B		B	S	S	S	2,067	2,083	2,133	2,167
6	RAJA	RUKUN RAHARJA Tbk		S	S	S	S	S	343	353	369	375
7	TLKM	TELEKOMUNIKASI INDONESIA Tbk	S	B	BB	S	S	S	3,657	3,693	3,803	3,877
8	TBIG	TOWER BERSAMA INFRASTRUCTURE Tbk	B	B	B	S	S	S	3,860	3,880	3,940	3,980
9	TRAM	TRADA MARITIME Tbk	B		B	S	S	S	152	158	178	192
10	WINS	WINTERMAR OFFSHORE MARINE Tbk	S		B	S	S	S	219	219	221	223
11	EXCL	XL Axiata Tbk	B		B	S	S	S	1,893	1,907	1,947	1,973

No	Kode	Pertambangan	MACD	FS	SS	RSI	StochRSI	CCI	S2	S1	R1	R2
1	ADRO	ADARO ENERGY Tbk	B	B	B	S	B	B	1,248	1,267	1,307	1,328
2	ANTM	ANEKA TAMBANG Tbk	B	S	B	S	S	S	742	748	763	772
3	CTTH	CITATAH Tbk	B	B	B	B	B	B	104	109	116	118
4	ENRG	ENERGI MEGA PERSADA Tbk	B	B	B	S	S	S	62	64	69	72
6	HRUM	HARUM ENERGY Tbk	B	B	B	S	B	B	1,490	1,515	1,575	1,610
7	ITMG	INDO TAMBANGRAYA MEGAH Tbk	B		B	S	S	S	20,225	20,425	21,025	21,425
8	MEDC	MEDCO ENERGI INTERNASIONAL Tbk	B			S	S	S	703	712	737	753
9	MITI	MITRA INVESTINDO Tbk	B			S	S	S	49	50	51	51
12	KKGI	RESOURCE ALAM INDONESIA Tbk	S	B		S	S	B	333	341	353	357
13	PTBA	TAMBANG BATUBARA BUKIT ASAM (PERSE)	B	S	B	S	S	S	4,320	4,390	4,510	4,560
14	TINS	TIMAH Tbk	B	S	S	S	S	S	737	743	758	767
15	INCO	VALE INDONESIA Tbk	B		B	S	S	S	2,980	3,030	3,160	3,240

No	Kode	Pertanian dan Perkebunan	MACD	FS	SS	RSI	StochRSI	CCI	S2	S1	R1	R2
1	AALI	ASTRA AGRO LESTARI Tbk	B		S	B	B	B	11,692	11,783	11,933	11,992
2	BISI	BISI INTERNATIONAL Tbk	S	B	B	S	S	S	1,500	1,500	1,500	1,500
3	BWPT	BW PLANTATION Tbk.	B	B	BB	S	S	S	166	168	171	172
4	DSFI	DHARMA SAMUDERA FISHING INDUSTRIES	B			S	S	S	103	104	105	105
5	LSIP	PP LONDON SUMATRA INDONESIA Tbk	B	B	B	B	B	B	1,215	1,240	1,285	1,305
7	TBLA	TUNAS BARU LAMPUNG Tbk	B	B	B	S	S	S	815	825	845	855

No	Kode	Perdagangan dan Jasa	MACD	FS	SS	RSI	StochRSI	CCI	S2	S1	R1	R2
1	ACES	ACE HARDWARE INDONESIA Tbk	S	S		S	S	S	1,458	1,477	1,517	1,538
2	AKRA	AKR CORPORINDO Tbk	B	B	B	B	B	B	4,250	4,320	4,440	4,490
3	ASGR	ASTRA GRAPHIA Tbk	B			B	B	B	1,312	1,323	1,343	1,352
4	BUVA	BUKIT ULUWATU VILLA Tbk	S	B	B	S	S	B	200	206	218	224
5	CSAP	CATUR SENTOSA ADIPRANA Tbk	S		S	S	S	S	583	587	597	603
6	CLPI	COLORPAK INDONESIA Tbk	B	BB		S	S	S	700	700	700	700
9	BMTR	GLOBAL MEDIACOM Tbk	B	S	BB	S	S	S	299	307	327	339
10	HEXA	HEXINDO ADIPERKASA Tbk	B	S	S	S	B	B	2,743	2,757	2,777	2,783
12	JTPE	JASUINDO TIGA PERKASA Tbk	B	S	S	S	S	S	481	485	493	497
13	LTLS	LAUTAN LUAS Tbk	S	B	B	S	S	S	542	548	563	572

No	Kode	Perdagangan dan Jasa	MACD	FS	SS	RSI	StochRSI	CCI	S2	S1	R1	R2
1	MPPA	MATAHARI PUTRA PRIMA Tbk	B		B	S	S	S	164	166	172	176
2	MNCN	MEDIA NUSANTARA CITRA Tbk	S		B	B	B	B	697	738	823	867
3	MTDL	METRODATA ELECTRONICS Tbk	S		S	S	S	S	807	813	833	847
5	MAPI	MITRA ADIPERKASA Tbk	S		S	S	S	S	780	785	800	810
6	MICE	MULTI INDOCITRA Tbk	B		B	S	S	S	365	369	379	385
7	MLPL	MULTIPOLAR Tbk	S		B	S	S	S	75	76	78	79
8	PANR	PANORAMA SENTRAWISATA Tbk	S	S	S	S	S	S	363	365	367	367
9	RALS	RAMAYANA LESTARI SENTOSA Tbk	B	S	S	S	S	S	1,325	1,340	1,385	1,415
11	AMRT	SUMBER ALFARIA TRJAYA Tbk	B			S	S	S	853	862	877	883
12	SCMA	SURYA CITRA MEDIA Tbk		S		S	S	S	1,863	1,887	1,937	1,963
15	UNTR	UNITED TRACTORS Tbk		B	B	S	B	B	29,208	29,317	29,567	29,708

No	Kode	Properti dan Real Estat	MACD	FS	SS	RSI	StochRSI	CCI	S2	S1	R1	R2
1	ADHI	ADHI KARYA (PERSERO) Tbk	B	S	B	S	S	S	1,602	1,628	1,693	1,732
2	APLN	AGUNG PODOMORO LAND Tbk	S	B		S	S	S	154	156	161	164
3	ASRI	ALAM SUTERA REALTY Tbk	S			S	S	S	331	337	351	359
4	BSDE	BUMI SERPONG DAMAI Tbk	S	B		B	S	B	1,270	1,295	1,335	1,350
5	CTRA	CIPUTRA DEVELOPMENT Tbk	S		S	S	S	S	980	995	1,030	1,050
8	COWL	COWELL DEVELOPMENT Tbk	B		B	S	S	S	414	416	420	422
9	DILD	INTILAND DEVELOPMENT Tbk	B	B	B	S	S	S	311	311	313	315
10	KJJA	KAWASAN INDUSTRI JABABEKA Tbk	S	B	B	B	B	B	242	246	252	254
11	LPCK	LIPPO CIKARANG Tbk	S	S	S	S	S	S	1,445	1,475	1,545	1,585
12	LPKR	LIPPO KARAWACI Tbk	B	B	B	S	S	S	256	260	268	272
13	KPIG	MNC LAND Tbk	S		B	B	B	B	129	133	138	139
14	MDLN	MODERNLAND REALTY Tbk	B		S	S	S	S	212	214	220	224
16	PWON	PAKUWON JATI Tbk	S	B		S	S	S	613	622	637	643
17	PTPP	PP (PERSERO) Tbk	B	S		S	S	S	1,958	1,977	2,032	2,068
18	BKSL	SENTUL CITY Tbk	B		B	S	S	S	115	117	120	121
19	SMRA	SUMMARECON AGUNG Tbk	B		B	S	S	S	838	847	872	888
20	SSIA	SURYA SEMESTA INTERNUSA Tbk	B	B	B	B	B	B	465	471	483	489
21	TOTL	TOTAL BANGUN PERSADA Tbk	B	B	B	S	S	S	543	552	567	573
22	WIKA	WIJAYA KARYA (PERSERO) Tbk	B	S	S	B	B	B	1,608	1,657	1,752	1,798

Keterangan: B: Buy, S: Sell,

Perhitungan level *support* dan *resistance* dilakukan menggunakan *pivot point*

FS : Fast Stochastic

SS : Slow Stochastic

RSI : Relative Strength Index

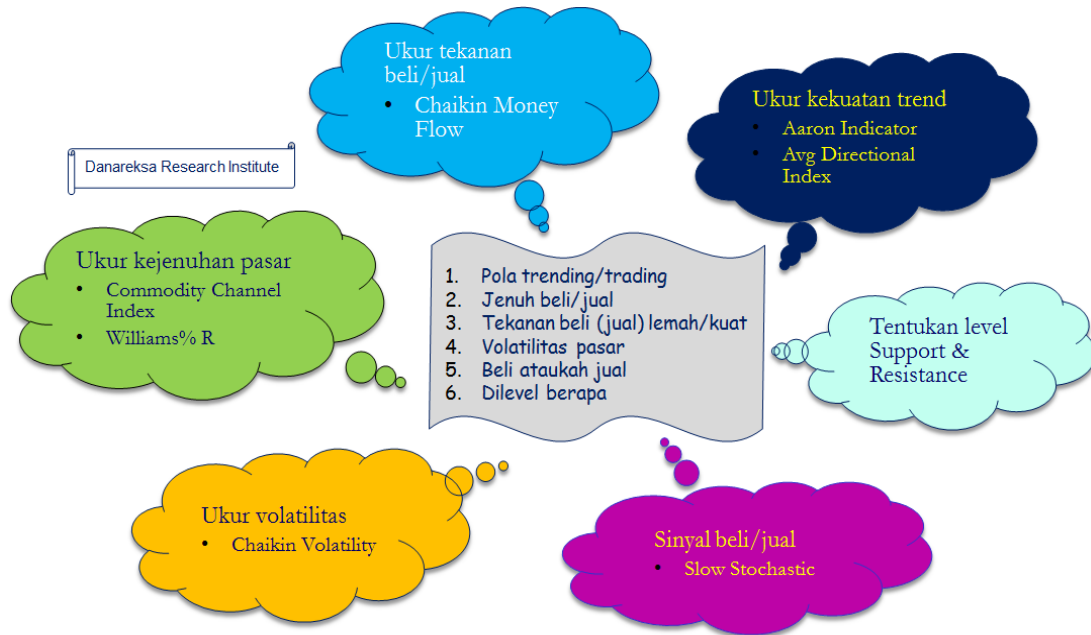
StochRSI : Stochastic RSI

CCI : Commodity Channel Index

S : Support

R : Resistance

Analisis Teknikal Lebih Cepat



Disclaimer:

The information contained in this report has been taken from sources which we deem reliable. However, none of Danareksa Research Institute and/or its affiliated companies and/or their respective employees and/or agents makes any representation or warranty (express or implied) or accepts any responsibility or liability as to, or in relation to, the accuracy or completeness of the information and opinions contained in this report or as to any information contained in this report or any other such information or opinions remaining unchanged after the issue hereof. We have no responsibility to update this report in respect of events and circumstances occurring after the date of this report. We expressly disclaim any responsibility or liability (express or implied) of Danareksa Research Institute and/or its affiliated companies and/or their respective employees and/or agents whatsoever and howsoever arising (including, without limitation for any claims, proceedings, actions, suits, losses, expenses, damages or costs) which may be brought against or suffered by any person as a result of acting in reliance upon the whole or any part of the contents of this report and neither Danareksa Research Institute and/or its affiliated companies and/or their respective employees and/or agents accepts liability for any errors, omissions or mis-statements, negligent or otherwise, in this report and any liability in respect of this report or any inaccuracy herein or omission herefrom which might otherwise arise is hereby expressly disclaimed.

Accordingly, none of Danareksa Research Institute and/or its affiliated companies and/or their respective employees and/or agents shall be liable for any direct, indirect or consequential loss or damage suffered by any person as a result of relying on any statement or omission in any information contained in this report. This report is prepared for general circulation. It does not have regard to the specific person who may receive this report.