

# Indeks Harga Saham Gabungan (IHSG)

**Signal Neutral**

Last 5.792

Target 5.800

52wk Range 5,668 - 6,693

**Highlight**

Kinerja IHSG cenderung bergerak terbatas untuk menguji level 5.800 sebagai kisaran level resistance dan 5.770 sebagai kisaran level support

**Global Index**

S&P 500  
2,733.29  
+8.85(+0.32%)

Dow 30  
24,886.81  
+52.40(+0.21%)

Nasdaq  
7,425.96  
+47.50(+0.64%)

**Lucky Bayu Purnomo**

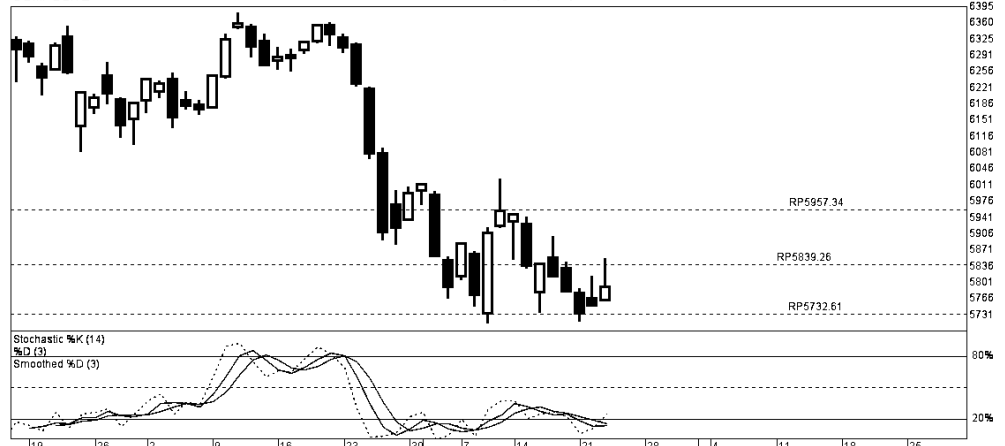
Research Analyst

(62-21) 2955 577 ext.3512

lucky.purnomo@danareksa.com

Danareksa research report are also available at Reuters Mulfex and First Call Direct and Bloomberg

COMPOSITE 23/05/2018 O=5764 H=5850 L=5764 C=5792 V=9.03B Chg=+41 (+0.7%)



Kinerja IHSG

COMPOSITE 23/05/2018 O=5764 H=5850 L=5764 C=5792 V=9.03B Chg=+41 (+0.7%)



Kinerja IHSG

COMPOSITE 23/05/2018 O=5764 H=5850 L=5764 C=5792 V=9.03B Chg=+41 (+0.7%)



Kinerja IHSG

**Disclaimer**

The information contained in this report has been taken from sources which we deem reliable. However, none of P.T. Danareksa Sekuritas and/or its affiliated companies and/or their respective employees and/or agents makes any representation or warranty (express or implied) or accepts any responsibility or liability as to, or in relation to, the accuracy or completeness of the information and opinions contained in this report or as to any information contained in this report or any other such information or opinions remaining unchanged after the issue thereof. We expressly disclaim any responsibility or liability (express or implied) of P.T. Danareksa Sekuritas, its affiliated companies and their respective employees and agents whatsoever and howsoever arising (including, without limitation for any claims, proceedings, action, suits, losses, expenses, damages or costs) which may be brought against or suffered by any person as a result of acting in reliance upon the whole or any part of the contents of this report and neither P.T. Danareksa Sekuritas, its affiliated companies or their respective employees or agents accepts liability for any errors, omissions or mis-statements, negligent or otherwise, in the report and any liability in respect of the report or any inaccuracy therein or omission therefrom which might otherwise arise is hereby expressly disclaimed. The information contained in this report is not to be taken as any recommendation made by P.T. Danareksa Sekuritas or any other person to enter into any agreement with regard to any investment mentioned in this document. This report is prepared for general circulation. It does not have regards to the specific person who may receive this report. In considering any investments you should make your own independent assessment and seek your own professional financial and legal advice.

# PT Pembangunan Perumahan (Persero) Tbk (PTPP)

Call Buy

Last 2.600

Entry point 2.600

Exit point 2.620

Stop loss 2.460

52wk Range 2,000 - 3,370

### Highlight

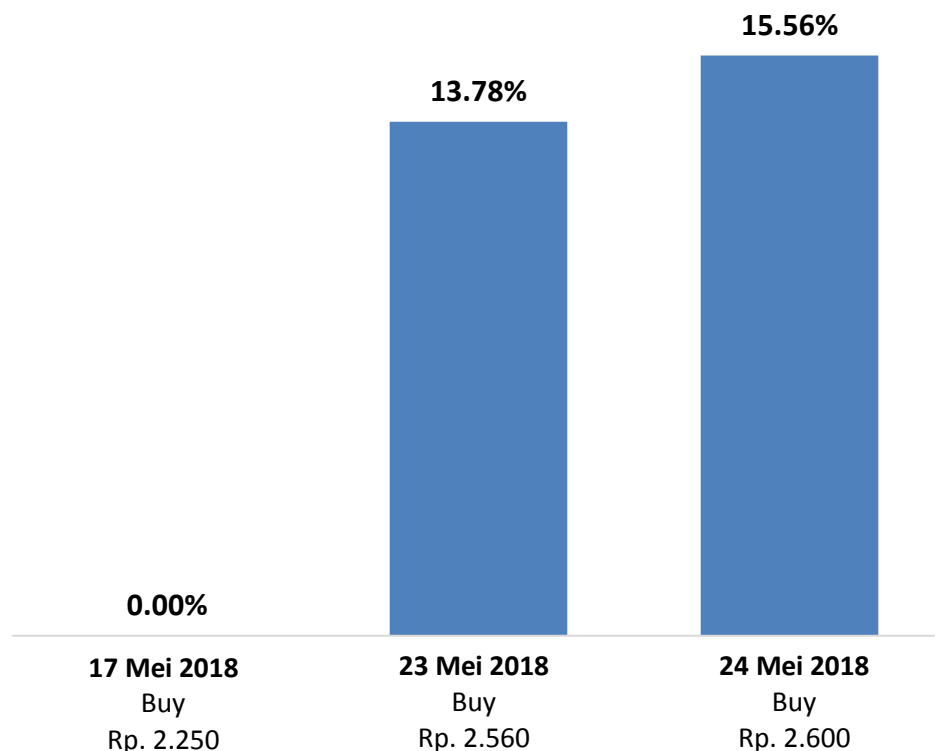
Kinerja saham PTPP cenderung menguat untuk menguji harga 2.620 hingga 2.830 sebagai kisaran level *resistance* yang telah dicapai sebelumnya

**Lucky Bayu Purnomo**  
Research Analyst  
(62-21) 2955 5777 ext.3512  
lucky.purnomo@danareksa.com

Danareksa research report are also available at Reuters Multex and First Call Direct and Bloomberg



Kinerja PTPP



Kinerja rekomendasi stock shoot saham PPTP, periode 17 Mei 2018 – 24 Mei 2018

### Disclaimer

The information contained in this report has been taken from sources which we deem reliable. However, none of P.T. Danareksa Sekuritas and/or its affiliated companies and/or their respective employees and/or agents makes any representation or warranty (express or implied) or accepts any responsibility or liability as to, or in relation to, the accuracy or completeness of the information and opinions contained in this report or as to any information contained in this report or any other such information or opinions remaining unchanged after the issue thereof. We expressly disclaim any responsibility or liability (express or implied) of P.T. Danareksa Sekuritas, its affiliated companies and their respective employees and agents whatsoever and howsoever arising (including, without limitation for any claims, proceedings, action, suits, losses, expenses, damages or costs) which may be brought against or suffered by any person as a result of acting in reliance upon the whole or any part of the contents of this report and neither P.T. Danareksa Sekuritas, its affiliated companies or their respective employees or agents accepts liability for any errors, omissions or mis-statements, negligent or otherwise, in the report and any liability in respect of the report or any inaccuracy therein or omission therefrom which might otherwise arise is hereby expressly disclaimed. The information contained in this report is not to be taken as any recommendation made by P.T. Danareksa Sekuritas or any other person to enter into any agreement with regard to any investment mentioned in this document. This report is prepared for general circulation. It does not have regards to the specific person who may receive this report. In considering any investments you should make your own independent assessment and seek your own professional financial and legal advice.