

# Indeks Harga Saham Gabungan (IHSG)

Signal Positive

Last 5,947

Target 5.985

52wk Range 5,294 - 6,686

**Highlight**

Kinerja Indeks Harga Saham Gabungan (IHSG) cenderung menguat terbatas untuk menguji kisaran level resistance 5.985

**Global Index**

S&P 500  
2,730.13  
+2.41(+0.09%)

Dow 30  
24,899.41  
+68.24(+0.27%)

Nasdaq  
7,411.32  
+8.43(+0.11%)

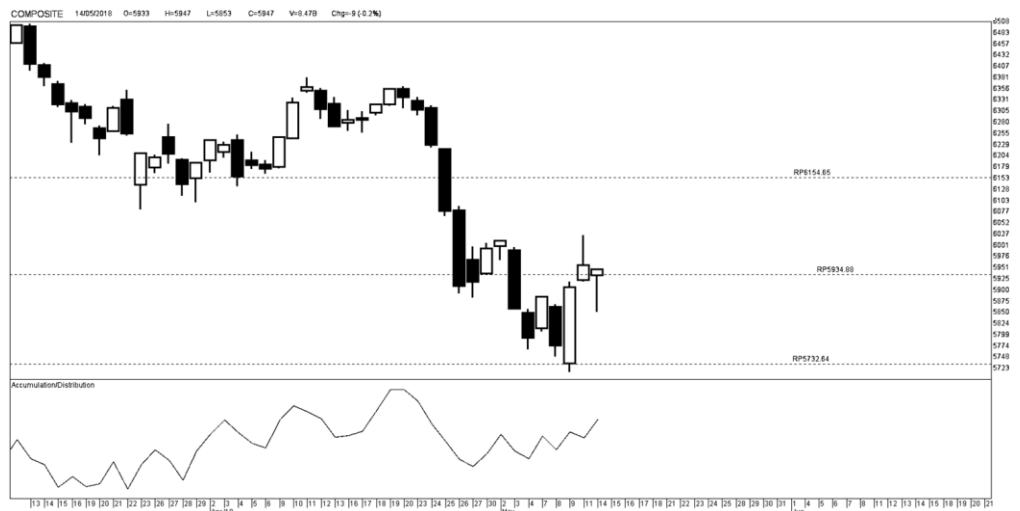
**Lucky Bayu Purnomo**  
Research Analyst

( 62-21) 2955 577 ext.3512  
lucky.purnomo@danareksa.com

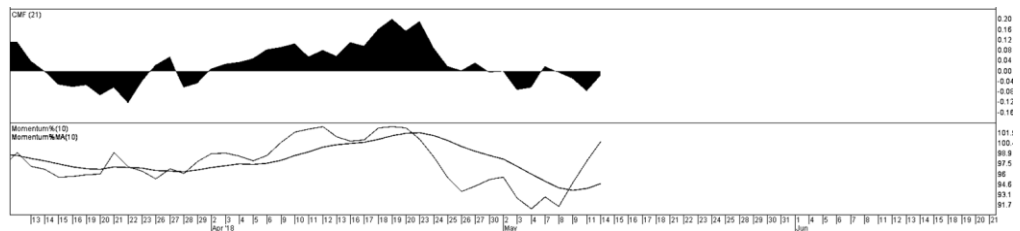
Danareksa research report are also available at Reuters Mulfex and First Call Direct and Bloomberg



Kinerja IHSG



Kinerja IHSG



Kinerja IHSG

**Disclaimer**

The information contained in this report has been taken from sources which we deem reliable. However, none of P.T. Danareksa Sekuritas and/or its affiliated companies and/or their respective employees and/or agents makes any representation or warranty (express or implied) or accepts any responsibility or liability as to, or in relation to, the accuracy or completeness of the information and opinions contained in this report or as to any information contained in this report or any other such information or opinions remaining unchanged after the issue thereof. We expressly disclaim any responsibility or liability (express or implied) of P.T. Danareksa Sekuritas, its affiliated companies and their respective employees and agents whatsoever and howsoever arising (including, without limitation for any claims, proceedings, action, suits, losses, expenses, damages or costs) which may be brought against or suffered by any person as a result of acting in reliance upon the whole or any part of the contents of this report and neither P.T. Danareksa Sekuritas, its affiliated companies or their respective employees or agents accepts liability for any errors, omissions or mis-statements, negligent or otherwise, in the report and any liability in respect of the report or any inaccuracy therein or omission therefrom which might otherwise arise is hereby expressly disclaimed. The information contained in this report is not to be taken as any recommendation made by P.T. Danareksa Sekuritas or any other person to enter into any agreement with regard to any investment mentioned in this document. This report is prepared for general circulation. It does not have regards to the specific person who may receive this report. In considering any investments you should make your own independent assessment and seek your own professional financial and legal advice.

# PT Elnusa Tbk (ELSA)

Call Buy

Last 420

Entry point 420

Exit point 435 - 465

Stop loss 398

52wk Range 226 - 540

**Highlight**

Kinerja saham ELSA cenderung menguat untuk menguji harga 435 hingga 465 sebagai target level *resistance* yang telah dicapai sebelumnya,

Potensi tersebut disertai dengan kondisi *oversold* atau jenuh jual

**Lucky Bayu Purnomo**  
Research Analyst  
(62-21) 2955 5777 ext.3512  
lucky.purnomo@danareksa.com

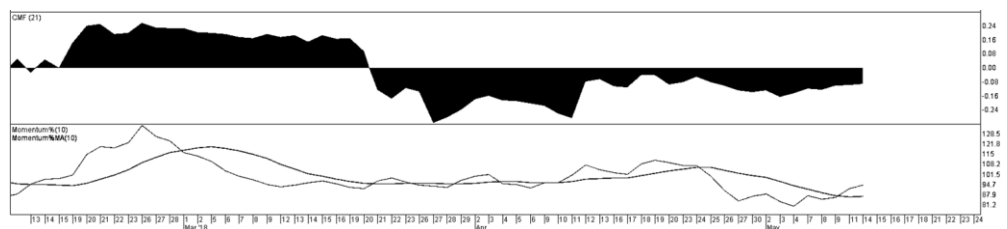
Danareksa research report are also available at Reuters Multex and First Call Direct and Bloomberg



Kinerja ELSA



Kinerja ELSA



**Disclaimer**

The information contained in this report has been taken from sources which we deem reliable. However, none of P.T. Danareksa Sekuritas and/or its affiliated companies and/or their respective employees and/or agents makes any representation or warranty (express or implied) or accepts any responsibility or liability as to, or in relation to, the accuracy or completeness of the information and opinions contained in this report or as to any information contained in this report or any other such information or opinions remaining unchanged after the issue thereof. We expressly disclaim any responsibility or liability (express or implied) of P.T. Danareksa Sekuritas, its affiliated companies and their respective employees and agents whatsoever and howsoever arising (including, without limitation for any claims, proceedings, action, suits, losses, expenses, damages or costs) which may be brought against or suffered by any person as a result of acting in reliance upon the whole or any part of the contents of this report and neither P.T. Danareksa Sekuritas, its affiliated companies or their respective employees or agents accepts liability for any errors, omissions or mis-statements, negligent or otherwise, in the report and any liability in respect of the report or any inaccuracy therein or omission therefrom which might otherwise arise is hereby expressly disclaimed. The information contained in this report is not to be taken as any recommendation made by P.T. Danareksa Sekuritas or any other person to enter into any agreement with regard to any investment mentioned in this document. This report is prepared for general circulation. It does not have regards to the specific person who may receive this report. In considering any investments you should make your own independent assessment and seek your own professional financial and legal advice.

# PT Vale Indonesia Tbk (INCO)

Call Buy

Last 3.410

Entry point 3.410

Exit point 3.460 - 3.800

Stop loss 3.230

52wk Range 1,835 - 3,890

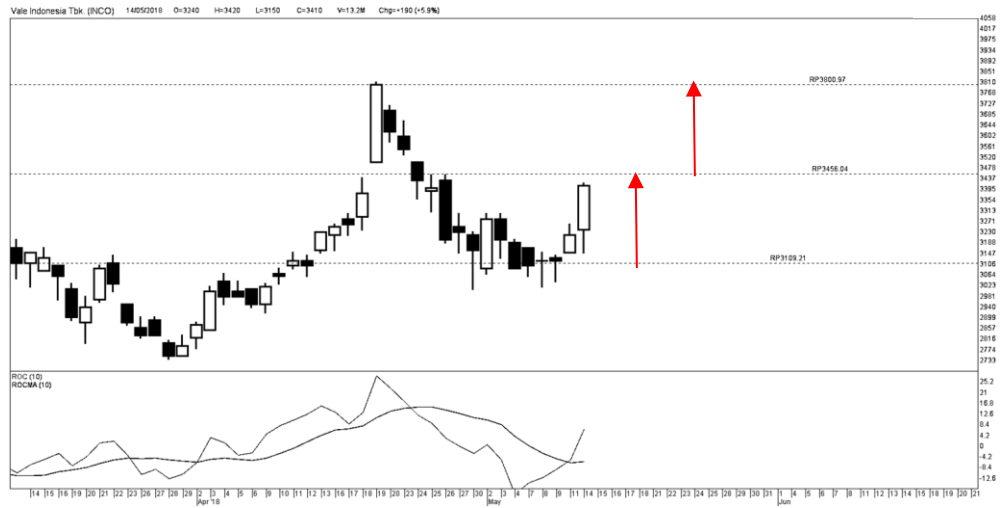
**Highlight**

Kinerja saham INCO cenderung menguat untuk menguji harga 3.460 hingga 3.890 sebagai target level *resistance* yang telah dicapai sebelumnya

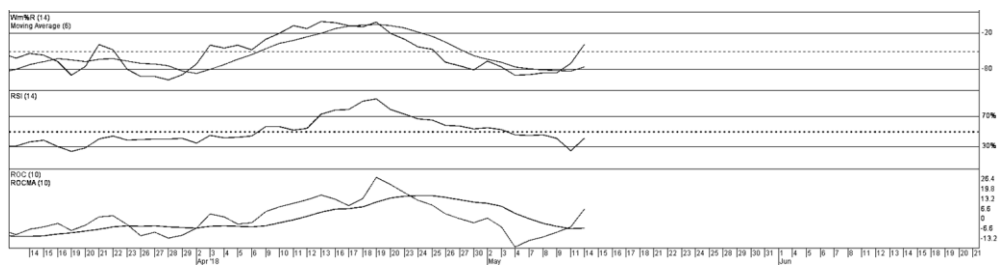
Potensi tersebut disertai dengan kondisi *oversold* atau jenuh jual

**Lucky Bayu Purnomo**  
 Research Analyst  
 (62-21) 2955 5777 ext.3512  
 lucky.purnomo@danareksa.com

Danareksa research report are also available at Reuters Multex and First Call Direct and Bloomberg



Kinerja INCO



Kinerja INCO

**Disclaimer**

The information contained in this report has been taken from sources which we deem reliable. However, none of P.T. Danareksa Sekuritas and/or its affiliated companies and/or their respective employees and/or agents makes any representation or warranty (express or implied) or accepts any responsibility or liability as to, or in relation to, the accuracy or completeness of the information and opinions contained in this report or as to any information contained in this report or any other such information or opinions remaining unchanged after the issue thereof. We expressly disclaim any responsibility or liability (express or implied) of P.T. Danareksa Sekuritas, its affiliated companies and their respective employees and agents whatsoever and howsoever arising (including, without limitation for any claims, proceedings, action, suits, losses, expenses, damages or costs) which may be brought against or suffered by any person as a result of acting in reliance upon the whole or any part of the contents of this report and neither P.T. Danareksa Sekuritas, its affiliated companies or their respective employees or agents accepts liability for any errors, omissions or mis-statements, negligent or otherwise, in the report and any liability in respect of the report or any inaccuracy therein or omission therefrom which might otherwise arise is hereby expressly disclaimed. The information contained in this report is not to be taken as any recommendation made by P.T. Danareksa Sekuritas or any other person to enter into any agreement with regard to any investment mentioned in this document. This report is prepared for general circulation. It does not have regards to the specific person who may receive this report. In considering any investments you should make your own independent assessment and seek your own professional financial and legal advice.