

# Indeks Harga Saham Gabungan (IHSG)

**Signal Positive**

Last  
6.433

Target  
6.490

52wk Range  
5,294 - 6,686

## Highlight

Kinerja Indeks Harga Saham Gabungan (IHSG) cenderung menguat untuk menguji level 6.460 hingga 6.480 sebagai kisaran level *resistance* dalam jangka pendek

## Global Index

S&P 500  
2,786.57  
+47.60(+1.74%)

Dow 30  
25,335.74  
+440.53(+1.77%)

Nasdaq  
7,560.81  
+132.86(+1.79%)

## Lucky Bayu Purnomo

Research Analyst

( 62-21) 2955 577 ext.3512

lucky.purnomo@danareksa.com

Danareksa research report are also available at Reuters Muxtel and First Call Direct and Bloomberg



Kinerja IHSG



Kinerja IHSG

Resistance 3	6,610	Support 1	6,295
Resistance 2	6,490	Support 2	6,251
Resistance 1	6,415	Support 3	6,131
Pivot Point	6,370		

Support & Resistance IHSG

## Disclaimer

The information contained in this report has been taken from sources which we deem reliable. However, none of P.T. Danareksa Sekuritas and/or its affiliated companies and/or their respective employees and/or agents makes any representation or warranty (express or implied) or accepts any responsibility or liability as to, or in relation to, the accuracy or completeness of the information and opinions contained in this report or as to any information contained in this report or any other such information or opinions remaining unchanged after the issue thereof. We expressly disclaim any responsibility or liability (express or implied) of P.T. Danareksa Sekuritas, its affiliated companies and their respective employees and agents whatsoever and howsoever arising (including, without limitation for any claims, proceedings, action, suits, losses, expenses, damages or costs) which may be brought against or suffered by any person as a result of acting in reliance upon the whole or any part of the contents of this report and neither P.T. Danareksa Sekuritas, its affiliated companies or their respective employees or agents accepts liability for any errors, omissions or mis-statements, negligent or otherwise, in the report and any liability in respect of the report or any inaccuracy therein or omission therefrom which might otherwise arise is hereby expressly disclaimed. The information contained in this report is not to be taken as any recommendation made by P.T. Danareksa Sekuritas or any other person to enter into any agreement with regard to any investment mentioned in this document. This report is prepared for general circulation. It does not have regards to the specific person who may receive this report. In considering any investments you should make your own independent assessment and seek your own professional financial and legal advice.

## PT Adhi Karya (Persero) Tbk (ADHI)

**Call  
Buy**

Last  
2.420

Entry point  
2.420

Exit point  
2.510

Stop loss  
2.080

52wk Range  
1,705 - 2,510

### Highlight

Kinerja saham ADHI cenderung menguat untuk menguji target harga 2.510 sebagai kisaran harga selama 52 minggu yang telah dicapai sebelumnya

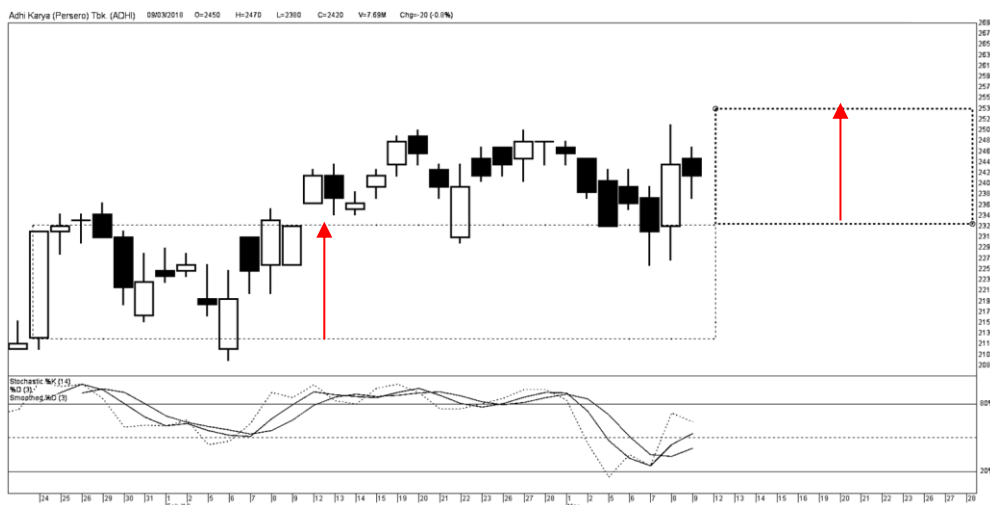
**Lucky Bayu Purnomo**

Research Analyst

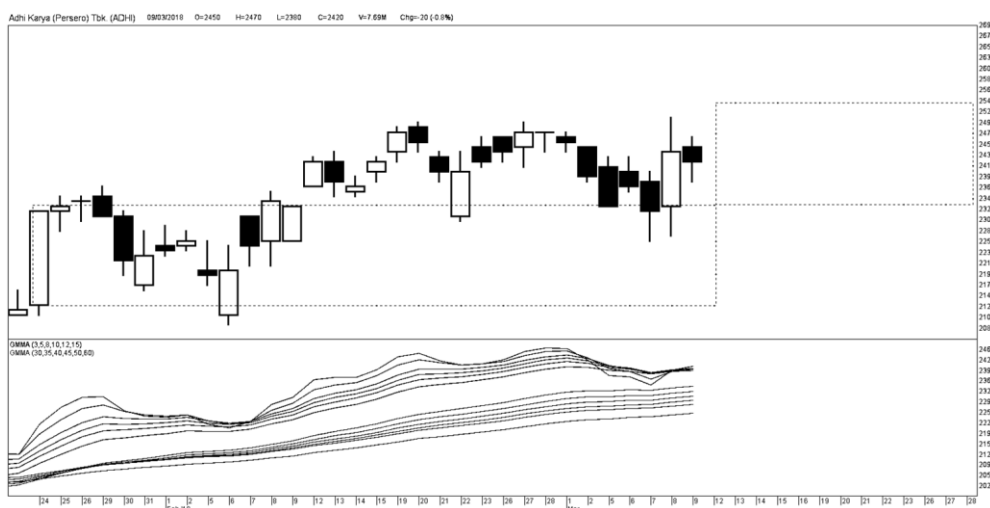
( 62-21) 2955 5777 ext.3512

lucky.purnomo@danareksa.com

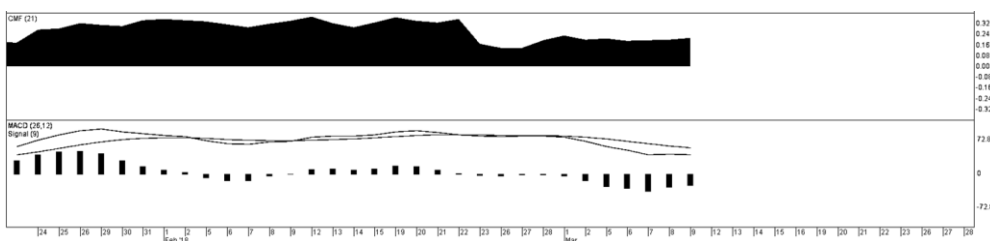
Danareksa research report are also available at Reuters Muxtel and First Call Direct and Bloomberg



Kinerja saham ADHI



Kinerja saham ADHI



### Disclaimer

The information contained in this report has been taken from sources which we deem reliable. However, none of P.T. Danareksa Sekuritas and/or its affiliated companies and/or their respective employees and/or agents makes any representation or warranty (express or implied) or accepts any responsibility or liability as to, or in relation to, the accuracy or completeness of the information and opinions contained in this report or as to any information contained in this report or any other such information or opinions remaining unchanged after the issue thereof. We expressly disclaim any responsibility or liability (express or implied) of P.T. Danareksa Sekuritas, its affiliated companies and their respective employees and agents whatsoever and howsoever arising (including, without limitation for any claims, proceedings, action, suits, losses, expenses, damages or costs) which may be brought against or suffered by any person as a result of acting in reliance upon the whole or any part of the contents of this report and neither P.T. Danareksa Sekuritas, its affiliated companies or their respective employees or agents accepts liability for any errors, omissions or mis-statements, negligent or otherwise, in the report and any liability in respect of the report or any inaccuracy therein or omission therefrom which might otherwise arise is hereby expressly disclaimed. The information contained in this report is not to be taken as any recommendation made by P.T. Danareksa Sekuritas or any other person to enter into any agreement with regard to any investment mentioned in this document. This report is prepared for general circulation. It does not have regards to the specific person who may receive this report. In considering any investments you should make your own independent assessment and seek your own professional financial and legal advice.

## PT Adaro Energy Tbk (ADRO)

**Call  
Buy**

Last  
2.170

Entry point  
2.170

Exit point  
2.300 - 2.500

Stop loss  
2.080

52wk Range  
1,995 - 2,210

### Highlight

Kinerja saham ADRO cenderung menguat untuk menguji target harga pertama pada kisaran 2.300 dengan target harga tertinggi pada kisaran 2.500. Sementara target harga ADRO dalam jangka pendek berada pada harga 2.210 sebagai kisaran harga selama 52 minggu sebelumnya

**Lucky Bayu Purnomo**

Research Analyst

( 62-21) 2955 5777 ext.3512

lucky.purnomo@danareksa.com

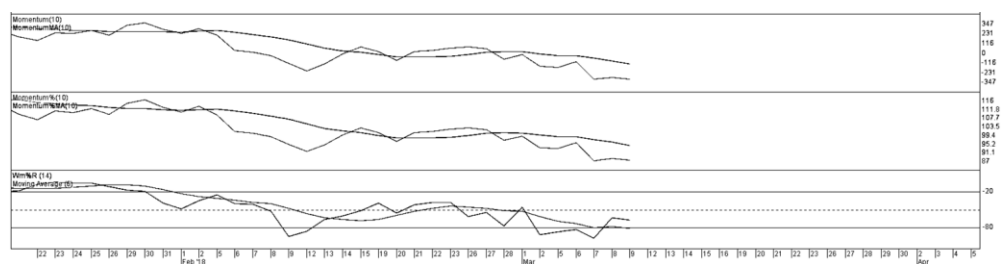
Danareksa research report are also available at Reuters Muxet and First Call Direct and Bloomberg



Kinerja saham ADRO



Kinerja saham ADRO



### Disclaimer

The information contained in this report has been taken from sources which we deem reliable. However, none of P.T. Danareksa Sekuritas and/or its affiliated companies and/or their respective employees and/or agents makes any representation or warranty (express or implied) or accepts any responsibility or liability as to, or in relation to, the accuracy or completeness of the information and opinions contained in this report or as to any information contained in this report or any other such information or opinions remaining unchanged after the issue thereof. We expressly disclaim any responsibility or liability (express or implied) of P.T. Danareksa Sekuritas, its affiliated companies and their respective employees and agents whatsoever and howsoever arising (including, without limitation for any claims, proceedings, action, suits, losses, expenses, damages or costs) which may be brought against or suffered by any person as a result of acting in reliance upon the whole or any part of the contents of this report and neither P.T. Danareksa Sekuritas, its affiliated companies or their respective employees or agents accepts liability for any errors, omissions or mis-statements, negligent or otherwise, in the report and any liability in respect of the report or any inaccuracy therein or omission therefrom which might otherwise arise is hereby expressly disclaimed. The information contained in this report is not taken as any recommendation made by P.T. Danareksa Sekuritas or any other person to enter into any agreement with regard to any investment mentioned in this document. This report is prepared for general circulation. It does not have regards to the specific person who may receive this report. In considering any investments you should make your own independent assessment and seek your own professional financial and legal advice.

## PT Bank Central Asia Tbk (BBCA)

**Call  
Buy**

Last  
23.300

Target  
24.700

Stop Loss  
22.150

52wk Range  
15,475 - 24,700

### Highlight

Kinerja saham  
BBCA cenderung menguat  
untuk menguji harga 24.000  
hingga 24.700 sebagai kisaran level  
*resistance* dan kinerja harga tertinggi  
selama 52 minggu sebelumnya

trend tersebut disertai dengan fase  
akumulasi yang berada pada teritori  
jenuh jual, dengan peluang *reversal*

**Lucky Bayu Purnomo**

Research Analyst

( 62-21) 2955 5777 ext.3512

lucky.purnomo@danareksa.com

Danareksa research report are also  
available at Reuters Mulfex and First  
Call Direct and Bloomberg



Kinerja saham BBCA



Kinerja saham BBCA

### Disclaimer

The information contained in this report has been taken from sources which we deem reliable. However, none of P.T. Danareksa Sekuritas and/or its affiliated companies and/or their respective employees and/or agents makes any representation or warranty (express or implied) or accepts any responsibility or liability as to, or in relation to, the accuracy or completeness of the information and opinions contained in this report or as to any information contained in this report or any other such information or opinions remaining unchanged after the issue thereof. We expressly disclaim any responsibility or liability (express or implied) of P.T. Danareksa Sekuritas, its affiliated companies and their respective employees and agents whatsoever and howsoever arising (including, without limitation for any claims, proceedings, action, suits, losses, expenses, damages or costs) which may be brought against or suffered by any person as a result of acting in reliance upon the whole or any part of the contents of this report and neither P.T. Danareksa Sekuritas, its affiliated companies or their respective employees or agents accepts liability for any errors, omissions or mis-statements, negligent or otherwise, in the report and any liability in respect of the report or any inaccuracy therein or omission therefrom which might otherwise arise is hereby expressly disclaimed. The information contained in this report is not to be taken as any recommendation made by P.T. Danareksa Sekuritas or any other person to enter into any agreement with regard to any investment mentioned in this document. This report is prepared for general circulation. It does not have regards to the specific person who may receive this report. In considering any investments you should make your own independent assessment and seek your own professional financial and legal advice.

## PT XL Axiata Tbk (EXCL)

**Call  
Buy**

Last  
2.750

Target  
3.100

Stop Loss  
2.610

52wk Range  
2,700 - 4,060

### Highlight

Kinerja saham  
EXCL cenderung menguat  
untuk menguji harga 3.100  
setelah berada pada kisaran level  
*support* sebagai harga terendah  
selama 52 minggu sebelumnya

Trend tersebut disertai dengan fase  
akumulasi yang berada pada teritori  
jenuh jual, dengan peluang *reversal*

**Lucky Bayu Purnomo**

Research Analyst

( 62-21) 2955 5777 ext.3512

lucky.purnomo@danareksa.com

Danareksa research report are also  
available at Reuters Mulfex and First  
Call Direct and Bloomberg



Kinerja saham EXCL



Kinerja saham EXCL

### Disclaimer

The information contained in this report has been taken from sources which we deem reliable. However, none of P.T. Danareksa Sekuritas and/or its affiliated companies and/or their respective employees and/or agents makes any representation or warranty (express or implied) or accepts any responsibility or liability as to, or in relation to, the accuracy or completeness of the information and opinions contained in this report or as to any information contained in this report or any other such information or opinions remaining unchanged after the issue thereof. We expressly disclaim any responsibility or liability (express or implied) of P.T. Danareksa Sekuritas, its affiliated companies and their respective employees and agents whatsoever and howsoever arising (including, without limitation for any claims, proceedings, action, suits, losses, expenses, damages or costs) which may be brought against or suffered by any person as a result of acting in reliance upon the whole or any part of the contents of this report and neither P.T. Danareksa Sekuritas, its affiliated companies or their respective employees or agents accepts liability for any errors, omissions or mis-statements, negligent or otherwise, in the report and any liability in respect of the report or any inaccuracy therein or omission therefrom which might otherwise arise is hereby expressly disclaimed. The information contained in this report is not to be taken as any recommendation made by P.T. Danareksa Sekuritas or any other person to enter into any agreement with regard to any investment mentioned in this document. This report is prepared for general circulation. It does not have regard to the specific person who may receive this report. In considering any investments you should make your own independent assessment and seek your own professional financial and legal advice.

## PT Perusahaan Gas Negara (Persero) Tbk (PGAS)

**Call  
Buy**

Last  
2.390

Target  
2.500 - 2.860

Stop Loss  
2.255

52wk Range  
1,365 - 2,870

### Highlight

Kinerja saham  
PGAS cenderung menguat  
untuk menguji harga 2.500 hingga  
2.860 sebagai kisaran level *resistance*  
dan kinerja harga tertinggi selama  
52 minggu sebelumnya

**Lucky Bayu Purnomo**

Research Analyst

( 62-21) 2955 5777 ext.3512

lucky.purnomo@danareksa.com

Danareksa research report are also  
available at Reuters Mulfex and First  
Call Direct and Bloomberg



Kinerja saham PGAS



Kinerja saham PGAS

### Disclaimer

The information contained in this report has been taken from sources which we deem reliable. However, none of P.T. Danareksa Sekuritas and/or its affiliated companies and/or their respective employees and/or agents makes any representation or warranty (express or implied) or accepts any responsibility or liability as to, or in relation to, the accuracy or completeness of the information and opinions contained in this report or as to any information contained in this report or any other such information or opinions remaining unchanged after the issue thereof. We expressly disclaim any responsibility or liability (express or implied) of P.T. Danareksa Sekuritas, its affiliated companies and their respective employees and agents whatsoever and howsoever arising (including, without limitation for any claims, proceedings, action, suits, losses, expenses, damages or costs) which may be brought against or suffered by any person as a result of acting in reliance upon the whole or any part of the contents of this report and neither P.T. Danareksa Sekuritas, its affiliated companies or their respective employees or agents accepts liability for any errors, omissions or mis-statements, negligent or otherwise, in the report and any liability in respect of the report or any inaccuracy therein or omission therefrom which might otherwise arise is hereby expressly disclaimed. The information contained in this report is not taken as any recommendation made by P.T. Danareksa Sekuritas or any other person to enter into any agreement with regard to any investment mentioned in this document. This report is prepared for general circulation. It does not have regards to the specific person who may receive this report. In considering any investments you should make your own independent assessment and seek your own professional financial and legal advice.



## PT PP Presisi Tbk (PPRE)

**Call  
Buy**

Last  
386

Target  
403

Stop loss  
373

52wk Range  
318 - 420

### Highlight

Kinerja saham PPRE cenderung menguat untuk menguji harga 403 sebagai target pertama pada level *resistance*, dengan target harga tertinggi 420 sebagai kisaran harga tertinggi selama 52 minggu sebelumnya

Peluang reversal tersebut disertai kinerja saham PPRE yang berada pada kisaran level support dan *oversold* atau jenuh jual

**Lucky Bayu Purnomo**

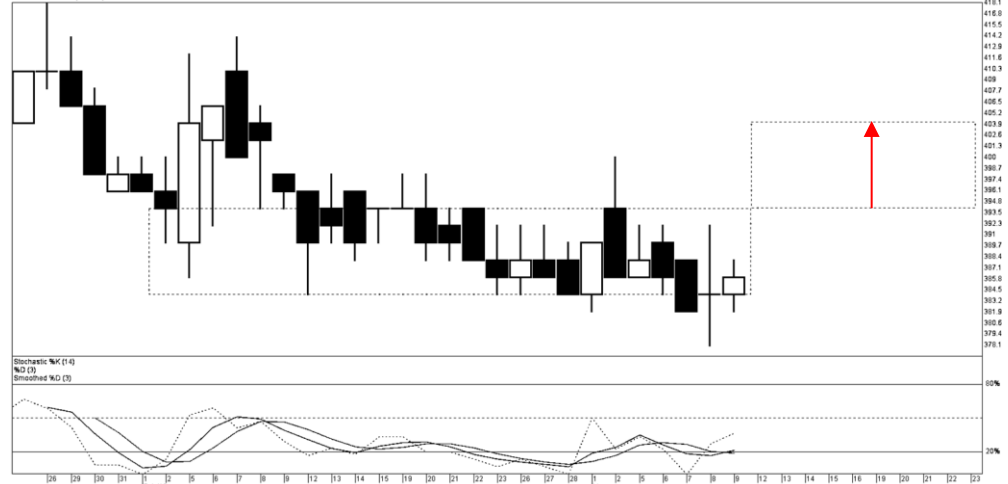
Research Analyst

( 62-21) 2955 5777 ext.3512

lucky.purnomo@danareksa.com

Danareksa research report are also available at Reuters Muxtel and First Call Direct and Bloomberg

PP Presisi Tbk. (PPRE) 09032018 O=384 H=388 L=382 C=385 V=1.60M Chg=+2 (+0.5%)



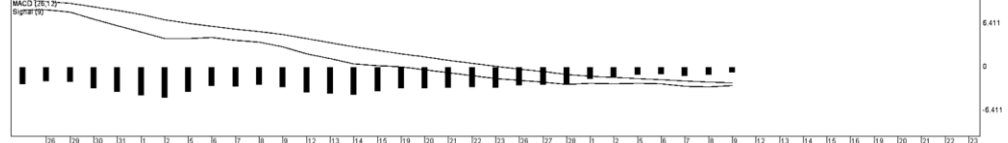
Kinerja saham PPRE

PP Presisi Tbk. (PPRE) 09032018 O=384 H=388 L=382 C=385 V=1.60M Chg=+2 (+0.5%)



Kinerja saham PPRE

PP Presisi Tbk. (PPRE) 09032018 O=384 H=388 L=382 C=385 V=1.60M Chg=+2 (+0.5%)



### Disclaimer

The information contained in this report has been taken from sources which we deem reliable. However, none of P.T. Danareksa Sekuritas and/or its affiliated companies and/or their respective employees and/or agents makes any representation or warranty (express or implied) or accepts any responsibility or liability as to, or in relation to, the accuracy or completeness of the information and opinions contained in this report or as to any information contained in this report or any other such information or opinions remaining unchanged after the issue thereof. We expressly disclaim any responsibility or liability (express or implied) of P.T. Danareksa Sekuritas, its affiliated companies and their respective employees and agents whatsoever and howsoever arising (including, without limitation for any claims, proceedings, action, suits, losses, expenses, damages or costs) which may be brought against or suffered by any person as a result of acting in reliance upon the whole or any part of the contents of this report and neither P.T. Danareksa Sekuritas, its affiliated companies or their respective employees or agents accepts liability for any errors, omissions or mis-statements, negligent or otherwise, in the report and any liability in respect of the report or any inaccuracy therein or omission therefrom which might otherwise arise is hereby expressly disclaimed. The information contained in this report is not to be taken as any recommendation made by P.T. Danareksa Sekuritas or any other person to enter into any agreement with regard to any investment mentioned in this document. This report is prepared for general circulation. It does not have regards to the specific person who may receive this report. In considering any investments you should make your own independent assessment and seek your own professional financial and legal advice.