

Indeks Harga Saham Gabungan (IHSG)

Signal Positive

Last 5.813

Target 5.825

52wk Range 4,754 - 5,910

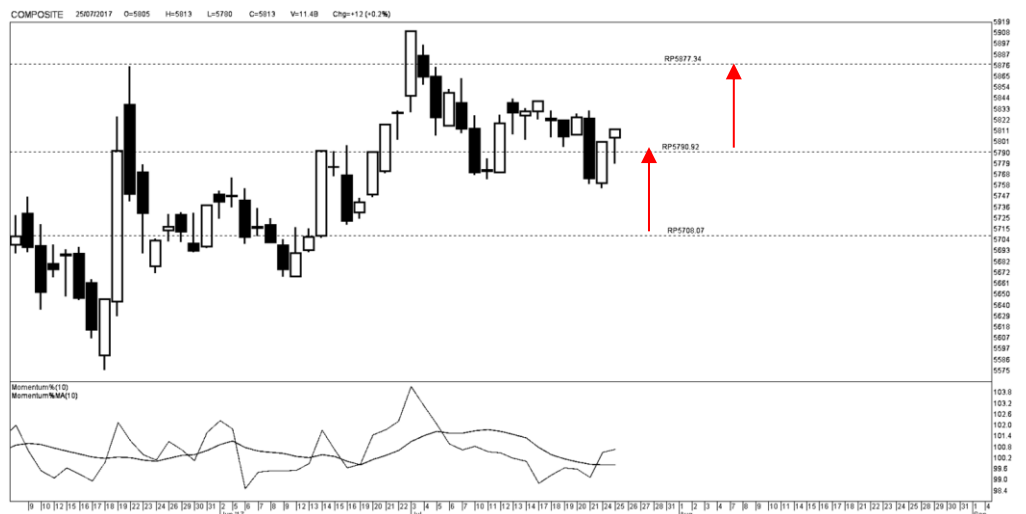
Highlight

Kinerja harian IHSG cenderung menguat terbatas untuk menguji level 5.820

Potensi tersebut disertai dengan kinerja IHSG yang berada trend reversal / perbalikan arah momentum positive



Kinerja IHSG



Kinerja IHSG

Resistance 3	6,042	Support 1	5,858
Resistance 2	5,963	Support 2	5,805
Resistance 1	5,937	Support 3	5,726
Pivot Point	5,884		

Disclaimer

Support & Resistance IHSG

The information contained in this report has been taken from sources which we deem reliable. However, none of P.T. Danareksa Sekuritas and/or its affiliated companies and/or their respective employees and/or agents makes any representation or warranty (express or implied) or accepts any responsibility or liability as to, or in relation to, the accuracy or completeness of the information and opinions contained in this report or as to any information contained in this report or any other such information or opinions remaining unchanged after the issue thereof.

We expressly disclaim any responsibility or liability (express or implied) of P.T. Danareksa Sekuritas, its affiliated companies and their respective employees and agents whatsoever and howsoever arising (including, without limitation for any claims, proceedings, action, suits, losses, expenses, damages or costs) which may be brought against or suffered by any person as a result of acting in reliance upon the whole or any part of the contents of this report and neither P.T. Danareksa Sekuritas, its affiliated companies or their respective employees or agents accepts liability for any errors, omissions or mis-statements, negligent or otherwise, in the report and any liability in respect of the report or any inaccuracy therein or omission therefrom which might otherwise arise is hereby expressly disclaimed. The information contained in this report is not to be taken as any recommendation made by P.T. Danareksa Sekuritas or any other person to enter into any agreement with regard to any investment mentioned in this document. This report is prepared for general circulation. It does not have regards to the specific person who may receive this report. In considering any investments you should make your own independent assessment and seek your own professional financial and legal advice.

Lucky Bayu Purnomo
 Research Analyst
 (62-21) 2955 577 ext.3512
 lucky.purnomo@danareksa.com

Danareksa research report are also available at Reuters Multex and First Call Direct and Bloomberg

Astra International Tbk (ASII)

Call Buy

Last 8,100

Target 8,680

Stop Loss 7,710

52wk Range 7,300 - 9,350

Highlight

Kinerja saham ASII cenderung menguat untuk menguji harga 8,680, disertai dengan kinerja harga saham ASII yang berada dalam potensi *reversal* / perbalikan arah setelah mengalami pelemahan sebelumnya

Potensi tersebut disertai dengan kinerja saham ASII yang berada dalam fase akumulasi beli dengan trend menguat dalam jangka pendek hingga menengah

Lucky Bayu Purnomo
Reserach Analyst
(62-21) 2955 577 ext.3512
lucky.purnomo@danareksa.com

Danareksa research report are also available at Reuters Multex and First Call Direct and Bloomberg



Resistance 3	8,600	Support 1	8,075
Resistance 2	8,375	Support 2	7,925
Resistance 1	8,300	Support 3	7,700
Pivot Point	8,150		

Support & Resistance saham ASII

Disclaimer

The information contained in this report has been taken from sources which we deem reliable. However, none of P.T. Danareksa Sekuritas and/or its affiliated companies and/or their respective employees and/or agents makes any representation or warranty (express or implied) or accepts any responsibility or liability as to, or in relation to, the accuracy or completeness of the information and opinions contained in this report or as to any information contained in this report or any other such information or opinions remaining unchanged after the issue thereof. We expressly disclaim any responsibility or liability (express or implied) of P.T. Danareksa Sekuritas, its affiliated companies and their respective employees and agents whatsoever and howsoever arising (including, without limitation for any claims, proceedings, action, suits, losses, expenses, damages or costs) which may be brought against or suffered by any person as a result of acting in reliance upon the whole or any part of the contents of this report and neither P.T. Danareksa Sekuritas, its affiliated companies or their respective employees or agents accepts liability for any errors, omissions or mis-statements, negligent or otherwise, in the report and any liability in respect of the report or any inaccuracy therein or omission therefrom which might otherwise arise is hereby expressly disclaimed. The information contained in this report is not to be taken as any recommendation made by P.T. Danareksa Sekuritas or any other person to enter into any agreement with regard to any investment mentioned in this document. This report is prepared for general circulation. It does not have regards to the specific person who may receive this report. In considering any investments you should make your own independent assessment and seek your own professional financial and legal advice.

Charoen Pokphand Indonesia Tbk (CPIN)

Call Buy

Last 3,040

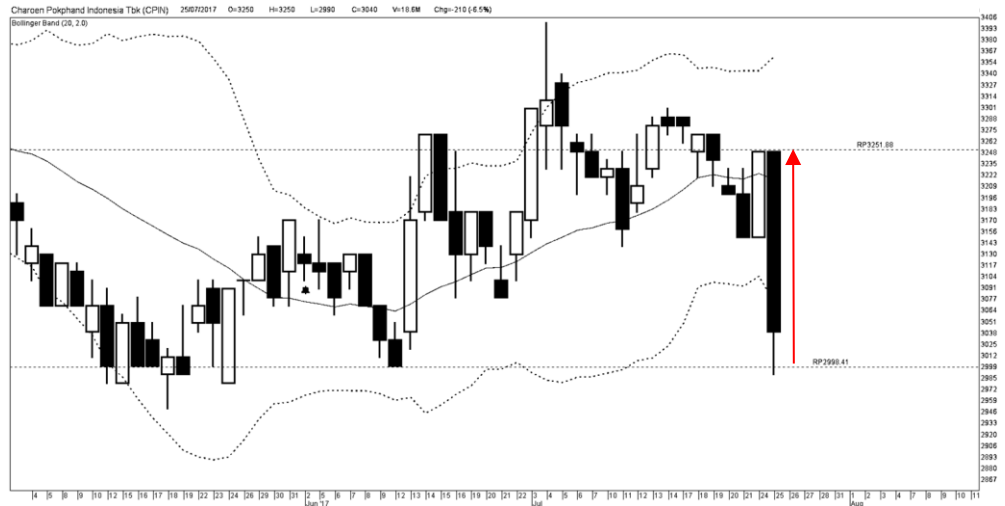
Target 3,250

Stop Loss 2,870

52wk Range 1,040 - 1,975

Highlight

Kinerja saham CPIN cenderung menguat untuk menguji harga 3,250 disertai dengan kinerja saham CPIN yang telah berada dalam kisaran level *support* setelah mengalami koreksi pelemahan sebelumnya



Kinerja saham CPIN



Kinerja saham CPIN

Resistance 3	3,613	Support 1	2,937
Resistance 2	3,353	Support 2	2,833
Resistance 1	3,197	Support 3	2,573
Pivot Point	3,093		

Support & Resistance saham CPIN

Lucky Bayu Purnomo
 Research Analyst
 (62-21) 2955 577 ext.3512
 lucky.purnomo@danareksa.com

Danareksa research report are also available at Reuters Multex and First Call Direct and Bloomberg

Disclaimer

The information contained in this report has been taken from sources which we deem reliable. However, none of P.T. Danareksa Sekuritas and/or its affiliated companies and/or their respective employees and/or agents makes any representation or warranty (express or implied) or accepts any responsibility or liability as to, or in relation to, the accuracy or completeness of the information and opinions contained in this report or as to any information contained in this report or any other such information or opinions remaining unchanged after the issue thereof. We expressly disclaim any responsibility or liability (express or implied) of P.T. Danareksa Sekuritas, its affiliated companies and their respective employees and agents whatsoever and howsoever arising (including, without limitation for any claims, proceedings, action, suits, losses, expenses, damages or costs) which may be brought against or suffered by any person as a result of acting in reliance upon the whole or any part of the contents of this report and neither P.T. Danareksa Sekuritas, its affiliated companies or their respective employees or agents accepts liability for any errors, omissions or mis-statements, negligent or otherwise, in the report and any liability in respect of the report or any inaccuracy therein or omission therefrom which might otherwise arise is hereby expressly disclaimed. The information contained in this report is not to be taken as any recommendation made by P.T. Danareksa Sekuritas or any other person to enter into any agreement with regard to any investment mentioned in this document. This report is prepared for general circulation. It does not have regards to the specific person who may receive this report. In considering any investments you should make your own independent assessment and seek your own professional financial and legal advice.

Japfa Comfeed Indonesia Tbk (JPFA)

Call Buy

Last 1,200

Target 1,430

Stop Loss 1,130

52wk Range 1,040 - 1,975

Highlight

Kinerja saham JPFA cenderung menguat untuk menguji harga 1,430 disertai dengan kinerja saham JPFA yang telah berada dalam kondisi jenuh jual atau *oversold* setelah mengalami koreksi pelemahan sebelumnya

Potensi tersebut disertai dengan kinerja harga saham JPFA yang berada dalam fase akumulasi beli dan berada pada kisaran level *support* dengan potensi *reversal* atau perbalikan arah

Lucky Bayu Purnomo
Research Analyst
(62-21) 2955 577 ext.3512
lucky.purnomo@danareksa.com

Danareksa research report are also available at Reuters Multex and First Call Direct and Bloomberg



Kinerja saham JPFA



Kinerja saham JPFA

Resistance 3	1,520	Support 1	1,150
Resistance 2	1,380	Support 2	1,100
Resistance 1	1,290	Support 3	960
Pivot Point	1,240		

Support & Resistance saham JPFA

Disclaimer

The information contained in this report has been taken from sources which we deem reliable. However, none of P.T. Danareksa Sekuritas and/or its affiliated companies and/or their respective employees and/or agents makes any representation or warranty (express or implied) or accepts any responsibility or liability as to, or in relation to, the accuracy or completeness of the information and opinions contained in this report or as to any information contained in this report or any other such information or opinions remaining unchanged after the issue thereof. We expressly disclaim any responsibility or liability (express or implied) of P.T. Danareksa Sekuritas, its affiliated companies and their respective employees and agents whatsoever and howsoever arising (including, without limitation for any claims, proceedings, action, suits, losses, expenses, damages or costs) which may be brought against or suffered by any person as a result of acting in reliance upon the whole or any part of the contents of this report and neither P.T. Danareksa Sekuritas, its affiliated companies or their respective employees or agents accepts liability for any errors, omissions or mis-statements, negligent or otherwise, in the report and any liability in respect of the report or any inaccuracy therein or omission therefrom which might otherwise arise is hereby expressly disclaimed. The information contained in this report is not to be taken as any recommendation made by P.T. Danareksa Sekuritas or any other person to enter into any agreement with regard to any investment mentioned in this document. This report is prepared for general circulation. It does not have regards to the specific person who may receive this report. In considering any investments you should make your own independent assessment and seek your own professional financial and legal advice.