

Indeks Harga Saham Gabungan (IHSG)

Signal Positive

Last 5.723

Target 5.750

52wk Range 4,754 - 5,874

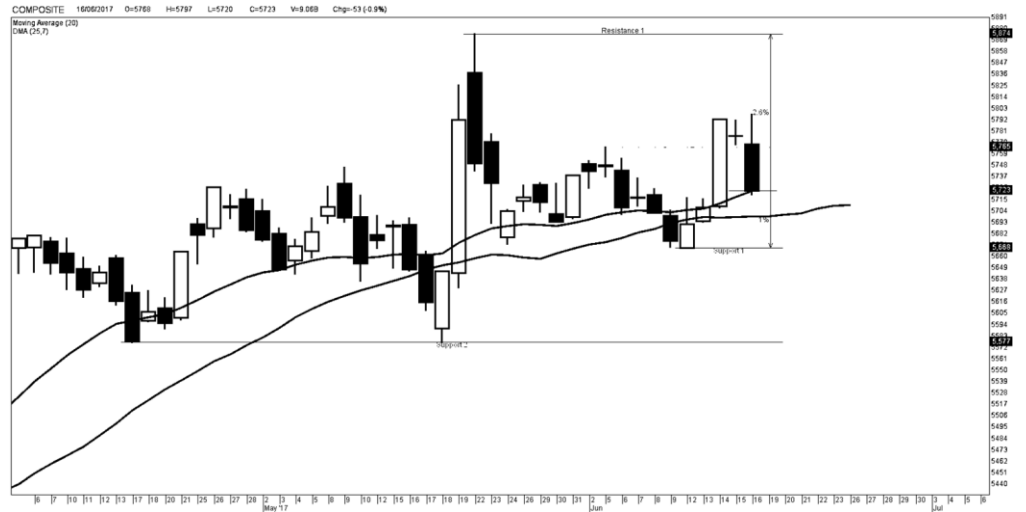
Highlight

Kinerja harian IHSG cenderung bergerak terbatas untuk menguji level 5.750 sebagai level *resistance*, dan 5.700 sebagai level *support*

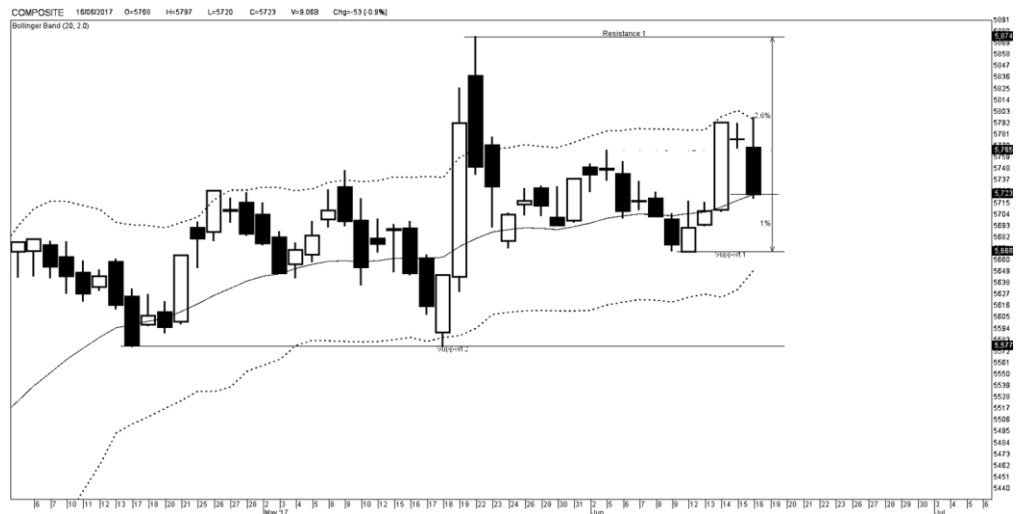
potensi tersebut di sertai dengan kinerja IHSG yang berada di atas rata rata selama 20 hari sebelumnya dengan potensi *reversal* atau perbalikan arah

Lucky Bayu Purnomo
Research Analyst
(62-21) 2955 577 ext.3512
lucky.purnomo@danareksa.com

Danareksa research report are also available at Reuters Multex and First Call Direct and Bloomberg



Kinerja IHSG



Kinerja IHSG

Resistance 3	5,805	Support 1	5,711
Resistance 2	5,765	Support 2	5,684
Resistance 1	5,752	Support 3	5,644
Pivot Point	5,725		

Support & Resistance IHSG

Disclaimer

The information contained in this report has been taken from sources which we deem reliable. However, none of P.T. Danareksa Sekuritas and/or its affiliated companies and/or their respective employees and/or agents makes any representation or warranty (express or implied) or accepts any responsibility or liability as to, or in relation to, the accuracy or completeness of the information and opinions contained in this report or as to any information contained in this report or any other such information or opinions remaining unchanged after the issue thereof.

We expressly disclaim any responsibility or liability (express or implied) of P.T. Danareksa Sekuritas, its affiliated companies and their respective employees and agents whatsoever and howsoever arising (including, without limitation for any claims, proceedings, action, suits, losses, expenses, damages or costs) which may be brought against or suffered by any person as a result of acting in reliance upon the whole or any part of the contents of this report and neither P.T. Danareksa Sekuritas, its affiliated companies or their respective employees or agents accepts liability for any errors, omissions or mis-statements, negligent or otherwise, in the report and any liability in respect of the report or any inaccuracy therein or omission therefrom which might otherwise arise is hereby expressly disclaimed. The information contained in this report is not to be taken as any recommendation made by P.T. Danareksa Sekuritas or any other person to enter into any agreement with regard to any investment mentioned in this document. This report is prepared for general circulation. It does not have regards to the specific person who may receive this report. In considering any investments you should make your own independent assessment and seek your own professional financial and legal advice.

Potensi Sektor konsumer dan saham pilihan

Signal Positive

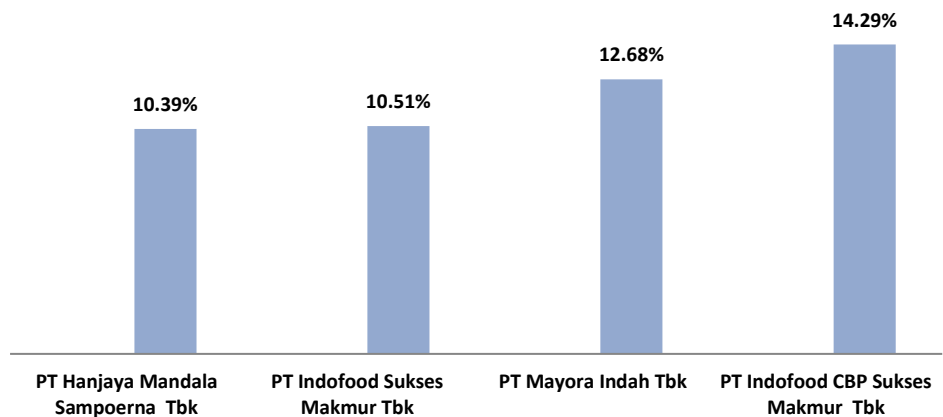
Highlight

Kinerja sektor konsumer cenderung menguat, disertai dengan trend Pertumbuhan sejak awal tahun 2017 berada dalam kondisi *uptrend*

Sementara potensi Pertumbuhan ICBP memiliki potensi Pertumbuhan tertinggi di bandingkan beberapa saham di sektor konsumer lainnya, antara lain MYOR, HSMP dan INDF



Kinerja sektor konsumer



Potensi saham sektor konsumer

Ticker	Call	Open Price	Close Price	Poin	Stop Loss	Potential
PT Indofood Sukses M Tbk	Buy	8325	9200	700	8080	10.51%
PT Indofood CBP Tbk	Buy	8750	10000	1250	8250	14.29%
PT Mayora Indah Tbk	Buy	2130	2400	270	2030	12.68%
PT HM Sampoerna Tbk	Buy	3830	4250	400	3625	10.39%

Disclaimer

The information contained in this report has been taken from sources which we deem reliable. However, none of P.T. Danareksa Sekuritas and/or its affiliated companies and/or their respective employees and/or agents makes any representation or warranty (express or implied) or accepts any responsibility or liability as to, or in relation to, the accuracy or completeness of the information and opinions contained in this report or as to any information contained in this report or any other such information or opinions remaining unchanged after the issue thereof.

We expressly disclaim any responsibility or liability (express or implied) of P.T. Danareksa Sekuritas, its affiliated companies and their respective employees and agents whatsoever and howsoever arising (including, without limitation for any claims, proceedings, action, suits, losses, expenses, damages or costs) which may be brought against or suffered by any person as a result of acting in reliance upon the whole or any part of the contents of this report and neither P.T. Danareksa Sekuritas, its affiliated companies or their respective employees or agents accepts liability for any errors, omissions or mis-statements, negligent or otherwise, in the report and any liability in respect of the report or any inaccuracy therein or omission therefrom which might otherwise arise is hereby expressly disclaimed. The information contained in this report is not taken as any recommendation made by P.T. Danareksa Sekuritas or any other person to enter into any agreement with regard to any investment mentioned in this document. This report is prepared for general circulation. It does not have regards to the specific person who may receive this report. In considering any investments you should make your own independent assessment and seek your own professional financial and legal advice.

Rekomendasi saham sektor konsumer

Lucky Bayu Purnomo
Research analyst
(62-21) 2955 577 ext.3512
lucky.purnomo@danareksa.com

Danareksa research report are also available at Reuters Multex and First Call Direct and Bloomberg