

# Indeks Harga Saham Gabungan (IHSG)

Signal Neutral

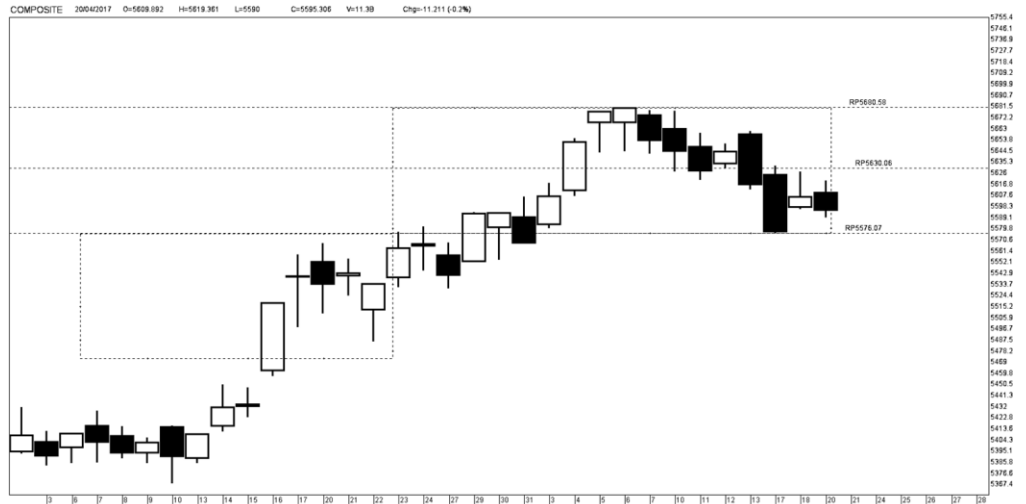
Last 5.595

Target 5.620 - 5.576

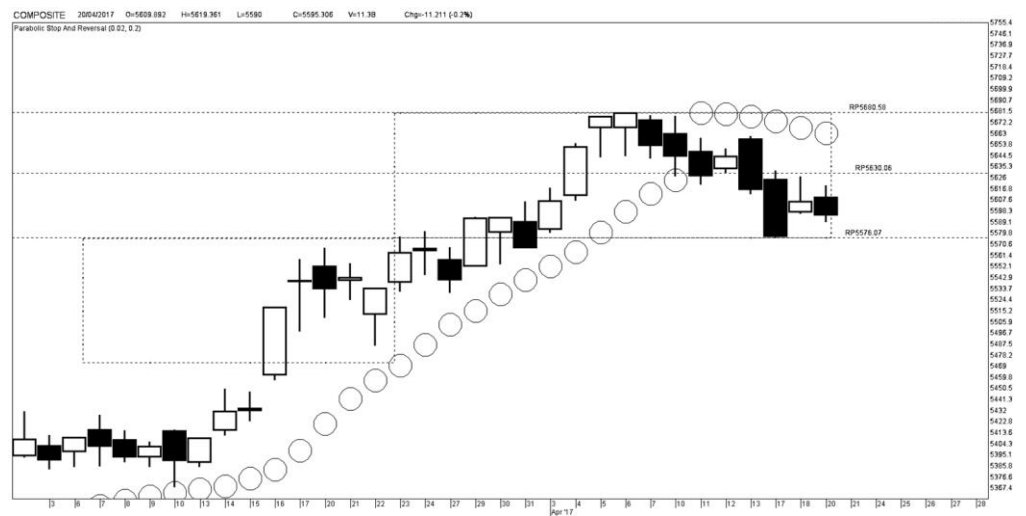
52wk Range 4,408 - 5,680

**Highlight**

Kinerja IHSG cenderung untuk menguji level *support* pada kisaran 5.676 dengan level *resistance* yang berada pada kisaran 5.620



Kinerja IHSG



Kinerja IHSG

Resistance 3	5,730	Support 1	5,622
Resistance 2	5,684	Support 2	5,592
Resistance 1	5,668	Support 3	5,546
Pivot Point	5,638		

Support & Resistance IHSG

**Disclaimer**

The information contained in this report has been taken from sources which we deem reliable. However, none of P.T. Danareksa Sekuritas and/or its affiliated companies and/or their respective employees and/or agents makes any representation or warranty (express or implied) or accepts any responsibility or liability as to, or in relation to, the accuracy or completeness of the information and opinions contained in this report or as to any information contained in this report or any other such information or opinions remaining unchanged after the issue thereof.

We expressly disclaim any responsibility or liability (express or implied) of P.T. Danareksa Sekuritas, its affiliated companies and their respective employees and agents whatsoever and howsoever arising (including, without limitation for any claims, proceedings, action, suits, losses, expenses, damages or costs) which may be brought against or suffered by any person as a result of acting in reliance upon the whole or any part of the contents of this report and neither P.T. Danareksa Sekuritas, its affiliated companies or their respective employees or agents accepts liability for any errors, omissions or mis-statements, negligent or otherwise, in the report and any liability in respect of the report or any inaccuracy therein or omission therefrom which might otherwise arise is hereby expressly disclaimed. The information contained in this report is not to be taken as any recommendation made by P.T. Danareksa Sekuritas or any other person to enter into any agreement with regard to any investment mentioned in this document. This report is prepared for general circulation. It does not have regards to the specific person who may receive this report. In considering any investments you should make your own independent assessment and seek your own professional financial and legal advice.

**Lucky Bayu Purnomo**  
Research Analyst  
(62-21) 2955 577 ext.3512  
lucky.purnomo@danareksa.com

Danareksa research report are also available at Reuters Multex and First Call Direct and Bloomberg

# Rekap

Rekap Laba (-Rugi) Emiten  
FY16 vs FY15 by Industri

## BANK & FINANCE

- BBRI Rp26.2t vs Rp25.4t
- BBCA Rp20.6t vs Rp18.0t
- BMRI Rp13.8t vs Rp20.3t
- BBNI Rp11.3t vs Rp9.07t
- BDMN Rp2.67t vs Rp2.39t
- BBTN Rp2.62t vs Rp1.85t
- PNBN Rp2.41t vs Rp1.41t
- BNGA Rp2.08t vs Rp428m
- BNII Rp1.95t vs Rp1.14t
- PNIN Rp1.55t vs Rp626m
- PNLF Rp1.53t vs Rp905m
- MEGA Rp1.16t vs Rp1.05t
- BJBR Rp1.15t vs Rp1.38t
- BJTM Rp1.03t vs Rp884m
- ADMF Rp1.01t vs Rp665m
- SDRA Rp309m vs Rp265m
- AGRO Rp103m vs Rp80.5m
- WOMF Rp60.3m vs Rp15.7m
- PNBS Rp19.5m vs Rp53.6m
- BABP Rp9.35m vs Rp8.18m
- BEKS -Rp405m vs -Rp331m
- BNLI -Rp6.48t vs Rp247m

## Outlook

Kinerja sektor keuangan dalam jangka pendek hingga jangka menengah cenderung menguat disertai dengan trend sektor keuangan yang berada dalam teritori up trend

**Lucky Bayu Purnomo**

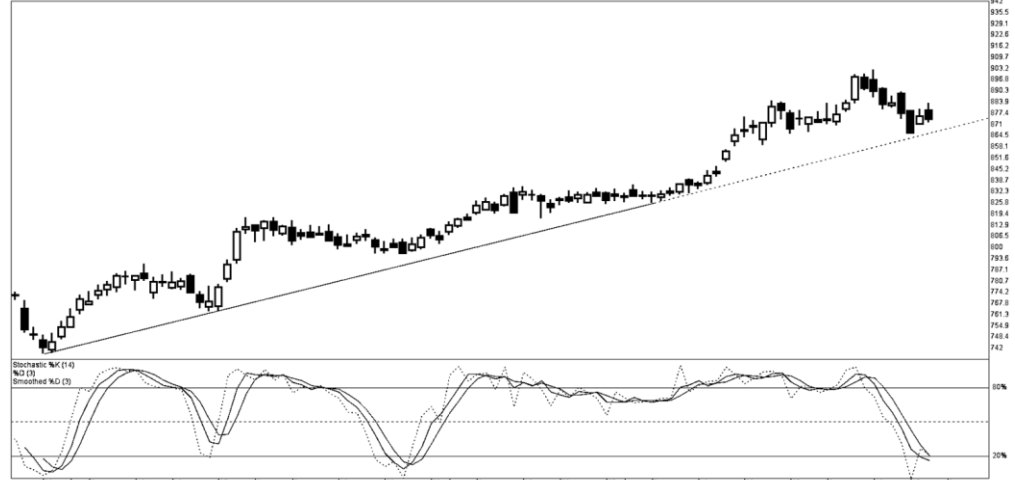
Research Analyst

(62-21) 2955 577 ext.3512

lucky.purnomo@danareksa.com

Danareksa research report are also available at Reuters Muxtex and First Call Direct and Bloomberg

FINANCE 20042017 O=879.223 H=882.829 L=872.8 C=873.892 V=0.918 Chg=-1.05 (-0.2%)



Kinerja harian sektor Bank & Finance

FINANCE (weekly) 20042017 O=876.712 H=882.829 L=866.16 C=873.892 V=3.948 Chg=-3.517 (-0.4%)



Kinerja mingguan sektor Bank & Finance

### Disclaimer

The information contained in this report has been taken from sources which we deem reliable. However, none of P.T. Danareksa Sekuritas and/or its affiliated companies and/or their respective employees and/or agents makes any representation or warranty (express or implied) or accepts any responsibility or liability as to, or in relation to, the accuracy or completeness of the information and opinions contained in this report or as to any information contained in this report or any other such information or opinions remaining unchanged after the issue thereof.

We expressly disclaim any responsibility or liability (express or implied) of P.T. Danareksa Sekuritas, its affiliated companies and their respective employees and agents whatsoever and howsoever arising (including, without limitation for any claims, proceedings, action, suits, losses, expenses, damages or costs) which may be brought against or suffered by any person as a result of acting in reliance upon the whole or any part of the contents of this report and neither P.T. Danareksa Sekuritas, its affiliated companies or their respective employees or agents accepts liability for any errors, omissions or mis-statements, negligent or otherwise, in the report and any liability in respect of the report or any inaccuracy therein or omission therefrom which might otherwise arise is hereby expressly disclaimed. The information contained in this report is not to be taken as any recommendation made by P.T. Danareksa Sekuritas or any other person to enter into any agreement with regard to any investment mentioned in this document. This report is prepared for general circulation. It does not have regards to the specific person who may receive this report. In considering any investments you should make your own independent assessment and seek your own professional financial and legal advice.

# Rekap

Rekap Laba (-Rugi) Emiten  
FY16 vs FY15 by Industri

## CONSTRUCTION

WSKT Rp1.71t vs Rp1.05t  
PTPP Rp1.02t vs Rp740m  
WIKA Rp1.01t vs Rp625m  
WSBP Rp635m vs Rp334m  
ADHI Rp313m vs Rp464m  
WTON Rp272m vs Rp174m  
TOTL Rp223m vs Rp191m  
IDPR Rp120m vs Rp228m  
NRCA Rp101m vs Rp198m  
ACST Rp68.3m vs Rp41.9m

## INFRASTRUCTURE RELATED

SMGR Rp4.52t vs Rp4.52t  
INTP Rp3.87t vs Rp4.35t  
JSMR Rp1.77t vs Rp1.45t  
AKRA Rp1.01t vs Rp1.03t  
CMNP Rp489m vs Rp454m  
SMBR Rp274m vs Rp348m  
BUKK Rp65.2m vs Rp58.6m  
RAJA \$6.50jt vs \$7.87jt  
SMCB -Rp284m vs Rp175m  
BNBR -Rp3.59t vs -Rp1.75t

## Outlook

Kinerja sektor infrastruktur & konstruksi dalam jangka pendek hingga jangka menengah cenderung menguat disertai dengan kinerja yang berada dalam kondisi *up trend*

**Lucky Bayu Purnomo**

Research Analyst

(62-21) 2955 577 ext.3512

lucky.purnomo@danareksa.com

Danareksa research report are also available at Reuters Multex and First Call Direct and Bloomberg



Kinerja harian sektor infrastructure



Kinerja mingguan sektor infrastructure

### Disclaimer

The information contained in this report has been taken from sources which we deem reliable. However, none of P.T. Danareksa Sekuritas and/or its affiliated companies and/or their respective employees and/or agents makes any representation or warranty (express or implied) or accepts any responsibility or liability as to, or in relation to, the accuracy or completeness of the information and opinions contained in this report or as to any information contained in this report or any other such information or opinions remaining unchanged after the issue thereof.

We expressly disclaim any responsibility or liability (express or implied) of P.T. Danareksa Sekuritas, its affiliated companies and their respective employees and agents whatsoever and howsoever arising (including, without limitation for any claims, proceedings, action, suits, losses, expenses, damages or costs) which may be brought against or suffered by any person as a result of acting in reliance upon the whole or any part of the contents of this report and neither P.T. Danareksa Sekuritas, its affiliated companies or their respective employees or agents accepts liability for any errors, omissions or mis-statements, negligent or otherwise, in the report and any liability in respect of the report or any inaccuracy therein or omission therefrom which might otherwise arise is hereby expressly disclaimed. The information contained in this report is not to be taken as any recommendation made by P.T. Danareksa Sekuritas or any other person to enter into any agreement with regard to any investment mentioned in this document. This report is prepared for general circulation. It does not have regards to the specific person who may receive this report. In considering any investments you should make your own independent assessment and seek your own professional financial and legal advice.