

HEADLINES & ANALYSIS

- A public rift between Thailand's central bank and government on interest rates shows just how much of a dilemma the baht has become for the economy. The Finance Ministry is pushing the Bank of Thailand to cut interest rates to stimulate growth, in light of the strength of the currency and low inflation. That's clashing with the bank's aims of minimizing financial instability and curbing household debt levels by keeping rates steady. (Bloomberg)
- Malaysia's currency buffers are among the weakest in Asia, Moody's Investors Service said, underscoring the nation's vulnerability if higher U.S. interest rates lead to capital outflows. External debt payments due this year and total non-resident deposits over one year are estimated at 151 percent of foreign reserves as of the end of 2016, according to Moody's. The ratio is 27 percent for the Philippines, making its buffers among the strongest in the region. (Bloomberg)
- China and Japan's combined holdings of Treasuries as a share of all foreign-held U.S. government debt rose for a second straight month, reaching the highest level since October last year. The Asian nations held 36.5 percent of all foreign-held debt in July, according to U.S. Treasury data released Monday. China owns \$1.17 trillion, just above Japan's \$1.11 trillion. Total foreign holdings of U.S. Treasuries rose to \$6.25 trillion, close to the all-time high of \$6.29 trillion set last year. (Bloomberg)

YIELD CURVE (%)

	TTM	18-Sep-17	-1 Day	Change	TTM	18-Sep-17	-1 Day	Change
3 months	4.463	4.458	0.005		15 years	7.164	7.143	0.022
6 months	4.938	4.933	0.005		16 years	7.213	7.189	0.024
1 year	5.521	5.524	-0.003		17 years	7.255	7.229	0.026
2 years	5.848	5.867	-0.020		18 years	7.293	7.265	0.028
3 years	5.952	5.980	-0.029		19 years	7.326	7.296	0.030
4 years	6.051	6.081	-0.030		20 years	7.355	7.324	0.031
5 years	6.172	6.199	-0.027		21 years	7.380	7.348	0.032
6 years	6.305	6.327	-0.022		22 years	7.403	7.370	0.033
7 years	6.440	6.456	-0.016		23 years	7.423	7.389	0.034
8 years	6.569	6.578	-0.009		24 years	7.442	7.406	0.035
9 years	6.688	6.691	-0.003		25 years	7.458	7.422	0.036
10 years	6.795	6.792	0.002		26 years	7.472	7.436	0.036
11 years	6.889	6.882	0.007		27 years	7.485	7.448	0.037
12 years	6.973	6.961	0.012		28 years	7.497	7.460	0.038
13 years	7.045	7.030	0.015		29 years	7.508	7.470	0.038
14 years	7.109	7.090	0.019		30 years	7.517	7.479	0.038

Source : Danareksa Sekuritas

MOST ACTIVE GOVERNMENT BONDS

Bond	Coupon	Maturity	Last Price	Yield	Volume (IDR bn)
FR0061	7.000	15-May-22	103.95	5.977	2,207.60
FR0056	8.375	15-Sep-26	111.50	6.542	1,457.25
FR0059	7.000	15-May-27	103.25	6.450	1,086.28
FR0053	8.250	15-Jul-21	107.65	6.025	912.89
FR0070	8.375	15-Mar-24	110.50	7.165	546.45

Sources: Bloomberg; Indonesia Stock Exchange (Volume)

MOST ACTIVE CORPORATE BONDS

Bond	Rating	Coupon	Maturity	Last Price	Yield	Volume
FIFA02BCN1	idAAA	9.250	24-Apr-18	101.85	9.08	90.00
SMRA01CN1	idA+	10.850	11-Dec-18	103.55	7.79	50.00
ADMF02CCN2	idAAA+	11.000	24-Oct-18	104.65	6.58	30.00
SIAGI01ACN1	A-(idn)	9.900	6-Jun-20	101.85	9.12	28.00
BMTR01ACN1	idA+	11.500	7-Jul-22	99.40	11.66	24.00

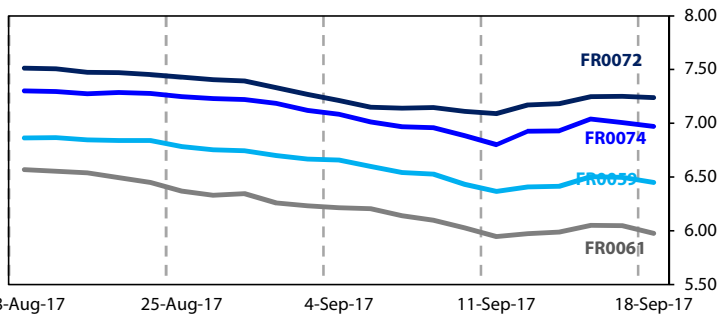
Coupon, Last Price & Yield are in %; Volume is in IDR bn; Rating code: id(Pefindo) & idn (Fitch Indonesia)

SOVEREIGN BOND YIELDS

Country	Tenor	Coupon (%)	18-Sep-17			Spread over UST YC (bps)			Country	Tenor	Coupon (%)	18-Sep-17			Spread over UST YC (bps)		
			18-Sep-17	-1 Mo	-3 Mo	18-Sep-17	-1 Mo	-3 Mo				18-Sep-17	-1 Mo	-3 Mo			
United States USD	2yr		1.400	1.470	1.500				Philippines PHP	2yr	6.000	3.650	3.765	3.850	225	244	249
	5yr		1.830	1.770	1.770					5yr	7.875	4.268	4.444	4.448	244	267	268
	10yr		2.230	2.190	2.160					10yr	11.375	4.642	4.700	4.673	241	251	251
German EUR	2yr	0.250	-0.691	-	-	-209	-	-	Thailand THB	2yr	3.125	1.502	1.576	1.626	10	25	27
	5yr	1.000	-0.264	-0.264	-	-209	-203	-		5yr	3.450	1.791	1.837	-	-4	7	-
	10yr	1.750	0.455	0.415	-	-178	-178	-		10yr	3.625	2.338	2.372	2.486	11	18	33
Indonesia USD	2yr	6.875	17.792	17.792	17.792	1,639	1,646	1,643	India INR	2yr	7.590	6.311	6.291	6.391	491	496	503
	5yr	5.875	2.108	2.170	2.309	28	40	54		5yr	7.280	6.558	6.493	6.561	473	472	479
	10yr	4.125	3.216	3.428	3.543	99	124	138		10yr	8.830	6.61	6.509	6.447	438	432	429
Brazil BRL	2yr	0.000	7.650	8.28	9.23	625	695	787	Malaysia MYR	3yr	3.172	3.34	3.399	-	180	193	-
	5yr	10.000	8.678	9.19	9.94	728	786	858		5yr	3.260	3.513	3.595	3.572	168	183	180
	10yr	10.000	9.796	10.13	10.55	840	880	919		10yr	4.181	3.869	3.985	3.891	164	180	173

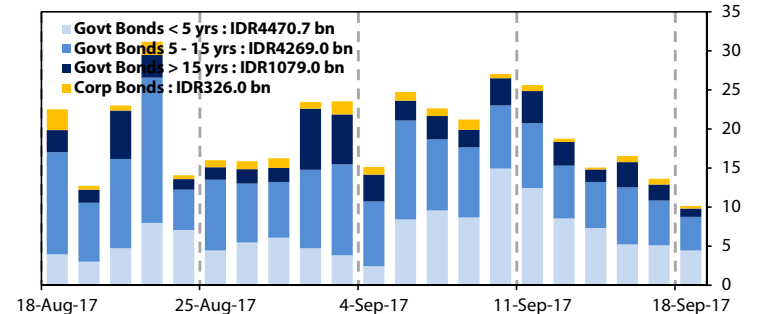
Sources: Bloomberg (Current Yield Curve), US Treasury

YIELD OF GOVERNMENT BOND BENCHMARK (%)



Sources: Bloomberg

TRADING VOLUME BY MATURITY (IDR TRILLION)



Sources: Indonesia Stock Exchange

KEY TARGETED RATE

Country	Rate (%)	Last Change	Change	Inflation Rate (%)	Real Interest Rate (%)
Indonesia (SDRR)	4.50	22-Aug-17	-25bps ↓	3.82	0.68
US (Fed Fund Rate)	1.25	14-Jun-17	25bps ↑	1.90	-0.65
Euro Region	0.00	16-Mar-16	-5bps ↓	1.70	-1.70
Japan	0.10	19-Dec-08	-20bps ↓	0.40	-0.30
India (Repo Rate)	6.00	2-Aug-17	-25bps ↓	1.79	4.21
Malaysia	3.00	13-Jul-16	-25bps ↓	3.20	-0.20
Philippines	3.00	16-May-16	-100bps ↓	3.10	-0.10
Thailand	3.00	25-Jan-12	-25bps ↓	0.32	2.68
Singapore	0.08	31-Dec-13	5bps ↑	0.60	-0.52
Brazil	8.25	6-Sep-17	-100bps ↓	2.46	5.79

Sources: Bloomberg

GLOBAL STOCK MARKETS

Stock Index	18-Sep-17	-1 Day	Return (%)				
			Daily	WoW	MoM	YoY	YTD
Indonesia (JCI)	5,885 ↑	5,872	0.21	0.22	-0.16	11.71	11.10
Dow Jones (DJIA)	22,331 ↑	22,268	0.28	1.24	3.03	23.22	13.00
London (FTSE 100)	7,253 ↑	7,215	0.52	-2.16	-0.97	8.09	1.55
Nikkei 225	19,910 →	19,910	0.00	1.86	2.26	20.52	4.16
Hang Seng (HIS)	28,160 ↑	27,808	1.27	0.73	4.11	20.67	28.00
Malaysia (KLCI)	1,784 ↓	1,786	-0.15	0.05	0.42	7.91	8.65
Philippines (PSEi)	8,294 ↑	8,181	1.38	3.04	3.46	9.80	21.25
Thailand (SET)	1,670 ↑	1,661	0.58	1.99	6.62	12.92	8.25
Singapore (STI)	3,242 ↑	3,210	1.01	0.41	-0.31	14.66	12.53
Brazil (BOVESPA)	75,990 ↑	75,757	0.31	2.25	10.59	33.13	26.17

Sources: Bloomberg & Danareksa

CURRENCY & COMMODITY

Price	18-Sep-17	-1 Day	-1 Week	-1 Month	EoP 2016
USD/IDR	13,255 ↑	13,240	13,156	13,362	13,473
Brent	55.08 ↓	55.3	53.76	52.47	55.41
WTI Crude Oil	49.91 ↑	49.89	48.07	48.51	53.72

Sources: Bloomberg

PERFORMANCE OF IDR GOVERNMENT BONDS

As of	Average YTM (%)	Change (bps)	Return (%)				
			Daily	WoW	MoM	YoY	YTD
18-Sep-17	6.33		0.14	-0.46	3.14	10.23	14.04
-1 Day	6.35	↓ -1.9	0.02	-0.16	3.03	10.28	13.88
-1 Week	6.27	↑ 6.7	0.45	1.52	3.80	10.24	14.57
-1 Month	6.73	↓ -40.0	0.11	0.23	1.47	6.64	10.72
-1 Year	7.08	↓ -74.0	0.19	-0.56	-0.23	25.58	18.02

Sources: Danareksa

VALUATIONS OF GOVERNMENT BONDS

Bond	Issue Date	Mature Date	Coupon	TTM	Modified Duration	YTM	(Change)	Prev Closing Price	Fair Yield Range	Fair Price Range	Last Trade					
											Date	Price	Vol (IDR bn)	Freq		
FR0066	25-Oct-12	15-May-18	5.25	0.7	0.63	5.25	↑ 3.5bps	99.99	5.173	5.329	99.94	100.04	18-Sep-17	100.10	110.00	3
FR0032	1-Sep-05	15-Jul-18	15.00	0.8	0.77	4.99	↓ -1.4bps	107.91	4.953	5.231	107.75	107.99	1-Aug-17	108.40	80.00	2
FR0038	24-Aug-06	15-Aug-18	11.60	0.9	0.86	5.34	→ 0.0bps	105.46	5.232	5.484	105.33	105.56	6-Sep-17	105.30	6.60	1
FR0048	27-Sep-07	15-Sep-18	9.00	1.0	0.94	5.51	↓ -2.8bps	103.30	5.474	5.700	103.14	103.36	8-Sep-17	103.20	70.00	1
FR0069	29-Aug-13	15-Apr-19	7.88	1.6	1.43	5.62	↓ -6.2bps	103.33	5.663	5.814	103.05	103.28	18-Sep-17	103.43	38.90	3
FR0036	20-Apr-06	15-Sep-19	11.50	2.0	1.79	5.87	↓ -1.4bps	110.40	5.706	5.935	110.31	110.76	14-Sep-17	109.73	5.00	1
FR0031	16-Jun-05	15-Nov-20	11.00	3.2	2.62	5.93	↓ -0.8bps	114.38	5.898	5.981	114.23	114.49	18-Sep-17	114.50	2.00	1
FR0034	26-Jan-06	15-Jun-21	12.80	3.7	2.99	5.97	↓ -1.9bps	122.53	5.970	6.036	122.33	122.57	18-Sep-17	122.75	2.00	1
FR0053	8-Jul-10	15-Jul-21	8.25	3.8	3.24	6.03	↓ -3.0bps	107.48	5.934	6.082	107.28	107.80	18-Sep-17	107.65	912.89	41
FR0061	6-Oct-11	15-May-22	7.00	4.7	3.86	5.98	↓ -7.2bps	104.09	5.952	6.055	103.78	104.20	18-Sep-17	103.95	2,207.60	30
FR0035	16-Feb-06	15-Jun-22	12.90	4.7	3.62	6.17	↓ -1.0bps	127.26	6.078	6.192	127.17	127.71	24-Aug-17	110.05	35.50	3
FR0043	22-Feb-07	15-Jul-22	10.25	4.8	3.82	6.21	↑ 0.7bps	116.60	6.106	6.208	116.61	117.07	15-Sep-17	116.51	4.00	1
FR0063	13-Aug-12	15-May-23	5.63	5.7	4.67	6.26	↓ -2.5bps	97.00	6.233	6.335	96.66	97.13	15-Sep-17	97.14	594.54	7
FR0046	19-Jul-07	15-Jul-23	9.50	5.8	4.49	6.35	→ 0.0bps	115.13	6.249	6.421	114.75	115.65	15-Sep-17	115.31	18.00	1
FR0039	24-Aug-06	15-Aug-23	11.75	5.9	4.43	6.35	↓ -0.5bps	126.25	6.325	6.415	125.88	126.39	14-Jul-17	123.25	20.95	1
FR0070	29-Aug-13	15-Mar-24	8.38	6.5	5.05	6.43	↓ -3.5bps	110.20	6.347	6.473	109.95	110.66	18-Sep-17	110.50	546.45	13
FR0044	19-Apr-07	15-Sep-24	10.00	7.0	5.19	6.47	↓ -4.2bps	119.61	6.410	6.606	118.76	119.98	18-Sep-17	119.50	430.00	1
FR0040	21-Sep-06	15-Sep-25	11.00	8.0	5.64	6.53	↓ -0.3bps	127.46	6.508	6.618	126.86	127.65	12-Sep-17	124.25	0.70	1
FR0037	18-May-06	15-Sep-26	12.00	9.0	6.03	6.57	↓ -2.2bps	136.39	6.564	6.687	135.47	136.48	24-Aug-17	133.00	5.00	1
FR0056	23-Sep-10	15-Sep-26	8.38	9.0	6.44	6.54	↓ -1.3bps	112.31	6.485	6.684	111.29	112.73	18-Sep-17	111.50	1,457.25	33
FR0059	15-Sep-11	15-May-27	7.00	9.7	6.85	6.45	↓ -4.8bps	103.90	6.407	6.546	103.20	104.21	18-Sep-17	103.25	1,086.28	46
FR0042	25-Jan-07	15-Jul-27	10.25	9.8	6.50	6.68	↓ -1.2bps	125.36	6.669	6.766	124.69	125.49	7-Sep-17	121.72	17.00	7
FR0047	30-Aug-07	15-Feb-28	10.00	10.4	6.81	6.80	↑ 8.9bps	123.54	6.700	6.848	123.17	124.43	18-Sep-17	124.30	38.50	3
FR0064	13-Aug-12	15-May-28	6.13	10.7	7.48	6.80	↓ -1.1bps	94.93	6.728	6.849	94.57	95.45	18-Sep-17	95.50	46.00	7
FR0071	12-Sep-13	15-Mar-29	9.00	11.5	7.45	6.91	↓ -0.5bps	116.36	6.783	6.957	115.98	117.50	18-Sep-17	114.95	65.44	11
FR0052	20-Aug-09	15-Aug-30	10.50	12.9	7.70	7.01	↑ 0.1bps	129.30	6.973	7.112	128.29	129.68	13-Sep-17	130.00	1.38	2
FR0073	6-Aug-15	15-May-31	8.75	13.7	8.11	7.01	↑ 0.8bps	115.10	6.886	7.044	114.79	116.32	18-Sep-17	114.69	93.92	11
FR0074	10-Nov-16	15-Aug-32	7.50	14.9	8.99	6.97	↓ -3.4bps	104.84	6.855	7.065	103.96	105.95	18-Sep-17	105.00	244.83	48
FR0054	22-Jul-10	15-Jul-31	9.50	13.8	8.12	7.09	↓ -1.2bps	120.99	7.026	7.182	120.09	121.64	18-Sep-17	119.25	0.50	1
FR0058	21-Jul-11	15-Jun-32	8.25	14.7	8.61	7.12	↓ -0.7bps	110.15	7.058	7.190	109.52	110.80	18-Sep-17	109.50	8.35	9
FR0065	30-Aug-12	15-May-33	6.63	15.7	9.25	7.19	↓ -0.1bps	94.77	7.101	7.223	94.43	95.53	18-Sep-17	95.45	181.85	19
FR0068	1-Aug-13	15-Mar-34	8.38	16.5	9.23	7.30	↓ -1.1bps	110.25	7.096	7.335	109.86	112.31	18-Sep-17	111.25	83.97	20
FR0072	9-Jul-15	15-May-36	8.25	18.7	9.64	7.24	↓ -1.3bps	110.24	7.032	7.303	109.56	112.53	18-Sep-17	110.20	462.52	44
FR0045	24-May-07	15-May-37	9.75	19.7	9.51	7.35	↑ 0.1bps	124.74	7.311	7.420	123.88	125.21	13-Sep-17	125.75	0.20	1
FR0050	24-Jan-08	15-Jul-38	10.50	20.8	9.76	7.37	↑ 0.6bps	133.10	7.305	7.543	130.79	133.89	14-Sep-17	132.00	1.14	2
FR0057	21-Apr-11	15-May-41	9.50	23.7	10.33	7.41	↑ 5.8bps	123.18	7.352	7.538	121.49	123.90	13-Sep-17	124.00	47.76	12
FR0062	9-Feb-12	15-Apr-42	6.38	24.6	11.17	7.48	↑ 3.8bps	87.68	7.415	7.508	87.37	88.31	18-Sep-17	87.30	120.50	7
FR0067	18-Jul-13	15-Feb-44	8.75	26.4	11.09	7.48	→ 0.0bps	114.75	7.438	7.677	112.06	115.06	14-Sep-17	114.70	108.93	35
ORI011	22-Oct-14	15-Oct-17	8.50	0.1	-	2.94	↑ 14.6bps	100.39	3.347	3.867	100.35	100.39	18-Sep-17	99.95	2.04	2
ORI012	21-Oct-15	15-Oct-18	9.00	1.1	-	5.51	↑ 2.0bps	103.61	5.392	5.592	103.55	103.76	18-Sep-17	103.10	6.93	15
ORI013	26-Oct-16	15-Oct-19	6.60	2.1	-	5.95	↓ -0.8bps	101.27	5.872	6.018	101.13	101.42	18-Sep-17	100.00	279.25	94
IFR0002	26-Aug-08	15-Aug-18	11.95	0.9	0.87	3.43	↓ -2.4bps	107.50	3.427	3.650	107.34	107.55	28-Aug-17	103.95	2.00	2
IFR0008	15-Apr-10	15-Mar-20	8.80	2.5	2.21	7.35	↓ -0.2bps	103.25	6.879	7.400	103.13	104.33	5-May-14	103.65	5.00	3
IFR0007	1-Apr-10	15-Jan-25	10.25	7.3	5.19	7.67	→ 0.0bps	114.25	7.247	7.767	113.65	116.81	17-Jun-16	115.12	25.00	1
IFR0006	21-Jan-10	15-Mar-30	10.25	12.5	7.40	8.12	↓ -0.1bps	116.50	7.737	8.257	115.35	119.90	15-Sep-17	121.25	28.00	5
IFR0010	3-Mar-11	15-Feb-36	10.00	18.4	9.23	7.63	↑ 6.7bps	123.17	7.462	7.982	119.28	125.17	23-Aug-17	120.00	1.01	1
PBS001	16-Feb-12	15-Feb-18	4.50	0.4	0.39	8.27	↑ 2.5bps	98.50	7.429	7.949	98.63	98.83	15-Mar-17	97.65	19.14	6
PBS002	2-Feb-12	15-Jan-22	5.45	4.3	3.74	6.40	↓ -15.4bps	96.45	6.480	7.000	94.29	96.16	11-Jul-17	93.70	50.00	1
PBS003	2-Feb-12	15-Jan-27	6.00	9.3	6.87	7.02	↓ -9.3bps	93.10	6.939	7.144	92.30	93.62	23-Aug-17	90.80	10.00	3
PBS004	16-Feb-12	15-Feb-37	6.10	19.4	10.47	7.61	↓ -75.2bps	84.85	7.504	8.024	81.22	85.76	14-Sep-17	85.85	7.00	3
PBS005	2-May-13	15-Apr-43	6.75	25.6	10.93	7.83	↑ 5.0bps	88.15	7.600	7.871	87.73	90.47	31-Aug-17	86.05	4.00	2
PBS006	19-Sep-13	15-Sep-20	8.25	3.0	2.64	6.08	→ 0.0bps	105.84	6.034	6.191	105.54	105.98	15-Sep-17	105.50	72.00	5
PBS009	30-Jul-15	25-Jan-18	7.75	0.4	0.34	4.58	↓ -25.9bps	101.06	4.702	5.053	100.91	101.03	15-Sep-17	101.09	300.00	1
PBS011	14-Jan-16	15-Aug-23	8.75	5.9	4.61	6.65	↓ -58.7bps	110.10	6.720	7.240	107.14	109.76	18-Sep-17	110.07	130.49	6
PBS012	28-Jan-16	15-Nov-31	8.88	14.2	8.16	7.38	↓ -0.4bps	112.99	7.353	7.627	110.68	113.24	18-Sep-17	113.55	121.00	9
PBS013	6-Oct-16	15-May-19	6.25	1.7	1.52	5.98	↑ 0.9bps	100.42	5.957	6.260	99.97	100.45	15-Sep-17	100.37	1,053.00	11
PBS014	6-Oct-16	15-May-21	6.50	3.7	3.15	6.34	↑ 2.2bps	100.50	6.400	6.921	98.65	100.31	18-Sep-17	100.55	100.00	1
SR007	11-Mar-15	11-Mar-18	8.25	0.5	-	4.63	↑ 4.4bps	101.70	4.564	5.084	101.50	101.75	18-Sep-17	101.25	3.91	7
SR008	10-Mar-16	10-Mar-19	8.30	1.5	-	5.88	↑ 4.0bps	103.41	5.793	5.919	103.36	103.54	18-Sep-17	102.90	24.60	13
SR009	22-Mar-17	10-Mar-20	6.90	2.5	2.16	6.07	↑ 0.8bps	101.89	5.969	6.166	101.59	102.04	18-Sep-17	101.90	310.41	28

*Val: Valuation based on ENSS Yield Curve; MDur (Modified Duration) is in year; Coupon, Price, & Yield are in %