

### HEADLINES & ANALYSIS

- Bank of England officials aren't the only ones feeling a bit more bullish about the UK economy. The Centre for Economics and Business Research upgraded its outlook for the nation's economy Monday, citing a pickup in manufacturing and a view that the worst of the consumer-spending squeeze has passed. The group now expects UK Growth of 1.6% this year and 1.4% in 2018, an increase from 1.3% and 1.2%, previously. (Bloomberg)
- The kiwi dollar has dropped whenever opinion polls show the main opposition Labour Party is ahead, while the currency jumped a full U.S. cent after a survey last week put the ruling National Party in the lead. The question is whether investors, including those offshore who hold 61 percent of New Zealand government bonds, simply dislike uncertainty or really think Labour's policies would deliver poorer economic outcomes. (Bloomberg)
- S&P raised its forecast for Portugal's economic growth and revised the country's rating to BBB- from BB+, which was one level below investment grade, according to a statement released on Friday. The outlook is stable. Portugal had been rated junk by S&P since January 2012, when the country was going through a bailout program provided by the European Union and the International Monetary Fund. (Bloomberg)

### YIELD CURVE (%)

TTM	15-Sep-17	-1 Day	Change	TTM	15-Sep-17	-1 Day	Change
3 months	4.458	4.450	0.008	15 years	7.143	7.115	0.028
6 months	4.933	4.916	0.017	16 years	7.189	7.161	0.028
1 year	5.524	5.491	0.033	17 years	7.229	7.202	0.027
2 years	5.867	5.818	0.050	18 years	7.265	7.238	0.027
3 years	5.980	5.926	0.055	19 years	7.296	7.270	0.026
4 years	6.081	6.027	0.054	20 years	7.324	7.298	0.026
5 years	6.199	6.149	0.050	21 years	7.348	7.322	0.026
6 years	6.327	6.281	0.046	22 years	7.370	7.344	0.025
7 years	6.456	6.413	0.043	23 years	7.389	7.364	0.025
8 years	6.578	6.539	0.039	24 years	7.406	7.381	0.025
9 years	6.691	6.654	0.037	25 years	7.422	7.397	0.025
10 years	6.792	6.758	0.034	26 years	7.436	7.411	0.025
11 years	6.882	6.849	0.032	27 years	7.448	7.424	0.025
12 years	6.961	6.930	0.031	28 years	7.460	7.435	0.024
13 years	7.030	7.000	0.030	29 years	7.470	7.446	0.024
14 years	7.090	7.061	0.029	30 years	7.479	7.455	0.024

Source : Danareksa Sekuritas

### MOST ACTIVE GOVERNMENT BONDS

Bond	Coupon	Maturity	Last Price	Yield	Volume (IDR bn)
FR0059	7.000	15-May-27	103.79	6.498	1,598.88
FR0056	8.375	15-Sep-26	112.00	6.555	1,295.00
PBS014	6.500	15-May-21	100.63	6.320	1,056.00
PBS013	6.250	15-May-19	100.37	5.966	1,053.00
FR0075	7.500	15-May-38	103.80	7.165	993.24

Sources: Bloomberg; Indonesia Stock Exchange (Volume)

### MOST ACTIVE CORPORATE BONDS

Bond	Rating	Coupon	Maturity	Last Price	Yield	Volume
BBRI01BCN2	idAAA	9.250	4-Feb-19	102.75	7.14	100.00
BEXI01CCN1	idAAA	8.500	20-Dec-18	102.35	6.55	85.50
BFIN02CCN2	A+(idn)	10.875	19-Mar-18	102.00	10.66	60.00
WOMF01BCN3	AA(idn)	10.250	2-Apr-18	102.00	10.05	55.00
BNLI01SBCN1	idAA-	8.900	15-Jun-19	100.50	8.59	41.00

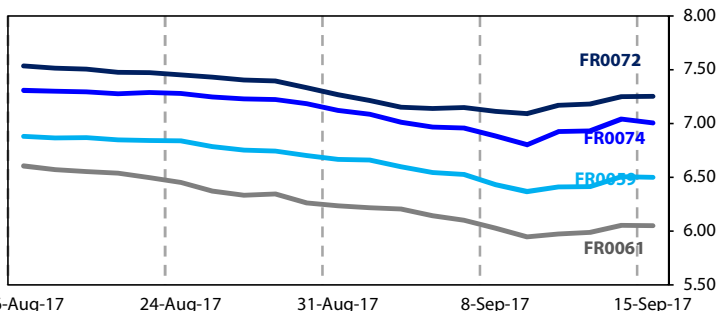
\*Current yield; Coupon, Last Price & Yield are in %; Volume is in IDR bn; Rating code: id(Pefindo) & idn (Fitch Indonesia)

### SOVEREIGN BOND YIELDS

Country	Tenor	Coupon (%)	15-Sep-17	-1 Mo	-3 Mo	Spread over UST YC (bps)			Country	Tenor	Coupon (%)	15-Sep-17	-1 Mo	-3 Mo	Spread over UST YC (bps)		
						15-Sep-17	-1 Mo	-3 Mo							15-Sep-17	-1 Mo	-3 Mo
United States	2yr		1.390	1.490	1.480				Philippines	2yr	6.000	3.643	3.786	3.772	225	246	245
	5yr		1.810	1.790	1.750					5yr	7.875	4.233	4.469	4.432	242	268	268
	10yr		2.200	2.230	2.160					10yr	11.375	4.592	4.700	4.691	239	247	253
German	2yr	0.250	-0.699	-	-	-209	-	-	Thailand	2yr	3.125	1.502	1.578	1.602	11	25	28
	5yr	1.000	-0.277	-0.247	-	-209	-204	-		5yr	3.450	1.801	1.889	-	-1	10	-
	10yr	1.750	0.433	0.445	-	-177	-179	-		10yr	3.625	2.341	2.444	2.426	14	21	27
Indonesia	2yr	6.875	17.792	17.792	17.792	1,640	1,646	1,647	India	2yr	7.590	6.288	6.294	6.386	490	496	507
	5yr	5.875	2.115	2.167	2.316	31	38	57		5yr	7.280	6.549	6.502	6.6	474	471	485
	10yr	4.125	3.211	3.452	3.543	101	122	138		10yr	8.830	6.598	6.533	6.491	440	430	433
Brazil	2yr	0.000	7.723	8.26	9.25	633	693	793	Malaysia	3yr	3.172	3.332	3.448	-	180	196	-
	5yr	10.000	8.705	9.15	9.92	732	782	860		5yr	3.260	3.505	3.628	3.568	170	184	182
	10yr	10.000	9.822	10.10	10.48	843	877	916		10yr	4.181	3.863	4.003	3.889	166	177	173

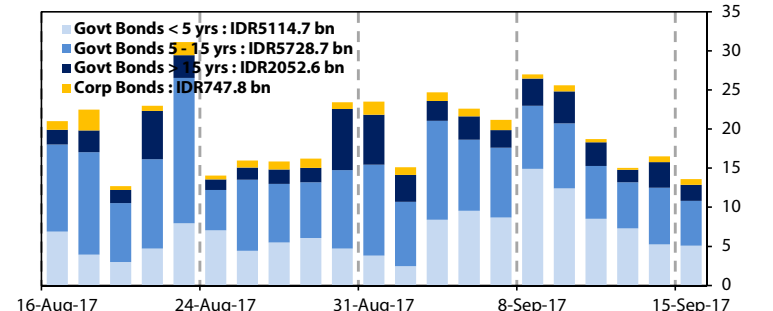
Sources: Bloomberg (Current Yield Curve), US Treasury

### YIELD OF GOVERNMENT BOND BENCHMARK (%)



Sources: Bloomberg

### TRADING VOLUME BY MATURITY (IDR TRILLION)



Sources: Indonesia Stock Exchange

### KEY TARGETED RATE

Country	Rate (%)	Last Change	Change	Inflation Rate (%)	Real Interest Rate (%)
Indonesia (SDRR)	4.50	22-Aug-17	-25bps ↓	3.82	0.68
US (Fed Fund Rate)	1.25	14-Jun-17	25bps ↑	1.90	-0.65
Euro Region	0.00	16-Mar-16	-5bps ↓	1.50	-1.50
Japan	0.10	19-Dec-08	-20bps ↓	0.40	-0.30
India (Repo Rate)	6.00	2-Aug-17	-25bps ↓	1.79	4.21
Malaysia	3.00	13-Jul-16	-25bps ↓	3.20	-0.20
Philippines	3.00	16-May-16	-100bps ↓	3.10	-0.10
Thailand	3.00	25-Jan-12	-25bps ↓	0.32	2.68
Singapore	0.08	31-Dec-13	5bps ↑	0.60	-0.52
Brazil	8.25	6-Sep-17	-100bps ↓	2.46	5.79

Sources: Bloomberg

### GLOBAL STOCK MARKETS

Stock Index	15-Sep-17	-1 Day	Return (%)				
			Daily	WoW	MoM	YoY	YTD
Indonesia (JCI)	5,872 ↑	5,852	0.35	0.26	-0.33	11.52	10.87
Dow Jones (DJIA)	22,268 ↑	22,203	0.29	2.16	1.11	22.27	12.68
London (FTSE 100)	7,215 ↓	7,295	-1.10	-2.20	-2.93	7.21	1.02
Nikkei 225	19,910 ↑	19,807	0.52	3.29	0.91	21.36	4.16
Hang Seng (HIS)	27,808 ↑	27,777	0.11	0.50	1.45	19.16	26.39
Malaysia (KLCI)	1,786 ↑	1,781	0.28	0.36	0.71	8.07	8.81
Philippines (PSEi)	8,181 ↑	8,145	0.44	1.97	1.67	6.13	19.59
Thailand (SET)	1,661 ↑	1,659	0.09	1.52	5.93	13.47	7.62
Singapore (STI)	3,210 ↓	3,221	-0.35	-0.59	-2.12	14.40	11.41
Brazil (BOVESPA)	75,757 ↑	74,657	1.47	3.66	10.44	30.82	25.78

Sources: Bloomberg & Danareksa

### CURRENCY & COMMODITY

Price	15-Sep-17	-1 Day	-1 Week	-1 Month	EoP 2016
USD/IDR	13,240 ↓	13,251	13,185	13,377	13,473
Brent	55.3 ↑	55.09	53.58	49.94	55.41
WTI Crude Oil	49.89 →	49.89	47.48	46.78	53.72

Sources: Bloomberg

### PERFORMANCE OF IDR GOVERNMENT BONDS

As of	Average YTM (%)	Change (bps)	Return (%)				
			Daily	WoW	MoM	YoY	YTD
15-Sep-17	6.35		0.02	-0.15	3.03	10.28	13.88
-1 Day	6.36	↓ -0.1	-0.33	0.16	3.08	10.25	13.85
-1 Week	6.33	↑ 2.7	0.34	1.42	3.46	9.62	14.05
-1 Month	6.75	↓ -39.4	0.03	0.10	1.48	6.67	10.60
-1 Year	7.11	↓ -75.2	-0.01	-0.75	-0.37	24.88	17.79

Sources: Danareksa

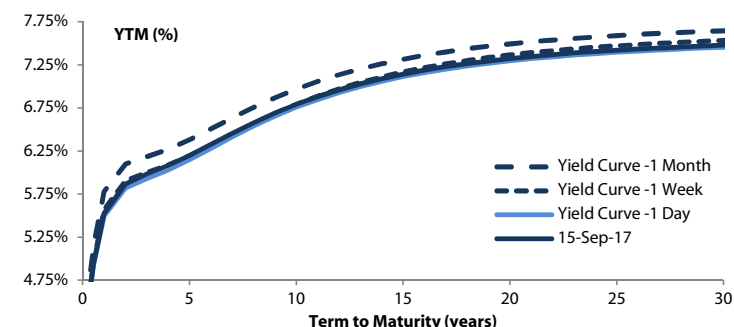
VALUATIONS OF GOVERNMENT BONDS

Bond	Issue Date	Mature Date	Coupon	TTM	Modified Duration	YTM	(Change)	Prev Closing Price	Fair Yield Range	Fair Price Range	Last Trade					
											Date	Price	Vol (IDR bn)	Freq		
FR0066	25-Oct-12	15-May-18	5.25	0.7	0.64	5.22	↓ -0.5bps	100.01	5.179	5.336	99.94	100.04	15-Sep-17	100.08	190.22	9
FR0032	1-Sep-05	15-Jul-18	15.00	0.8	0.78	5.00	↓ -15.0bps	107.92	4.976	5.251	107.81	108.05	1-Aug-17	108.40	80.00	2
FR0038	24-Aug-06	15-Aug-18	11.60	0.9	0.87	5.34	→ 0.0bps	105.46	5.241	5.494	105.37	105.60	6-Sep-17	105.30	6.60	1
FR0048	27-Sep-07	15-Sep-18	9.00	1.0	0.95	5.54	↓ -0.8bps	103.29	5.491	5.711	103.15	103.37	8-Sep-17	103.20	70.00	1
FR0069	29-Aug-13	15-Apr-19	7.88	1.6	1.43	5.68	↓ -0.8bps	103.25	5.703	5.807	103.08	103.23	15-Sep-17	103.30	356.85	13
FR0036	20-Apr-06	15-Sep-19	11.50	2.0	1.80	5.89	↓ -1.8bps	110.39	5.726	5.950	110.32	110.77	14-Sep-17	109.73	5.00	1
FR0031	16-Jun-05	15-Nov-20	11.00	3.2	2.63	5.94	↓ -1.3bps	114.36	5.930	6.012	114.17	114.42	15-Sep-17	114.30	90.00	1
FR0034	26-Jan-06	15-Jun-21	12.80	3.8	3.00	5.99	↓ -1.4bps	122.47	6.003	6.065	122.26	122.49	15-Sep-17	122.20	41.47	1
FR0053	8-Jul-10	15-Jul-21	8.25	3.8	3.24	6.06	↓ -1.0bps	107.38	5.965	6.112	107.19	107.71	15-Sep-17	107.50	250.87	6
<b>FR0061</b>	<b>6-Oct-11</b>	<b>15-May-22</b>	<b>7.00</b>	<b>4.7</b>	<b>3.87</b>	<b>6.05</b>	<b>↓ -0.2bps</b>	<b>103.80</b>	<b>5.987</b>	<b>6.089</b>	<b>103.64</b>	<b>104.06</b>	<b>15-Sep-17</b>	<b>103.95</b>	<b>583.36</b>	<b>21</b>
FR0035	16-Feb-06	15-Jun-22	12.90	4.8	3.62	6.18	↓ -1.6bps	127.23	6.110	6.220	127.08	127.60	24-Aug-17	110.05	35.50	3
FR0043	22-Feb-07	15-Jul-22	10.25	4.8	3.83	6.20	↓ -1.1bps	116.64	6.141	6.231	116.53	116.94	15-Sep-17	116.51	4.00	1
FR0063	13-Aug-12	15-May-23	5.63	5.7	4.68	6.29	↓ -2.1bps	96.88	6.259	6.359	96.54	97.00	15-Sep-17	97.14	594.54	7
FR0046	19-Jul-07	15-Jul-23	9.50	5.8	4.50	6.35	↑ 2.7bps	115.14	6.269	6.442	114.66	115.57	15-Sep-17	115.31	18.00	1
FR0039	24-Aug-06	15-Aug-23	11.75	5.9	4.43	6.35	↓ -3.0bps	126.23	6.349	6.436	125.79	126.28	14-Jul-17	123.25	20.95	1
FR0070	29-Aug-13	15-Mar-24	8.38	6.5	5.05	6.46	↑ 1.7bps	110.01	6.367	6.495	109.84	110.55	15-Sep-17	111.00	795.29	29
FR0044	19-Apr-07	15-Sep-24	10.00	7.0	5.20	6.51	↑ 0.2bps	119.36	6.435	6.628	118.64	119.84	15-Sep-17	119.25	0.35	1
FR0040	21-Sep-06	15-Sep-25	11.00	8.0	5.64	6.54	↓ -2.4bps	127.45	6.521	6.634	126.77	127.58	12-Sep-17	124.25	0.70	1
FR0037	18-May-06	15-Sep-26	12.00	9.0	6.03	6.60	↓ -0.6bps	136.22	6.573	6.689	135.48	136.43	24-Aug-17	133.00	5.00	1
FR0056	23-Sep-10	15-Sep-26	8.38	9.0	6.44	6.56	↓ -1.2bps	112.21	6.490	6.690	111.26	112.70	15-Sep-17	112.00	1,295.00	14
<b>FR0059</b>	<b>15-Sep-11</b>	<b>15-May-27</b>	<b>7.00</b>	<b>9.7</b>	<b>6.85</b>	<b>6.50</b>	<b>↓ -0.7bps</b>	<b>103.55</b>	<b>6.412</b>	<b>6.549</b>	<b>103.18</b>	<b>104.18</b>	<b>15-Sep-17</b>	<b>103.79</b>	<b>1,598.88</b>	<b>96</b>
FR0042	25-Jan-07	15-Jul-27	10.25	9.8	6.50	6.70	↓ -3.1bps	125.27	6.676	6.768	124.69	125.45	7-Sep-17	121.72	17.00	7
FR0047	30-Aug-07	15-Feb-28	10.00	10.4	6.83	6.72	→ 0.0bps	124.31	6.697	6.842	123.24	124.48	13-Sep-17	122.80	0.47	2
FR0064	13-Aug-12	15-May-28	6.13	10.7	7.48	6.81	↓ -1.3bps	94.84	6.720	6.842	94.62	95.51	15-Sep-17	94.50	3.20	1
FR0071	12-Sep-13	15-Mar-29	9.00	11.5	7.46	6.92	↑ 1.2bps	116.31	6.774	6.945	116.09	117.59	15-Sep-17	115.15	97.30	12
FR0052	20-Aug-09	15-Aug-30	10.50	12.9	7.71	7.01	↑ 1.1bps	129.31	6.958	7.096	128.46	129.85	13-Sep-17	130.00	1.38	2
FR0073	6-Aug-15	15-May-31	8.75	13.7	8.12	7.00	↑ 0.2bps	115.18	6.866	7.018	115.05	116.51	15-Sep-17	115.85	141.60	9
<b>FR0074</b>	<b>10-Nov-16</b>	<b>15-Aug-32</b>	<b>7.50</b>	<b>14.9</b>	<b>8.98</b>	<b>7.01</b>	<b>↓ -3.5bps</b>	<b>104.52</b>	<b>6.835</b>	<b>7.045</b>	<b>104.15</b>	<b>106.15</b>	<b>15-Sep-17</b>	<b>105.25</b>	<b>780.27</b>	<b>40</b>
FR0054	22-Jul-10	15-Jul-31	9.50	13.8	8.12	7.10	↓ -1.6bps	120.88	7.006	7.162	120.29	121.85	13-Sep-17	120.00	0.94	4
FR0058	21-Jul-11	15-Jun-32	8.25	14.8	8.61	7.13	↓ -2.3bps	110.08	7.036	7.170	109.71	111.01	15-Sep-17	108.45	17.26	9
FR0065	30-Aug-12	15-May-33	6.63	15.7	9.26	7.19	↑ 1.1bps	94.76	7.081	7.202	94.62	95.71	15-Sep-17	93.60	7.51	11
FR0068	1-Aug-13	15-Mar-34	8.38	16.5	9.24	7.31	↑ 0.5bps	110.14	7.073	7.300	110.22	112.56	15-Sep-17	110.12	436.49	25
<b>FR0072</b>	<b>9-Jul-15</b>	<b>15-May-36</b>	<b>8.25</b>	<b>18.7</b>	<b>9.64</b>	<b>7.25</b>	<b>↑ 0.3bps</b>	<b>110.10</b>	<b>7.004</b>	<b>7.267</b>	<b>109.94</b>	<b>112.85</b>	<b>15-Sep-17</b>	<b>109.50</b>	<b>415.66</b>	<b>37</b>
FR0045	24-May-07	15-May-37	9.75	19.7	9.52	7.35	↑ 0.5bps	124.76	7.281	7.390	124.24	125.59	13-Sep-17	125.75	0.20	1
FR0050	24-Jan-08	15-Jul-38	10.50	20.8	9.77	7.36	↑ 1.2bps	133.18	7.274	7.514	131.17	134.31	14-Sep-17	132.00	1.14	2
FR0057	21-Apr-11	15-May-41	9.50	23.7	10.38	7.35	→ 0.0bps	123.95	7.325	7.518	121.75	124.26	13-Sep-17	124.00	47.76	12
FR0062	9-Feb-12	15-Apr-42	6.38	24.6	11.21	7.44	↑ 4.0bps	88.07	7.378	7.472	87.73	88.69	15-Sep-17	89.20	199.74	18
FR0067	18-Jul-13	15-Feb-44	8.75	26.4	11.09	7.46	↑ 1.5bps	114.75	7.415	7.640	112.51	115.36	14-Sep-17	114.70	108.93	35
ORI011	22-Oct-14	15-Oct-17	8.50	0.1	-	2.80	↓ -14.4bps	100.41	3.421	3.934	100.38	100.42	15-Sep-17	99.80	16.21	8
ORI012	21-Oct-15	15-Oct-18	9.00	1.1	-	5.49	↑ 0.7bps	103.64	5.398	5.598	103.57	103.78	15-Sep-17	102.75	7.68	19
ORI013	26-Oct-16	15-Oct-19	6.60	2.1	-	5.96	↓ -0.7bps	101.25	5.894	6.040	101.09	101.38	15-Sep-17	100.60	124.88	65
IFR0002	26-Aug-08	15-Aug-18	11.95	0.9	0.87	3.45	↓ -2.4bps	107.50	3.452	3.666	107.39	107.59	28-Aug-17	103.95	2.00	2
IFR0008	15-Apr-10	15-Mar-20	8.80	2.5	2.22	7.35	↓ -0.1bps	103.25	6.885	7.399	103.14	104.33	5-May-14	103.65	5.00	3
IFR0007	1-Apr-10	15-Jan-25	10.25	7.3	5.19	7.67	↓ -0.1bps	114.25	7.249	7.763	113.69	116.82	17-Jun-16	115.12	25.00	1
IFR0006	21-Jan-10	15-Mar-30	10.25	12.5	7.41	8.12	→ 0.0bps	116.50	7.710	8.223	115.64	120.15	15-Sep-17	121.25	28.00	5
IFR0010	3-Mar-11	15-Feb-36	10.00	18.4	9.27	7.57	↑ 1.9bps	123.94	7.459	7.973	119.39	125.21	23-Aug-17	120.00	1.01	1
PBS001	16-Feb-12	15-Feb-18	4.50	0.4	0.40	8.24	↑ 2.4bps	98.50	7.393	7.907	98.62	98.82	15-Mar-17	97.65	19.14	6
PBS002	2-Feb-12	15-Jan-22	5.45	4.3	3.71	7.95	↑ 0.1bps	91.00	6.562	7.076	94.01	95.85	11-Jul-17	93.70	50.00	1
PBS003	2-Feb-12	15-Jan-27	6.00	9.3	6.86	7.11	↑ 0.1bps	92.50	6.855	7.200	91.93	94.16	23-Aug-17	90.80	10.00	3
PBS004	16-Feb-12	15-Feb-37	6.10	19.4	10.10	8.36	→ 0.0bps	78.50	7.498	8.012	81.32	85.81	14-Sep-17	85.85	7.00	3
PBS005	2-May-13	15-Apr-43	6.75	25.6	10.97	7.78	→ 0.0bps	88.65	7.480	7.993	86.53	91.73	31-Aug-17	86.05	4.00	2
PBS006	19-Sep-13	15-Sep-20	8.25	3.0	2.65	6.08	↓ -2.5bps	105.84	6.065	6.222	105.47	105.91	15-Sep-17	105.50	72.00	5
PBS009	30-Jul-15	25-Jan-18	7.75	0.4	0.35	4.83	↓ -5.4bps	100.98	4.789	5.017	100.94	101.03	15-Sep-17	101.09	300.00	1
PBS011	14-Jan-16	15-Aug-23	8.75	5.9	4.59	7.24	↑ 3.0bps	107.15	6.752	7.266	107.03	109.60	15-Sep-17	110.10	334.00	2
PBS012	28-Jan-16	15-Nov-31	8.88	14.2	8.17	7.38	↓ -0.4bps	112.95	7.349	7.609	110.84	113.27	15-Sep-17	112.40	25.00	5
PBS013	6-Oct-16	15-May-19	6.25	1.7	1.53	5.97	↑ 1.6bps	100.43	5.985	6.280	99.94	100.40	15-Sep-17	100.37	1,053.00	11
PBS014	6-Oct-16	15-May-21	6.50	3.7	3.15	6.32	↑ 2.6bps	100.57	6.437	6.951	98.55	100.19	15-Sep-17	100.63	1,056.00	8
SR007	11-Mar-15	11-Mar-18	8.25	0.5	-	4.58	↑ 0.2bps	101.73	4.589	5.103	101.52	101.77	15-Sep-17	101.25	1.25	6
SR008	10-Mar-16	10-Mar-19	8.30	1.5	-	5.84	↓ -0.5bps	103.47	5.800	5.926	103.37	103.55	15-Sep-17	102.85	166.61	22
SR009	22-Mar-17	10-Mar-20	6.90	2.5	2.16	6.07	↓ -4.1bps	101.91	5.994	6.194	101.53	101.98	15-Sep-17	101.30	70.33	47

\*Val: Valuation based on ENSS Yield Curve; MDur (Modified Duration) is in year; Coupon, Price, & Yield are in %

Source: Bloomberg, Danareksa Sekuritas, IDX (Last Trade)

YIELD CURVE MOVEMENT

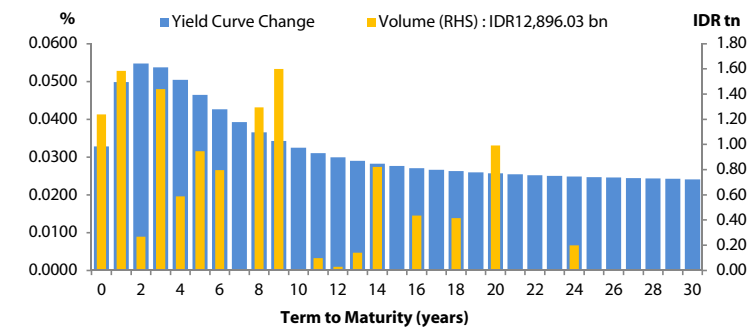


Source: Danareksa Sekuritas

Analysts: Rifki Rizal (ext. 3404) & Amir A. Dalimunthe (ext. 3405)

**Disclaimer:** The information contained in this report has been taken from sources which we deem reliable. However, none of P.T. Danareksa Sekuritas and/or its affiliated companies and/or their respective employees and/or agents makes any representation or warranty (express or implied) or accepts any responsibility or liability as to, or in relation to, the accuracy, completeness of the information and opinions contained in this report or as to any information contained in this report or any other such information or opinions remaining unchanged after the issue thereof. We expressly disclaim any responsibility or liability (express or implied) of P.T. Danareksa Sekuritas, its affiliated companies and their respective employees and agents whatsoever and howsoever arising (including, without limitation for any claims, proceedings, action, suits, losses, expenses, damages or costs) which may be brought against or suffered by any person as a result of acting in reliance upon the whole or any part of the contents of this report and neither P.T. Danareksa Sekuritas, its affiliated companies or their respective employees or agents accept liability for any errors, omissions or mis-statements, negligent or otherwise, in the report and any liability in respect of the report or any inaccuracy therein or omission therefrom which might otherwise arise is hereby expressly disclaimed. The information contained in this report is not to be taken as any recommendation made by P.T. Danareksa Sekuritas or any other person to enter into any agreement with regard to any investment mentioned in this document. This report is prepared for general circulation. It does not have regards to the specific person who may receive this report. In considering any investments you should make your own independent assessment and seek your own professional financial and legal advice.

YIELD CURVE CHANGE & GOVERNMENT BONDS TRADE VOLUME BY MATURITY



Source: Danareksa Sekuritas & IDX